

Advanced Modeling Techniques for Predicting and Enhancing Drilling Performance: A Comprehensive Review

Yogesh dinkar Jadhav¹, Dr. A P Pandhare²

¹PhD scholar, Department of Mechanical Engineering, Sinhgad college of engineering and Assistant Professor, NBN Sinhgad Technical Institutes Campus, Pune, Maharashtra -411046, India. sittpo3@gmail.com

²Department of mechanical engineering, professor, Sinhgad college of engineering (scoe), vadgaon bk, pune, Maharashtra-411041, India. appandhare@sinhgad.edu

Article History:

Received: 29-05-2024

Revised: 11-07-2024

Accepted: 29-06-2024

Abstract:

Drilling activities within the oil and gas trade have changed a lot in recent a long time. This can be since the industry ought to be more proficient, secure, and cost-effective. This in-depth ponder looks at the most recent modeling strategies that have been created to move forward the execution of burrowing. These strategies utilize progressed innovations like machine learning, information analytics, and physics-based models to figure and move forward distinctive parts of the penetrating handle. By combining real-time information with past records, these models can anticipate boring comes about with a level of precision that has never been seen some time recently. This lets supervisors make choices that decrease hazard and boost working productivity. The survey isolates modeling strategies into three bunches: data-driven models, blended models, and mechanical models. Each has its claim aces and cons. Individuals like data-driven models like neural systems and relapse investigation since they can discover complicated patterns in enormous sets of information. Machine learning and standard physics-based strategies are both utilized in half breed models to allow a reasonable see that incorporates both real-world and hypothesis thoughts. Unthinking models, which are based on physical rules, provide us a clear picture of how things move underground and are fundamental for arranging how to bore. This paper also talks approximately the issues that come with utilizing these progressed strategies, such as poor information quality, restricted computing power, and the require for subject information to accurately get it show comes about. What it moreover does is appear how future enhancements in sensor innovation and computer control may make models indeed superior. This survey gives a full picture of the display and potential future of progressed modeling methods. Its objective is to assist researchers and experts within the field find better approaches to move forward boring execution, which is able eventually, lead to the long-term development of vitality assets.

Keywords: Drilling Performance Optimization, Machine Learning in Drilling, Data-Driven Models, Hybrid Modeling Techniques, Subsurface Dynamics Simulation

I. Introduction

The oil and gas business has been an important part of the world economy for a long time, giving the resources that modern societies need to run. As the need for energy keeps going up, drilling activities need to be improved to be more efficient, save money, and have less of an effect on the earth. To deal with these problems, new modeling methods have become useful for guessing how well drilling will work and making it better. Diverse strategies are utilized in these procedures, such as data-

driven models, machine learning calculations, and physics-based simulation [1]. Each one gives diverse data almost how complicated boring forms are. The quick development of innovation and the gigantic sum of information accessible have opened up better approaches to move forward burrowing operations. Boring has customarily been a labour-intensive prepare that depended on involvement and trial-and-error. In any case, the utilize of computerized apparatuses and the expansion of screens and information analytics to burrowing exercises have changed this. Nowadays, penetrating engineers can utilize the colossal sums of information they collect from boring destinations to create complex models that precisely recreate boring conditions and foresee what will happen. These models offer assistance labourers make keen choices that make strides execution and security by giving them a part of data approximately things like bit wear, penetrating liquid elements, rate of passage, and underground geography. Out of all the modeling strategies, machine learning has appeared itself to be the foremost guarantee for making strides penetrating proficiency. By utilizing ancient burrowing information to prepare their calculations, machine learning models can discover complex designs and associations that people might not see at to begin with look [2]. These models are exceptionally great at foreseeing key victory measures like bit life and rate of section. They can indeed anticipate issues that might happen, like hardware breaking down or a pipe getting stuck. In expansion, including real-time information to these models lets them alter with the times, giving labourers the foremost up-to-date data they ought to make choices right absent [3].

A reasonable see of boring operations can be picked up from both data-driven models and blended modeling methods that combine machine learning with standard physics-based approaches. These models take into consideration both real-world information and hypothetical thoughts. They appear both what has been seen and the physical rules that control penetrating forms. Half breed models are particularly accommodating for figuring out complicated things like how boring liquids and underground rocks combine, which can have a enormous impact on how well and securely the boring is worn. Out boring optimization, unthinking models that are based on material science concepts are still exceptionally imperative. These models give us a full picture of how the ground works and are essential for arranging effective burrowing plans. Unthinking models offer assistance engineers discover the most excellent penetrating settings and foresee issues by modeling how the bore string, bit, and penetrating liquid will respond to distinctive circumstances [4]. Making sure that the data gathered from digging places is correct is important for creating strong models that can handle the difficulties of real-world operations [5]. It also takes a lot of computing power and knowledge in both data science and drilling engineering to put advanced models into action. It is important to bring these fields together so that we can make models that are not only scientifically good but also useful in the real world. New developments in monitoring technology, data analytics, and computing power will likely lead to even more progress in the future of drilling optimization. As the business world becomes more computerized and data-driven, using advanced modeling methods will become more and more important. The oil and gas business can make big steps forward in efficiency, safety, and sustainability by using these models to their full potential. This will eventually lead to the responsible growth of energy supplies.

II. Background

Over the past few decades, the oil and gas trade has made a part of logical advance. Typically since of the growing require for vitality and the ought to get resources out of the ground more efficiently. Improving the execution of boring has been one of the most objectives, because it may be a key way to cut down on running costs and natural harm. Within the past, boring operations depended a part on common sense data and tried-and-true strategies, which frequently driven to destitute comes about and issues that were not anticipated. But since more progressed modeling strategies came out, the industry has changed its center to ways that are based on information and recreations [6, 7]. Data-driven models have gotten to be an imperative portion of making burrowing forms superior. Expansive datasets accumulated from burrowing operations are utilized by these models to discover patterns and associations that are difficult to see with conventional strategies. A part of work has been done utilizing machine learning strategies like neural systems, bolster vector machines, and choice trees to figure imperative penetrating components like rate of passage, torque, and drag [8, 9]. Analysts have been able to form models that can accurately foresee how well penetrating will work, discover conceivable dangers, and move forward working components in genuine time by preparing these calculations on old data [10]. Machine learning has appeared a parcel of potential when used in penetrating. Thinks about have appeared that it can make strides boring execution and cut down on time went through not doing anything [11].

One of the best things almost data-driven models is that they can alter as things happen. As the boring handle goes on, sensors built into the penetrating apparatuses send real-time information streams that keep track of execution measures and climate components. This colossal sum of information lets machine learning models alter their forecasts on the fly, giving specialists valuable data that can offer assistance them make choices [12]. Including real-time information analytics to penetrating operations could be a huge step forward for the trade since it makes drilling tactics more speedy and adaptable [13]. Within the past few a long time, crossover modeling frameworks that utilize both data-driven strategies and physics-based models have moreover ended up more prevalent. These models utilize both real-world information and hypothetical thoughts to clarify both what is being noticed and what is truly going on physically [14]. By utilizing the finest parts of both approaches, crossover models deliver us a full picture of complicated penetrating forms. For case, they can demonstrate how penetrating liquids connected with rock layers underneath the surface, which may be a key portion of finding the leading cosmetics and stream rates for boring liquids [15]. It has been appeared that crossover models can make forecasts more exact and boring strategies more solid. This makes them valuable apparatuses for boring engineers [16]. In arrange to progress penetrating execution, unthinking models, which are based on physical laws, are still exceptionally vital. These models grant us a part of data almost how the ground moves and are necessary for making great boring plans [17]. Unthinking models can duplicate how the bore string, bit, and penetrating liquid act totally different circumstances. This lets engineers see at diverse conceivable outcomes and alter the boring settings as required. More powerful computers and superior modeling apparatuses have made it conceivable to form complex atomic models that precisely appear how boring works [18]. A part of issues come up after you attempt to utilize progressed modeling strategies in drills. Concerns about data quality and access still exist, since the accuracy and

dependability of models depend a lot on the quality of the data that goes into them [19]. When data is missing or confusing, it can cause predictions to be wrong and decisions to not be the best they could be. Strong data management and the use of advanced data cleaning and preparation methods [20] are needed to make sure that the data is accurate. This is also because using advanced models needs a lot of computing power and knowledge in both data science and drilling engineering. This requirement from a different field shows how important it is for data scientists and drilling experts to work together to create useful solutions [21]. Even with these problems, the future of drilling optimization looks bright because monitoring technology, data analytics, and computers are getting better all the time. Adding the Internet of Things (IoT) and edge computing to drilling operations should improve data collection and processing even more, giving model developers even more data to work with [22]. As the business world becomes more computerized and data-driven, advanced modeling methods will become more important for making big changes in safety, efficiency, and environmental friendliness [23].

Table 1: Summary of the different modeling techniques applied in drilling performance

Method	Application	Data Type	Limitations	Future Prospects
Neural Networks [11]	Rate of Penetration Prediction	Historical Drilling Data	Requires large datasets	Integration with real-time data
Regression Models	Torque and Drag Estimation [23]	Sensor Data	Limited to linear relationships	Development of nonlinear regression models
Decision Trees	Equipment Failure Prediction [24]	Maintenance Records	Prone to overfitting	Implementation of ensemble techniques
Support Vector Machines [12]	Drilling Fluid Optimization	Lab Experiment Data	Computationally intensive	Use of kernel optimization to improve efficiency
Hybrid Models	Formation Evaluation [25]	Combined Data Sources	Complex integration required	Exploration of more flexible hybrid frameworks
Finite Element Analysis	Drill String Dynamics [26]	Simulation Data	High computational cost	Enhanced algorithms for faster simulations
Bayesian Networks	Stuck Pipe Prediction [27]	Historical and Real-Time Data	Sensitivity to data quality	Integration with real-time data streams
Random Forest	Bit Wear Prediction	Historical Drilling Data	Requires parameter tuning	Automation of parameter selection
Genetic Algorithms	Drilling Path Optimization [28]	Geological Models	Computationally expensive	Parallel computing to reduce processing time
Monte Carlo Simulations	Risk Assessment	Probabilistic Data	Requires extensive computation	Improved sampling techniques for

				efficiency
Deep Learning	Subsurface Imaging	Seismic Data	High computational demand	Utilization of cloud-based computing resources
Particle Swarm Optimization	Parameter Tuning	Simulation Data	May converge to local optima	Hybridization with other optimization methods
K-Means Clustering	Lithology Classification	Well Log Data	Limited to predefined clusters	Dynamic clustering techniques for improved accuracy
Fuzzy Logic	Drilling Performance Evaluation	Expert Knowledge	Subjective nature of fuzzy rules	Development of more objective fuzzy systems

III. Evolution of Drilling Techniques

The advancement of penetrating strategies has been stamped by critical progressions driven by mechanical advancement and the require for more noteworthy effectiveness and security. Customarily, penetrating depended on manual, experimental strategies that frequently driven to wasteful aspects and eccentric comes about. With the coming of advanced advances, the industry has transitioned towards more data-driven and computerized approaches. The integration of sensors and real-time information analytics has changed penetrating operations, empowering administrators to screen conditions and optimize forms powerfully, overview of flowchart shown in figure 1. Progressed modeling procedures, such as machine learning and simulation-based strategies, have assist upgraded the capacity to foresee penetrating results and make strides execution. These developments have not as it were expanded productivity and diminished costs but too progressed security and natural maintainability in boring operations.

A. Traditional Drilling Methods

Traditional digging methods, which involve doing things by hand and relying on what you know from experience, have been the backbone of the oil and gas business for decades. Rotary drilling, in which a drill bit is turned to cut through the earth's layers, was usually used for these ways. Drilling mud is pumped down the drill pipe to cool the bit and bring pieces back to the surface. The drill string is made up of several parts that are all linked to each other. Even though this method set the foundations for modern drills, it was limited by the fact that it relied on empirical methods and did not allow for real-time data analysis. Decisions were often based on what the drilling crew knew, which meant they could be wrong or vary from person to person [17]. One big problem with standard methods is that they can not properly predict what will happen below the surface. A lot of the time, operators had to depend on geological studies and old data, which could be wrong or out of date. This made digging less efficient and led to problems that were not expected. Because managers had to change their plans on the spot when unexpected rock formations or machine problems happened, this uncertainty led to more time spent not working and higher running costs. Also, because these

methods were based on experience, it was hard to find the best drilling factors, like the bit is weight and spinning speed, which are necessary to improve drilling efficiency and bit life.

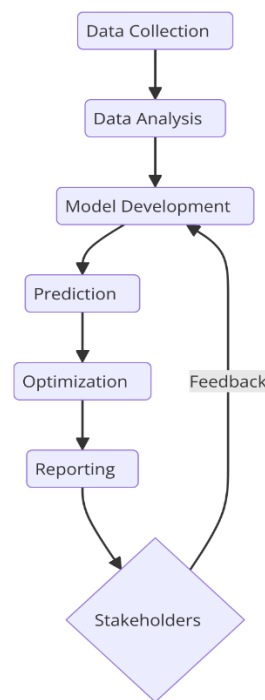


Figure 1: Representation of modeling techniques for predicting and enhancing drilling performance

Another big problem was that standard drilling methods often involve trying things out and seeing what works and what doesn't. With this method, changes were made to the drilling settings without fully knowing how they would affect the overall performance. This could have led to less-than-ideal results and safety risks [21]. For example, wellbore instability, lost circulation, or even blowouts could happen if the mud is not moving around enough. Not being able to successfully watch and control digging conditions in real time created major safety and environmental risks, such as the chance of oil spills and other damage to the environment. The problems with old ways of doing things became clearer as the need for energy supplies increased and research moved into tougher areas. For safer and more efficient digging, more advanced technologies were needed for deeper wells and more complicated rock formations. This need for more accuracy and efficiency is what led to the creation of digital technologies and methods that are based on data that are used in modern drills. The industry has changed a lot since human tasks were replaced with computerized ones and real-time data analytics were added. This has made drilling operations more efficient and environmentally friendly. As drilling technology has improved, workers can better understand what is below the ground, use the best drilling settings, and leave less of an impact on the environment. This is a big step forward from the way things were done in the past.

1. Rotary Drilling

One very common old method is rotary drilling, which uses a drill bit that spins to cut through the earth's layers. The surface's spinning force is sent to the bit by the drill string, which is made up of

several lines that are linked to each other. More drilling mud is pumped down the pipe to cool the bit and move the bits to the top, process shown in figure 2.

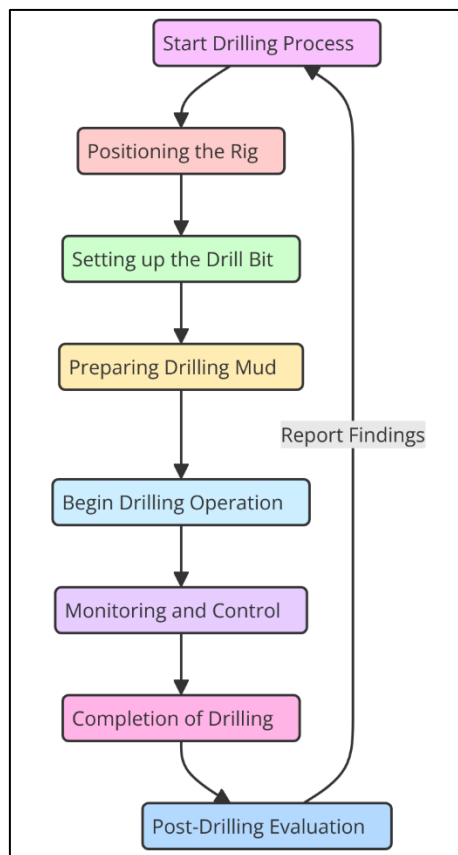


Figure 2: Overview of rotary drilling process

This approach has been the standard in the field for a long time, but it has some problems because it relies on actual information and human changes [24]. Most of the time, decisions about drilling factors like bit weight and spinning speed were made without using data or experience. This made the process less efficient and raised the risk of accidents. Rotary drilling is still an important part of drilling processes, even with these problems.

2. Cable Tool Drilling

One of the oldest ways to drill is with a cable tool that lifts and drops a heavy drill bit into the wellbore over and over, breaking up rock forms. Modern methods are faster and more effective than this percussion method, but it is easy to use and works well for small wells and some natural situations, shown in figure 3. It costs less and does not need as much tools, so it can be used for small jobs or places where rotor drilling might not be possible. However, it cannot go very deep because it does not have continuous spinning, and making changes by hand can make drilling processes less accurate and less efficient, showing the need for more advanced technologies [22].

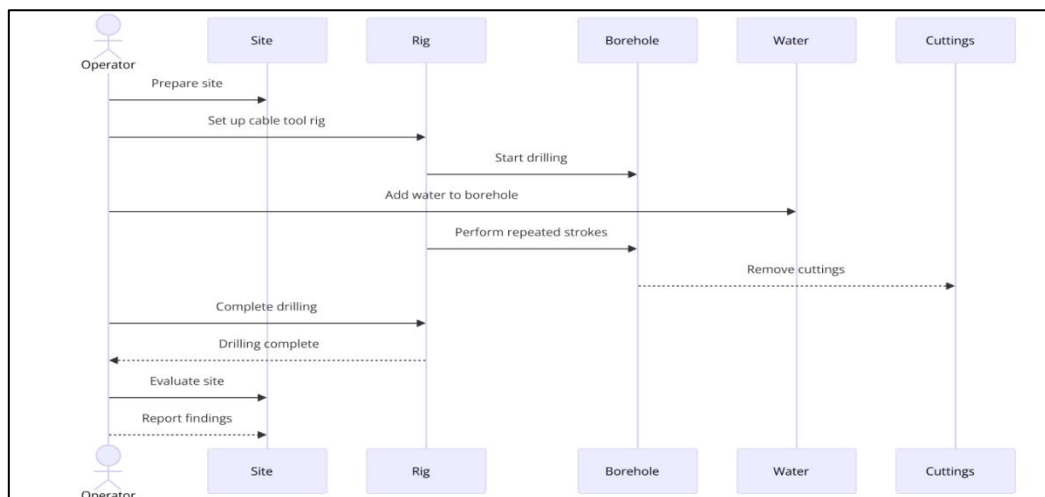


Figure 3: Representation of steps involved in the cable tool drilling method

3. Auger Drilling

A spiral screw is used in auger drilling to take material from the ground. This method is often used for earth studies and small drilling tasks. This method works for soft, unconsolidated materials and makes drilling go quickly and sample return easy. Speed and cheap cost are important in environmental and geotechnical studies, which is why auger drilling is often used. It can only be used at short depths and in soft soils, though, because it has trouble with hard rock formations [9]. Because it cannot handle complicated physical conditions and can only go so deep, auger drilling is not good for deeper, more difficult projects. This shows how important it is to use more advanced drilling methods in these cases.

B. Transition to Digital and Data-Driven Techniques

The oil and gas business has changed a lot since digital technologies were used in digging. This is a big change from the old ways of doing things. This change happened because of the need for better safety, speed, and cost-effectiveness in digging settings that are getting more complicated. Digital technologies have made a lot of new things possible, like advanced tracking systems and real-time data analytics. These have completely changed how drilling operations are run and controlled. Putting in place real-time tracking tools is a key part of this digital change. These systems use sensors built into drilling tools to constantly gather information about things like temperature, sound, and pressure [27]. This information is sent to computers on the surface, where it is studied to give real-time information about the digging circumstances. Real-time monitoring of operations lets workers make quick, well-informed decisions about how to best set up drilling settings to improve performance and avoid problems like equipment failures or wellbore instability. This feature cuts down on time spent doing nothing and boosts total efficiency.

In this digital age, data analytics is very important because it lets us handle and make sense of the huge amounts of data that are collected during digging. Machine learning algorithms and advanced analytics tools are used to find trends and connections in the data. This gives us new insights that we couldn't get with older methods. For case, prescient analytics can foresee how burrowing will go by utilizing both past and real-time information. This lets labourers arrange ahead for issues and make

changes to their methodologies some time recently they happen. This strategy based on information makes penetrating forms more exact and solid, which brings down dangers and raises security. Boring has moreover gotten to be more computerized and can be controlled from a remote place much obliged to computerized innovations. Mechanized boring frameworks can do complicated employments with small offer assistance from individuals, which boost speed and brings down the chance of botches. With advanced information utilized for heading and back, inaccessible operation center let specialists keep an eye on numerous penetrating ventures from one put. This not as it were moves forward working effectiveness, but it moreover makes things more secure by cutting down on the number of individuals who got to be in unsafe places.

1. Impact of real-time data collection and analysis on drilling performance

The collecting and think about of real-time information has had a colossal impact on the victory of boring, totally changing how exercises are run and controlled. This modern innovation has brought exactness, speed, and security to the oil and gas commerce to levels that have never been seen some time recently. It also lets workers adapt quickly to changing conditions in digging sites. For real-time data collection to work, sensors built into the drilling tools must constantly check the drilling settings. These sensors record a lot of information, like pressure, temperature, sound, and torque, so you can see the whole drilling process as it happens. Because this information is available right away, workers can make quick choices based on well-researched facts. For example, they can change the weight on the bit and the speed of spinning to get the best results while reducing equipment wear [13].

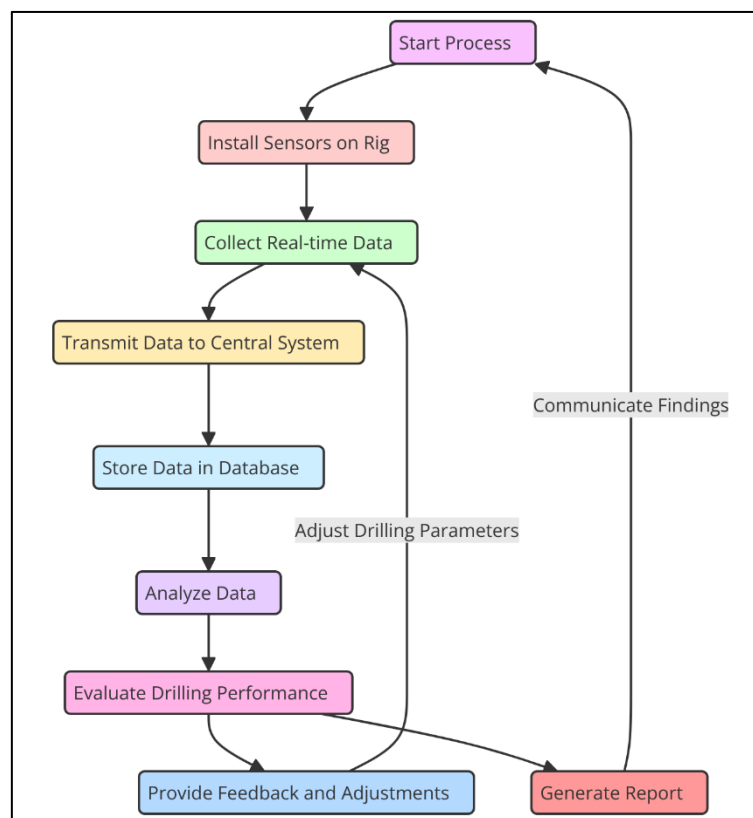


Figure 4: Overview of real-time data collection and analysis

Modern analytics tools and machine learning algorithms make it easier to look at real-time data. These tools process the data to find trends and outliers. This feature is very important for predictive maintenance because it lets you find problems with equipment or bad conditions before they get worse and cause expensive downtimes or safety issues. By predicting possible problems before they happen, workers can take steps to avoid them, like changing their drilling methods or planning repairs, represent it in figure 4. Real-time data analysis also improves safety by giving instant feedback on the conditions of the digging. This feedback can let workers know about possible dangers, like rocks that are too pressured or wellbore conditions that aren't stable, so they can quickly fix the problem and lower the risk. Being able to see and act on these situations in real time makes accidents and environmental problems much less likely, which encourages better and more responsible digging. Real-time data gathering and analysis are built in, which also makes it possible to operate from afar. Digital technologies allow operators to keep an eye on multiple projects at once from centralized control centers where they can watch digging operations. This online supervision not only makes operations run more smoothly, but it also cuts down on the need for people to be in possibly dangerous places.

Table 2: Summary of real-time data collection and analysis on drilling performance

Aspect	Parameter	Impact
Operational Efficiency	Improved Efficiency	Real-time data allows for dynamic adjustments in drilling parameters, reducing non-productive time and enhancing overall performance.
Safety	Enhanced Safety	Immediate feedback on drilling conditions helps mitigate risks and prevent accidents, promoting safer operations.
Cost Management	Cost Reduction	Early detection of issues through predictive analytics reduces downtime and maintenance costs, optimizing resource utilization.
Data Quality	Data Accuracy	Continuous monitoring ensures high data accuracy, providing reliable inputs for analysis and decision-making.
Decision-Making	Informed Decisions	Real-time insights enable operators to make quick, data-driven decisions, optimizing drilling strategies and outcomes.
Predictive Maintenance	Equipment Longevity	Predictive analytics identify potential equipment failures, allowing for timely maintenance and reducing wear and tear.
Environmental Impact	Reduced Impact	Monitoring and controlling drilling parameters help minimize environmental risks, such as spills and emissions.
Remote Operations	Centralized Oversight	Real-time data supports remote monitoring and control, improving efficiency and reducing the need for on-site personnel.
Risk Management	Proactive Risk Mitigation	Continuous data analysis allows for early identification of potential hazards, enabling preemptive actions to manage

		risks.
Innovation	Technological Advancement	Integration of real-time data drives technological innovation, paving the way for more advanced and sustainable drilling techniques.

IV. Advanced Modeling Techniques

A. Data-Driven Models

The oil and gas business has changed a lot about how they do digging operations since data-driven models came out. The machine learning methods in these models are used to look at and make sense of the huge amounts of data that come from digging. Operators can improve digging processes, make them more efficient, and cut costs by using the trends and ideas they can get from this data. Neural networks, regression models, and decision trees are some of the most important machine learning methods used in this field. Each has its own benefits and uses in modeling complex drilling processes.

1. Describes the machine learning algorithms that are used in drilling

Machine learning strategies are presently an imperative portion of cutting edge drills since they can handle enormous datasets and discover complex associations between components. Neural systems are one of the foremost prevalent ways to utilize machine learning. They are made to work and see just like the human brain. They are made up of layers of hubs, or neurons, that are connected to each other and prepare and alter crude information into yield information. In penetrating, neural systems are exceptionally great at figuring out the complicated designs and nonlinear connections that are common within the ground and the boring parameters. This makes them culminate for speculating things just like the rate of entrance (ROP), bit wear, and arrangement highlights, which makes a difference make expectations and choices that are more exact. In data-driven penetrating investigation, relapse models are very imperative. There are both straight and nonlinear sorts of relapse models. With direct relapse models, you'll be able effectively figure what will happen by looking at past information and figuring out how the free and subordinate components are related. On the other hand, nonlinear relapse models can appear how factors combine in more complicated ways, which gives them more adaptability and precision in their gauges. A part of individuals utilize these models to figure constrain, drag, and other vital components, which lets specialists alter their penetrating plans ahead of time. Choice trees are another adaptable type of machine learning that's utilized in penetrating. These models make a structure of choices that looks like a tree. Each node could be a choice point based on a diverse variable that leads to an anticipated result. Choice trees are valuable since they are simple to get it and utilize. This makes them good for assignments like figuring out what conditions are underneath ground and assessing conceivable risks. Decision trees offer assistance labourers discover the finest penetrating settings and diminish dangers by giving them a clear and sensible way to create choices [20].

2. Applications in Predicting Drilling

The utilize of machine learning strategies to figure imperative penetrating components has changed the way specialists run boring operations. The rate of infiltration (ROP), which appears how quick

the penetrate bit moves through the shake, is one of the foremost important factors in drilling. To induce the finest boring comes about and the slightest sum of downtime, it's critical to accurately foresee ROP. Since neural systems can depict complex connections between components, they are frequently utilized to anticipate ROP based on bits' weight, the speed of turn, and the features of the arrangement. Real-time ROP expectations let specialists alter the settings of the penetrate to induce the foremost out of it and keep devices from wearing out. Two other vital components that have a huge impact on penetrating ability are torque and drag. Drag is the weight that the penetrate string faces because it goes through the wellbore. Torque is the turning force that's required to turn the penetrate string. For adjusting the weight on the bit, the turning speed, and the qualities of the penetrating liquid, it is essential to form precise gauges of torque and drag. This makes beyond any doubt that the penetrating operations go easily and rapidly. Both direct and nonlinear relapse models are frequently utilized to figure torque and drag from past information and instrument inputs in genuine time. These expectations offer assistance specialists arrange for conceivable issues, like a pipe getting stuck or as well much wear, and make the changes that are needed to avoid costly downtime and harm to gear.

Machine learning methods are being utilized increasingly to combine information from diverse sources and allow a full picture of boring exercises, in expansion to foreseeing person variables. Data-driven models can discover patterns and associations that offer assistance with making choices and coming up with strategies by looking at information from cameras, logs, and geographic thinks about. With this all-around strategy, specialists can way better move forward the penetrating handle, which raises add up to execution and brings down costs.

3. Case Studies Demonstrating the Effectiveness of Data-Driven Models

A few case ponders appear how data-driven models can be utilized to progress execution and make penetrating operations more proficient. In one consider, an oil and gas commerce utilized a neural arrange demonstrate to figure the rate of entrance (ROP) by looking at information from past drills and instrument inputs in genuine time. The show was exceptionally precise, which let the company discover the leading penetrating settings and cut down on squandered time by an expansive sum. By utilizing the neural network's prediction capacities, the company was able to create drills much more effective and cut costs by a huge sum. In a distinctive case, choice trees were utilized to sort underground conditions into bunches based on the factors of the burrowing. This strategy made a difference the trade figure out the leading ways to penetrate and lower the chances of apparatuses breaking down or channels getting stuck. The choice tree demonstrate gave labourers clear and valuable data that made a difference them make keen choices and move forward working execution.

There have too been great employments of relapse models to anticipate torque and drag, which gives administrators valuable data for making savvy choices ahead of time. One company utilized direct relapse models to anticipate torque and drag in genuine time. This let specialists alter how they bored to maintain a strategic distance from costly downtime and harm to the gear. This preventive strategy driven to way better boring proficiency and lower costs for upkeep [24]. The taking after case considers appear how data-driven models can have a enormous impact on boring operations. These models offer assistance specialists make strides burrowing forms, lower dangers, and save money by giving them adjust expectations and valuable data that they can utilize. As the oil and gas industry

proceeds to embrace computerized change and data-driven strategies, more machine learning strategies will likely be utilized in boring operations. This will lead to indeed more prominent changes in security, proficiency, and the environment.

B. Hybrid Modeling Approaches

When it comes to progressing boring operations, crossover modeling methods have gotten to be an effective other way of doing things within the oil and gas commerce. These strategies take the leading parts of machine learning procedures and physics-based models and put them together to form a total framework for modeling complicated boring flow. Cross breed models allow a more total and exact picture of how boring works by combining real-world information with hypothetical thoughts. This makes a difference labourers progress execution, lower dangers, and work more proficiently.

1. Combination of Machine Learning with Physics-Based Simulations

Putting machine learning and physics-based reenactments together could be a enormous step forward in how penetrating models are made. Machine learning frameworks are exceptionally great at looking at huge sets of information and finding patterns that might not be self-evident at to begin with look utilizing old-fashioned strategies. Since they can show complicated connections between factors, these calculations are awesome for speculating penetrating parameters and making operations run more easily. But machine learning models regularly depend a part on the sum and quality of information that's accessible. This could make them less exact and valuable in a few circumstances. Physics-based models, on the other hand, are based on essential science thoughts and deliver a exhaustive picture of how the soil moves and how digging works. These recreations are based on numerical models that appear how penetrating frameworks work completely different circumstances. They offer assistance us get it imperative things like shake mechanics, liquid stream, and wellbore steadiness. But physics-based models can be difficult to run on computers and may require presumptions that are distorted, which makes them less exact in complicated real-world circumstances.

Cross breed models take the leading parts of both strategies by blending the data-driven bits of knowledge of machine learning calculations with the hypothetical clarity of recreations based on material science. This mix makes it conceivable to create models that appear both the behavior that has been seen and the physical rules that control boring forms. Half breed models make penetrating optimization more precise and solid by combining these distinctive but valuable strategies.

2. Advantages of Integrating Empirical Data with Theoretical Insights

Putting together real-world information with hypothesis thoughts can offer assistance with boring optimization in a number of ways. To begin with, it makes estimates more precise and reliable by blending the data-driven insights of machine learning with the essential understanding that physics-based models deliver. This combination makes it conceivable to foresee complex boring forms more precisely, which brings down vulnerability and makes a difference individuals make superior choices. Moment, machine learning calculations can handle and study real-time information streams, which lets blended models alter to changing conditions in genuine time. This include lets specialists

alter the settings of the boring handle on the fly, which progresses execution and cuts down on time went through doing nothing. By utilizing physics-based re-enactments, half breed models can also allow specialists valuable data approximately what's truly going on when things like wellbore flimsiness or hardware disappointments happen [21]. This makes a difference them come up with way better ways to bargain with these issues. Third, blended models are more versatile and adaptable than standard strategies since they can be changed to fit distinctive cutting circumstances and working conditions. Since it is adaptable, it is conceivable to come up with custom arrangements that work for each boring project's particular issues. This makes strides add up to execution and proficiency.

3. Hybrid models used in drilling optimization

A few cases of blended models appear how well they work to make strides penetrating operations. One critical utilize is to figure the rate of entrance (ROP) and discover the leading penetrating settings utilizing blended models. In this strategy, machine learning calculations see at past boring information to discover designs and joins, whereas physics-based recreations appear how the penetrate bit and the shake move and connected mechanically. By putting these thoughts together, specialists can discover the leading balance between bit weight, turning speed, and the qualities of the boring liquid to urge the most excellent ROP and the slightest sum of hardware wear. One more case is utilizing blended models to progress the security of the wellbore and get the leading qualities from the boring liquid. Machine learning programs see at information around the highlights of the liquid, the arrangement, and the burrowing conditions. At the same time, physics-based recreations appear how the liquid and the arrangement connected with each other [17]. This bound together strategy makes it conceivable to make the most excellent liquid blends that make the wellbore more steady and lower the risk of problems like misplaced circulation or channels getting stuck. It is additionally utilized to make and move forward cutting apparatuses like bore bits and bore strings using crossover models. Combining machine learning strategies with finite component examination (FEA) recreations lets specialists test how well diverse gear plans work in a extend of circumstances, finding the leading setups that move forward boring effectiveness and lower down on damage.

C. Mechanistic Models

Robotic models play a significant part within the oil and gas industry, advertising a point by point understanding of subsurface elements and boring mechanics. These models are grounded within the standards of physics and are utilized to mimic the complex intuitive between different components of the boring framework, such as the bore string, bore bit, and penetrating liquids. By giving bits of knowledge into the elemental forms overseeing boring operations, unthinking models empower administrators to optimize execution, upgrade security, and diminish costs.

1. Role of Physics-Based Models in Understanding Subsurface Dynamics

Physics-based models are fundamental for understanding the complicated flow of subsurface arrangements and penetrating operations. These models are built on essential logical standards, such as liquid flow, shake mechanics, and thermodynamics, to mimic the behavior of penetrating frameworks beneath different conditions [9]. By capturing the basic physical forms that administer penetrating operations, unthinking models give profitable experiences into basic variables such as

arrangement properties, wellbore soundness, and liquid stream. Within the setting of subsurface flow, robotic models offer assistance administrators foresee how distinctive arrangements will react to boring exercises, permitting for the plan of optimized boring techniques. For case, these models can recreate the mechanical properties of shake arrangements, making a difference administrators select the fitting bore bit and boring parameters to maximize the rate of infiltration (ROP) whereas minimizing wear on hardware. Also, unthinking models are utilized to survey the steadiness of the wellbore, empowering administrators to execute techniques to avoid issues such as wellbore collapse or misplaced circulation.

2. Simulation Techniques for Evaluating Drill String, Bit Behavior, and Fluid Dynamics

Robotic models utilize a variety of re-enactment strategies to assess the behavior of basic components in boring operations. One such strategy is limited component investigation (FEA), which is utilized to mimic the mechanical behavior of the penetrate string and penetrate bit. FEA separates the penetrate string and bit into a limited number of components, permitting for the examination of stretch, strain, and misshaping beneath distinctive stacking conditions. This strategy makes a difference administrators evaluate the auxiliary judgment of penetrating gear and optimize its plan for progressed execution and life span. In expansion to assessing the bore string and bit behavior, unthinking models re-enact the flow of boring liquids, which play a vital part in keeping up wellbore soundness and optimizing boring execution [15]. Computational liquid flow (CFD) could be a broadly utilized recreation strategy for modeling liquid stream in penetrating operations. CFD empowers administrators to analyze the behavior of penetrating liquids beneath different conditions, such as changes in weight, temperature, and stream rate. By understanding liquid elements, administrators can optimize boring liquid properties, such as thickness and thickness, to improve cuttings transport, minimize arrangement harm, and avoid issues like misplaced circulation. Unthinking models moreover re-enact the intelligent between the penetrate string, bit, and formation, giving experiences into the strengths and torques acting on the boring framework. These re-enactments offer assistance administrators optimize boring parameters, such as weight on bit and rotational speed, to maximize productivity and diminish wear on gear.

3. Advances in Computational Power and Their Impact on Mechanistic Modeling

Later progresses in computational control have essentially affected the improvement and application of robotic models in penetrating operations. Expanded computational capacity permits for the recreation of more complex frameworks and the examination of bigger datasets, driving to more precise and nitty gritty models. High-performance computing (HPC) empowers administrators to perform recreations in a division of the time required by conventional strategies, encouraging real-time examination and decision-making [19]. The capacity to perform high-fidelity reenactments has extended the scope of unthinking modeling, permitting for the examination of more perplexing intuitive between penetrating components and subsurface arrangements. For illustration, progressed recreations can demonstrate the energetic behavior of the penetrate string and bit in real-time, bookkeeping for variables such as vibration, spin, and buckling. These bits of knowledge empower administrators to distinguish and moderate potential issues some time recently they raise, improving security and productivity. Besides, progresses in computational control have encouraged the integration of robotic models with other modeling approaches, such as machine learning and

crossover models. This integration permits for the improvement of comprehensive models that capture both the watched behavior and the basic physical standards overseeing penetrating operations. By leveraging the qualities of different modeling methods, administrators can optimize penetrating procedures more viably, making strides execution and lessening costs.

V. Implementation Challenges

Utilizing progressed modeling strategies in boring operations can be difficult for a number of reasons, counting require for specialists from distinctive areas, the quality and accessibility of information, and the accessibility of computing control. Getting past these issues is imperative for moving forward the execution of burrowing and utilizing advanced advances to their fullest within the oil and gas trade.

1. Quality and Accessibility of Data

The quality and amount of information are exceptionally imperative for the effective utilize of progressed models in penetrating operations. The quality of the information that goes into these models is exceptionally vital for how exact and dependable they are. High-quality information makes beyond any doubt that the models can accurately appear the complicated associations between burrowing variables and conditions underneath the surface. This lets us make more precise surmises and learn things that we will utilize. However, monitor botches, issues with information exchange, and changes within the environment can all lower the quality of information. Forecasts that are off-base since of deficient or boisterous information can lead to awful choices and higher commerce dangers. Making sure the information is rectify is imperative for compelling modeling and incorporates a number of critical steps. To begin with, it's imperative to set up solid rules for collecting and overseeing information so that the quality of the information remains tall amid the burrowing prepare. To do this, strict upkeep and calibration plans must be put in put for sensors and other gear. Too, botches must be found and settled in genuine time utilizing progressed information approval and confirmation strategies. Information cleaning steps, like finding and getting freed of exceptions, are moreover required to bargain with loud information and make beyond any doubt the first information is rectify and dependable [21].

Keeping up information quality incorporates learning how to bargain with information that's lost or loud. One way is to use data estimation strategies, which utilize the information that's as of now there to figure lost numbers. A few common ascription strategies are mean or middle ascription, k-nearest neighbors (KNN) ascription, and ways based on machine learning. These strategies offer assistance fill in spaces within the information, which lets models work well indeed when datasets aren't full. Sifting strategies, like moving midpoints or Kalman channels, can too be utilized to bargain with boisterous information. These methods help smooth out changes and reduce the impact of irregular clamor. These strategies can make strides the data's quality, making it more valuable for models and inquire about. Using advanced analytics apparatuses like machine learning procedures can moreover offer assistance discover and settle issues within the information, which makes the information quality and demonstrate execution indeed way better.

2. Resources and Knowledge for Computing

It takes a parcel of computer control and information to utilize complicated models in real-world burrowing exercises. Due to the complexity of these models and the tremendous sums of information that are made amid burrowing, high-performance computing (HPC) apparatuses are required to handle complicated calculations and huge datasets. It is critical to have sufficient computing control to run re-enactments rapidly so that labourers can utilize the comes about of the re-enactments to form choices in genuine time [13]. A parcel of distinctive things influence how much computing control is required for progressed modeling. These incorporate how complicated the models are, how huge the datasets are, and how rapidly the investigate must be done. For high-fidelity models, like those utilized in unthinking modeling, to speak to the complex connections between penetrating parts and underground rocks, they frequently require a part of computing control. Within the same way, machine learning models, particularly profound learning calculations, require a parcel of computer control to utilize enormous datasets to construct and test their models. Numerous oil and gas companies spend cash on cutting edge computing offices like HPC frameworks and cloud-based stages to meet these computing needs. Cloud computing has numerous benefits, counting the capacity to develop as required, being adaptable, and being cost-effective. It lets businesses get to the computer control they require without having to purchase a parcel of adapt up front. By utilizing cloud-based arrangements, administrators can alter the sum of computer control they have based on wants of their ventures. This makes beyond any doubt that they can run complex models rapidly. Utilizing progressed models in boring operations needs more than fair computer control. Data scientists and penetrating specialists got to work together over disciplines. Information researchers are specialists in machine learning calculations, information analytics, and measurable models. Boring engineers, on the other hand, know a parcel around how to penetrate, what instruments to utilize, and what the ground is like underneath the surface [19]. It is vital for individuals from these fields to work together to form models that are not as it were actually great but too valuable within the field.

For information researchers and boring engineers to work together well, they got to take after a number of key steps. To begin with, making beyond any doubt there are clear lines of contact and an demeanour of working together is critical for making beyond any doubt that both groups can work well together. This incorporates setting up chances for preparing and sharing data over disciplines so that group individuals can learn more almost each other's aptitudes and focuses of see. Including subject data to the modeling handle is another important part of working together. Penetrating engineers offer assistance information researchers make models that are particular to the requirements of the boring commerce by giving them valuable data almost the issues and needs of penetrating operations. Groups can make more precise and solid models that reflect the complexity of real-life penetrating circumstances by utilizing subject information when building models. Iterative demonstrate creation and assessment are moreover exceptionally vital for making beyond any doubt that models work well in genuine life. Real-world information and input from burrowing operations are utilized to test and make strides models all the time. By utilizing an iterative strategy, groups can discover and settle any issues or limits within the models, which over time makes them more precise and solid [23].

VI. Case Studies and Applications

Advanced modeling methods have been used in drilling operations, and the results have been many successes showing big gains in safety, speed, and cost-effectiveness. The real-world benefits of using machine learning, mixed models, and mechanical simulations in drilling processes are shown in these case studies.

A. Success Stories in Drilling Optimization

It has been supportive for a few oil and gas businesses to utilize progressed modeling strategies to move forward both the amount and quality of their burrowing exercises. One well-known case is how machine learning strategies are utilized to move forward the rate of infiltration (ROP) in difficult shale arrangements. In this case, a company utilized neural systems to see at ancient penetrating information and sensor inputs in genuine time, which made it conceivable to create exact ROP gauges. By making changes to the penetrating settings based on these forecasts, the company cut down on time that wasn't being utilized for work and raised the productivity of burrowing by more than 20%. Since of this alter, enormous cash was spared and burrowing took less time generally. Utilizing half breed models to improve wellbore solidness and get the finest qualities from boring liquid is another illustration of a victory story [24]. Combining machine learning models with physics-based re-enactments made a difference administrators make custom penetrating liquid blends that kept the stream going and harmed the shale as small as conceivable. This strategy cut down on fluid-related downtime by 15% and made the wellbore more steady, which brings down the chance of blowouts and other security issues.

Unthinking models have moreover been utilized to move forward the plan of penetrate strings and bits, which has driven to enormous changes in how well they bore. One company utilized limited component investigation (FEA) to demonstrate how the bore string would carry on mechanically beneath distinctive loads. The company utilized the data from these models to create a more grounded penetrate string that decreased vibration and wear. This made the bits last 30% longer and cut down on overhauling costs by a huge sum.

B. Lessons Learned

Indeed in spite of the fact that progressed modeling strategies have been valuable for progressing boring effectiveness, there have been a few issues with utilizing them. Making beyond any doubt that information is accessible and of great quality may be a issue that numerous individuals confront, since viable modeling depends on having great input information. To bargain with this issue, businesses have put in put solid data management arrangements and bought screen innovation to form the forms of collecting and checking information way better. Adding advanced models to current frameworks and forms is another problem that has to be solved. To do this, modeling strategies ought to be carefully coordinated with down to earth forms, and staff must be instructed how to utilize these devices accurately. Companies that have been effective at integration have done it in stages, beginning with test projects to undertake and move forward models some time recently putting them into utilize over all of their forms. This iterative handle makes it conceivable to keep moving forward models and changing them to fit the requirements of operations. It has too been pointed out how imperative it is for information researchers and boring engineers to work together

over disciplines in arrange for execution to go easily. Companies have been able to utilize the aptitudes of both groups to form models that work well actually and in genuine life by empowering them to work together and share their information. Cross-disciplinary classes and preparing programs have made a difference individuals from diverse areas get it each other way better and make beyond any doubt that groups can work well together. One of the leading ways to utilize modeling strategies in boring is to set clear objectives and execution measures for each venture. This makes a difference make beyond any doubt that the models are in line with viable objectives and produce genuine esteem. Checking and approving show execution on a regular premise is moreover important because it makes a difference groups discover and settle any issues or limits within the models, which makes them more exact and dependable over time.

VII. Conclusion

The integration of advanced modeling methodologies in boring operations marks a critical movement inside the oil and gas industry, promoting a unused level of exactness and capability in examining and removing resources. These strategies, checking machine learning calculations, cross breed models, and negligent diversions, deliver vital gadgets for optimizing entering execution, reducing costs, and overhauling security. By leveraging colossal wholes of data made in the midst of boring works out, chairmen can choose up more significant encounters into subsurface conditions and make taught choices that advance operational comes about. Data-driven models, particularly those utilizing machine learning, have outlined their capacity to absolutely anticipate fundamental entering parameters such as rate of entrance, torque, and drag. Half breed models, which combine exploratory data with physics-based re-enactments, offer a more comprehensive understanding of entering stream, capturing both observed practices and crucial physical measures. Negligent models, grounded in foremost coherent measures, continue to play a imperative portion in mirroring subsurface stream and optimizing entering strategies . The effective execution of these progressed models has driven to considerable enhancements in boring execution, as illustrated by various case ponders. Be that as it may, challenges stay in guaranteeing information quality, coordination models into existing workflows, and cultivating collaboration between information researchers and boring engineers. Tending to these challenges is basic for realizing the total potential of progressed modeling techniques and driving encourage development within the industry. As the oil and gas division proceeds to grasp advanced change, the part of progressed modeling strategies will gotten to be progressively imperative. By receiving best hones and leveraging intrigue ability, companies can optimize penetrating operations and contribute to a more maintainable and productive vitality future. This comprehensive audit highlights the current state and future prospects of progressed modeling strategies, giving important bits of knowledge for analysts and industry experts looking for to improve penetrating execution and asset administration.

References

- [1] Ganie, A.H.; Sadek, L.H.; Tharwat, M.M.; Iqbal, M.A.; Miah, M.M.; Rasid, M.M.; Elazab, N.S.; Osman, M.S. New Investigation of the Analytical Behaviors for Some Nonlinear PDEs in Mathematical Physics and Modern Engineering. *Partial Differ. Equ. Appl. Math.* 2024, 9, 100608.
- [2] Sobczyk, B.; Pyrzowski, Ł.; Miśkiewicz, M. Computational Modelling of Historic Masonry Railroad Arch Bridges. *Comput. Struct.* 2024, 291, 107214.

- [3] Alaei, S.; Durán-Micco, J.; Macharis, C. Synchromodal Transport Re-Planning: An Agent-Based Simulation Approach. *Eur. Transp. Res. Rev.* 2024, 16, 1.
- [4] Hao, D.; Chen, T.; Guo, P.; Liu, D.; Wang, X.; Huang, H.; Huang, J.; Shan, F.; Yang, Z. Artificial Optoelectronic Synaptic Devices Based on Vertical Organic Field-Effect Transistors with Low Energy Consumption. *Adv. Compos. Hybrid. Mater.* 2023, 6, 129.
- [5] Liu, M.; Wu, H.; Wang, Y.; Ren, J.; Alshammari, D.A.; Elsalam, H.E.A.; Azab, I.H.E.; Algadi, H.; Xie, P.; Liu, Y. Flexible Cementite/Ferroferric Oxide/Silicon Dioxide/Carbon Nanofibers Composite Membrane with Low-Frequency Dispersion Weakly Negative Permittivity. *Adv. Compos. Hybrid. Mater.* 2023, 6, 217.
- [6] Modi, A.; Kishore, B.; Shetty, D.K.; Sharma, V.P.; Ibrahim, S.; Hunain, R.; Usman, N.; Nayak, S.G.; Kumar, S.; Paul, R. Role of Artificial Intelligence in Detecting Colonic Polyps during Intestinal Endoscopy. *Eng. Sci.* 2022, 20, 25–33.
- [7] Zhou, Z.; Li, J.; Xi, Z.; Li, L.; Li, M. Real-time online inversion of GA-PSO-BP flux leakage defects based on information fusion: Numerical simulation and experimental research. *J. Magn. Magn. Mater.* 2022, 563, 169936.
- [8] Wu, C.; Li, B.; Bei, S.; Zhu, Y.; Tian, J.; Hu, H.; Tang, H. Research on Short-Term Driver Following Habits Based on GA-BP Neural Network. *World Electr. Veh. J.* 2022, 13, 171.
- [9] Lv, F.; Yu, J.; Zhang, J.; Yu, P.; Tong, D.; Wu, B. A novel stacking-based ensemble learning model for drilling efficiency prediction in earth-rock excavation. *J. Zhejiang Univ. Sci. A* 2022, 23, 1027–1046.
- [10] Tao, H.; Geng, L.; Shan, S.; Mai, J.; Fu, H. Multi-Stream Convolution-Recurrent Neural Networks Based on Attention Mechanism Fusion for Speech Emotion Recognition. *Entropy* 2022, 24, 1025.
- [11] Deng, Y.; Zhou, X.; Shen, J.; Xiao, G.; Liao, B.Q. New methods based on back propagation (BP) and radial basis function (RBF) artificial neural networks (ANNs) for predicting the occurrence of haloketones in tap water. *Sci. Total Environ.* 2021, 772, 145534.
- [12] Stanev, V.; Choudhary, K.; Kusne, A.G.; Paglione, J.; Takeuchi, I. Artificial Intelligence for Search and Discovery of Quantum Materials. *Commun. Mater.* 2021, 2, 105.
- [13] Zhang, Y.; Li, C.; Wang, R.; Qian, J. A novel fault diagnosis method based on multi-level information fusion and hierarchical adaptive convolutional neural networks for centrifugal blowers. *Measurement* 2021, 185, 109970.
- [14] Schmidt, J.; Marques, M.R.G.; Botti, S.; Marques, M.A.L. Recent Advances and Applications of Machine Learning in Solid-State Materials Science. *npj Comput. Mater.* 2019, 5, 83.
- [15] Gan, C.; Cao, W.H.; Wu, M.; Chen, X.; Hu, Y.L.; Liu, K.Z.; Wang, F.W.; Zhang, S.B. Prediction of drilling rate of penetration (ROP) using hybrid support vector regression: A case study on the Shennongjia area, Central China. *J. Pet. Sci. Eng.* 2019, 181, 106200.
- [16] Sosnowski, M.; Krzywanski, J.; Scurek, R. A Fuzzy Logic Approach for the Reduction of Mesh-Induced Error in CFD Analysis: A Case Study of an Impinging Jet. *Entropy* 2019, 21, 1047.
- [17] Yea, Z.; Kimb, M.K. Predicting electricity consumption in a building using an optimized back-propagation and Levenberg–Marquardt back-propagation neural network: Case study of a shopping mall in China. *Sustain. Cities Soc.* 2018, 42, 176–183.
- [18] Sosnowski, M. Computational Domain Discretization in Numerical Analysis of Flow within Granular Materials. In *EPJ Web of Conferences*; Dancova, P., Ed.; EDP Sciences: Les Ulis, France, 2018; Volume 180.
- [19] Hegde, C.; Daigle, H.; Millwater, H.; Gray, K. Analysis of rate of penetration (ROP) prediction in drilling using physics-based and data-driven models. *J. Pet. Sci. Eng.* 2017, 159, 295–306.
- [20] Oparin, V.; Timonin, V.V.; Karpov, V.N. Quantitative estimate of rotary–percussion drilling efficiency in rocks. *J. Min. Sci.* 2016, 52, 1100–1111.
- [21] 7Ajani, S. N. ., Khobragade, P. ., Dhone, M. ., Ganguly, B. ., Shelke, N. ., & Parati, N. . (2023). Advancements in Computing: Emerging Trends in Computational Science with Next-Generation Computing. *International Journal of Intelligent Systems and Applications in Engineering*, 12(7s), 546–559
- [22] Che, D.; Zhu, W.; Ehmann, K.F. Chipping and crushing mechanisms in orthogonal rock cutting. *Int. J. Mech. Sci.* 2016, 119, 224–236.
- [23] Khajehzadeh, M.; Taha, M.R.; El-Shafie, A.; Eslami, M.J. Modified particle swarm optimization for optimum design of spread footing and retaining wall. *J. Zhejiang Univ.-Sci. A* 2011, 12, 415–427.
- [24] Nikbakht, S.; Anitescu, C.; Rabczuk, T. Optimizing the neural network hyperparameters utilizing genetic algorithm. *J. Zhejiang Univ. Sci. A Appl. Phys. Eng.* 2011, 22, 20.

- [25] Liu, M. Short term load forecasting based on the particle swarm optimization with simulated annealing. In Proceedings of the 30th Chinese Control Conference (CCC), Yantai, China, 22–24 July 2011; pp. 5250–5252.
- [26] Wang, Y.L.; Liu, Y.; Che, S.B. Research on pattern recognition based on BP neural network. *Adv. Mater. Res.* 2011, 283, 161–164.
- [76] Mourtzis, D.; Angelopoulos, J. Reactive Power Optimization Based on the Application of an Improved Particle Swarm Optimization Algorithm. *Machines* 2023, 11, 724.
- [28] Zhao, J.; Guo, S.; Ma, L.; Kong, H.; Zhang, N. Tool wear monitoring based on an improved convolutional neural network. *J. Mech. Sci. Technol.* 2023, 37, 1949–1958.