

## Trichoscopy Unmasking Tinea Capitis in Elderly Individuals

Theodosia Gkentsidi<sup>1</sup>, Chryssoula Papageorgiou<sup>1</sup>, Konstantinos Lallas<sup>1</sup>, Aimilios Lallas<sup>1</sup>,  
Zoe Apalla<sup>2</sup>

<sup>1</sup> First Dermatology Department, Aristotle University of Thessaloniki, Thessaloniki, Greece

<sup>2</sup> State Dermatology Department, Hippokratio General Hospital, Thessaloniki, Greece

**Citation:** Gkentsidi T, Papageorgiou C, Lallas K, Lallas A, Apalla Z. Trichoscopy Unmasking Tinea Capitis in Elderly Individuals. *Dermatol Pract Concept*. 2023;13(4):e2023203. DOI: <https://doi.org/10.5826/dpc.1304a203>

**Accepted:** March 1, 2023; **Published:** October 2023

**Copyright:** ©2023 Gkentsidi et al. This is an open-access article distributed under the terms of the Creative Commons Attribution-NonCommercial License (BY-NC-4.0), <https://creativecommons.org/licenses/by-nc/4.0/>, which permits unrestricted noncommercial use, distribution, and reproduction in any medium, provided the original authors and source are credited.

**Funding:** None.

**Competing Interests:** None.

**Authorship:** All authors have contributed significantly to this publication.

**Corresponding Author:** Zoe Apalla, MD, PhD, Hippokratio General Hospital, Thessaloniki, Greece, 124, Delfon street, 54643, Thessaloniki, Greece. Tel. +306972916729, E-mail address: zoimd@yahoo.gr

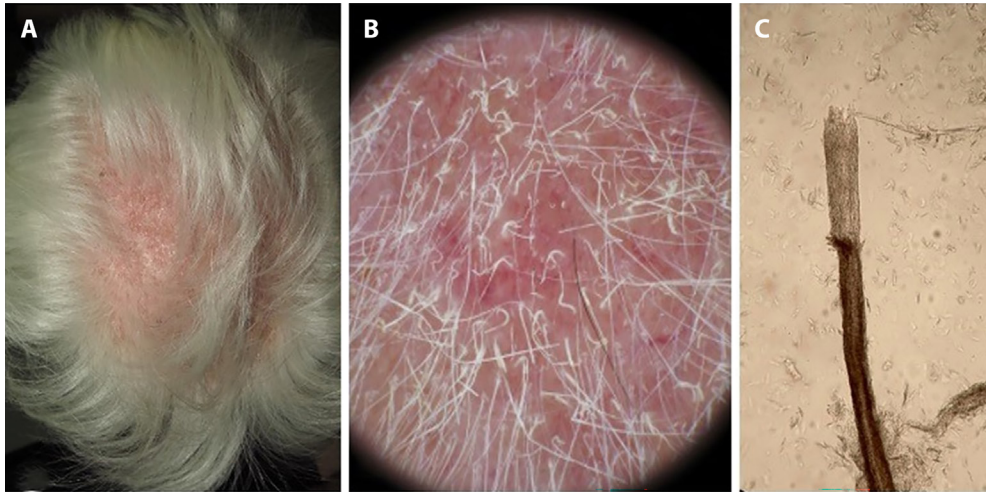
### Case Presentation

A 84-year-old female presented with a 2-year history of gradual hair loss and alopecia. Previous diagnoses included psoriasis and lichen planopilaris unsuccessfully treated with topical steroids and systemic cyclosporine (current treatment), accordingly. Clinical examination revealed erythematous and scaly plaques on the scalp, with associated alopecia (Figure 1A). Zigzag, comma, pig-tail and broken hairs in trichoscopy were highly suggestive of tinea capitis (Figure 1B)[1].

Microscopic examination showed parasitism of the hair shafts (Figure 1C)[2]. As expected, the Morse-code sign was not visible due to the white-colored hairs and *M. Canis* was identified in the culture. Complete response was achieved after 1-month treatment with systemic itraconazole.

### Teaching Point

Trichoscopy is essential in early recognition of tinea capitis.



**Figure 1.** (A) Clinical examination of the scalp revealed erythematous and scaly plaques on the scalp, with associated alopecia; (B) Dermoscopy reveals zigzag, comma, pig-tail and broken hairs; (C) Microscopic examination showing parasitism of the hair shafts.

## References

1. Rudnicka L, Rakowska A, Olszewska M. Trichoscopy: how it may help the clinician. *Dermatol Clin.* 2013;31(1):29-41. DOI: 10.1016/j.det.2012.08.011. PMID: 23159174.
2. Pihet M, Le Govic Y. Reappraisal of Conventional Diagnosis for Dermatophytes. *Mycopathologia.* 2017;182(1-2):169-180. DOI: 10.1007/s11046-016-0071-y. PMID: 27718160.