

## Pigmented Eccrine Poroma on the Palm Mimicking Nodular Melanoma

Inghlide Damanielle Silva<sup>1</sup>, João Paulo Monteiro Yamagata<sup>1</sup>, Thales Pereira de Azevedo<sup>1</sup>,  
Maria Auxiliadora Jeunon Sousa<sup>2</sup>, Thiago Jeunon de Sousa Vargas<sup>2</sup>

1 Yamagata Dermatology Clinic, Rio de Janeiro, Brazil

2 Laboratory ID – Investigação em Dermatologia, Rio de Janeiro, Brazil

**Citation:** Damanielle Silva I, Monteiro Yamagata JP, Pereira de Azevedo T, Jeunon Sousa MA, Jeunon de Sousa Vargas T. Pigmented Eccrine Poroma on the Palm Mimicking Nodular Melanoma. *Dermatol Pract Concept*. 2024;14(2):e2024131.

DOI: <https://doi.org/10.5826/dpc.1402a131>

**Accepted:** December 29, 2023; **Published:** April 2024

**Copyright:** ©2024 Damanielle Silva et al. This is an open-access article distributed under the terms of the Creative Commons Attribution-NonCommercial License (BY-NC-4.0), <https://creativecommons.org/licenses/by-nc/4.0/>, which permits unrestricted noncommercial use, distribution, and reproduction in any medium, provided the original authors and source are credited.

**Funding:** None.

**Competing Interests:** None.

**Authorship:** All authors have contributed significantly to this publication.

**Corresponding Author:** Inghlide Damanielle Silva, Visconde Taunai, 130, 27253380, Volta Redonda (RJ), Brazil.  
Telephone: +55 24988495800. E-mail: [doutoradanielle.ing@gmail.com](mailto:doutoradanielle.ing@gmail.com)

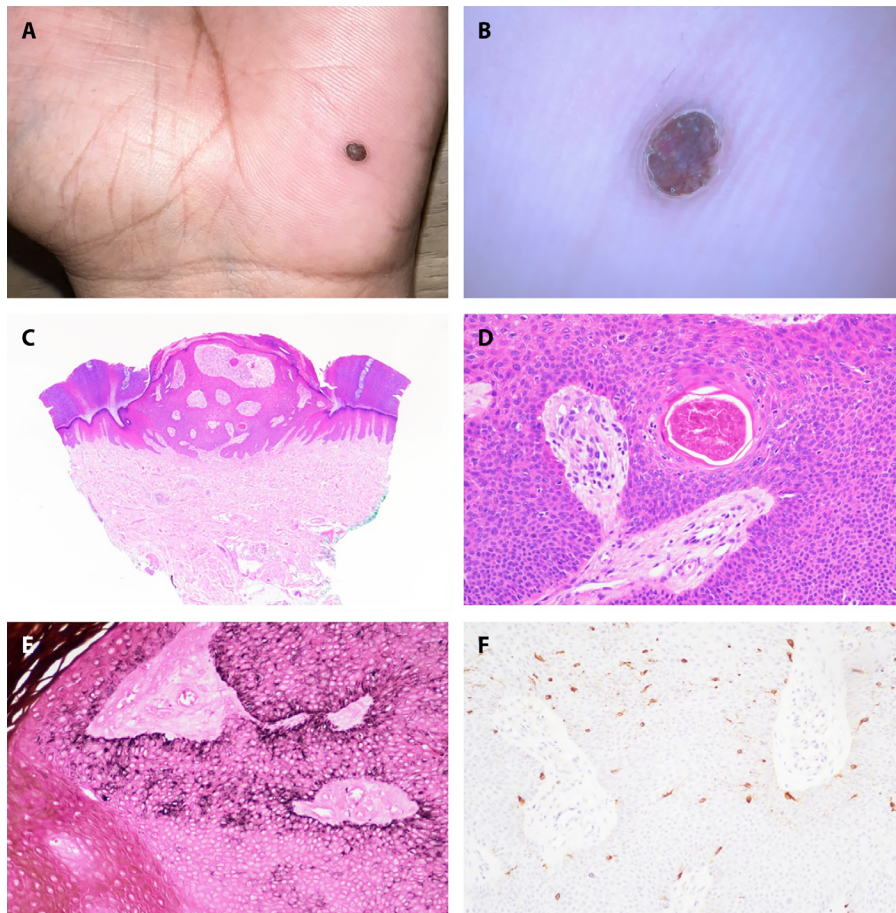
### Case Presentation

A 48-year-old male presented with a growing brownish papule over the preceding three months on the left palm, where he reported a previously existing pigmented lesion. On physical examination, he displayed a smooth-surfaced, brownish papule measuring 2 mm in diameter (Figure 1A). Dermoscopic examination revealed a poorly defined brown network, erythema, and a grayish-blue veil (Figure 1B). The lesion was excised under local anesthesia and sent for histopathological examination, which showed columns of poroid cells in continuity with the base of the epidermis and extending to the superficial dermis (Figure 1C). A closer examination revealed cuticular cells with abundant eosinophilic cytoplasm and an eosinophilic cuticle lining the glandular duct (Figure 1D). Melanin was identified in the cytoplasm of the cells, and melanocytes without forming nests among poroid cells were seen (Figures 1E, 1F). These findings were

crucial in ruling out melanoma and confirming the diagnosis of pigmented eccrine poroma (PEP).

### Teaching Point

Eccrine poromas represent 10% of sweat gland tumors, arising in the intraepidermal section of eccrine sweat ducts [2]. Rarely pigmented, the brownish coloration arises from scattered dendritic melanocytes within tumor cells [1]. There is no consensus on the dermoscopic features of PEP. Structures like streaks, a white-blue veil, and dermoscopic structures suggestive of regression, common in melanoma, have been observed in the histological variant with an epidermal component. This complicates an already uncommon diagnosis, potentially causing confusion with other pigmented tumors like melanoma, pigmented basal cell carcinoma, and Bednar tumor [2]. Therefore, histopathological examination is essential for confirming the diagnosis.



**Figure 1.** (A) Brownish papule on the left palm. (B) Dermoscopy reveals a poorly defined brown network, erythema, and a grayish blue veil. (C) Histological examination shows columns of poroid cells in continuity with the epidermis and extending to the superficial dermis. (H&E, x20). (D) Poroid cells intermingle with a smaller number of cuticular cells with abundant eosinophilic cytoplasm around a small duct lumen with debris (H&E, x400). (E) Abundant melanin was found in the cytoplasm of poroid cells (Fontana-Masson, x400). (F) Several dendritic single melanocytes were found between poroid cells (MELAN-A, x200).

## References

1. Alfredo MAC, Lai MRR, Miot LDB, Haddad GR, Garcia AL, Miot HA. Pigmented eccrine poroma in an atypical location. *An Bras Dermatol.* 2022;97(5):624-627. DOI: 10.1016/j.abd.2021.10.006. PMID: 35118192.
2. Almeida FC, Cavalcanti SM, Medeiros AC, Teixeira MA. Pigmented eccrine poroma: report of an atypical case with the use of dermoscopy. *An Bras Dermatol.* 2013;88(5):803-806. DOI: 10.1590/abd1806-4841.20131255. PMID: 24173189.