



Current Prosthodontic Overviews of TMJ Appliances: A Comprehensive Review

Dr. Nilesh Fatale¹, Dr. Gaurav Beohar², Dr. Prince Kumar³, Dr. Vivekanand Tapare⁴, Dr. Darshana Raut⁵, Dr. Nitin Nawale⁶

¹Post Graduate Student, Department of Prosthodontics and Crown & Bridge, Bhabha College of Dental Sciences, Bhopal, MP, India (Corresponding Author)

²Professor and Head of the Department, Department of Prosthodontics and Crown & Bridge, Bhabha College of Dental Sciences, Bhopal, MP, India

³Professor, Department of Prosthodontics and Crown & Bridge, Bhabha College of Dental Sciences, Bhopal, MP, India

⁴Post Graduate Student, Department of Prosthodontics and Crown & Bridge, Bhabha College of Dental Sciences, Bhopal, MP, India

⁵Post Graduate Student, Department of Prosthodontics and Crown & Bridge, Bhabha College of Dental Sciences, Bhopal, MP, India

⁶Post Graduate Student, Department of Prosthodontics and Crown & Bridge, Bhabha College of Dental Sciences, Bhopal, MP, India

Corresponding Author: Dr. Nilesh Fatale

(Received: 27 September 2025 Revised: 05 October 2025 Accepted: 14 October 2025)

KEYWORDS

Temporomandibular Joint (TMJ) Disorders, Prosthodontics, Occlusal Splint, Temporomandibular Joint Appliances, Myofascial Pain, Jaw Pain

ABSTRACT:

Temporomandibular joint (TMJ) disorders encompass a spectrum of pathologies involving the joint, associated musculature, and occlusion, often leading to pain, dysfunction, and impaired quality of life. Prosthodontic management via intraoral appliances—including occlusal splints, repositioning devices, and total joint prostheses—plays a central role in both conservative and surgical treatment phases. This article reviews the types, mechanisms, clinical indications, outcomes, and limitations of TMJ appliances from a prosthodontic perspective, surveying recent evidence, technological advances, and future directions.

Introduction

The temporomandibular joint is a complex ginglymoarthrodial joint with both hinge and gliding components, a fibrocartilaginous disc, and is highly dependent on the coordination of muscles, ligaments, and dental occlusion. Dysfunction (TMD) may arise from disc displacement, degenerative arthropathy, muscular hyperactivity, ankylosis, trauma, or developmental anomalies. Prosthodontists often engage in both diagnosis and appliance-based management, as well as, in severe cases, participating in surgical rehabilitation including joint replacement. Appliances provide reversible, less invasive means to reduce pain, restore function, modify occlusal relationships, and “test drive” therapeutic changes before more permanent restorative or surgical interventions.

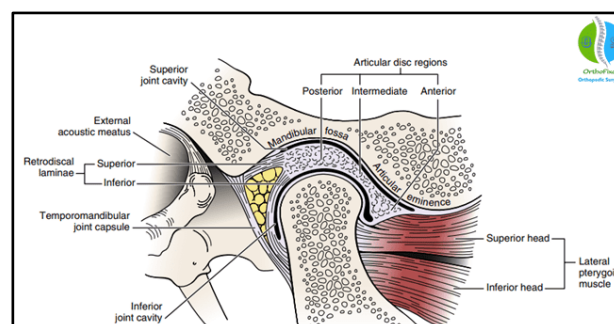


Figure 1
Types of TMJ Appliances in Prosthodontics

Occlusal Splints / Stabilization Appliances

Flat-Plane Stabilization Splints cover all or most teeth in one arch (usually maxillary), intended to distribute occlusal loads evenly, reduce parafunction (bruxism, clenching), deprogram masticatory muscles, allow the condyle to assume a more neutral position, reduce muscle hyperactivity, and help with diagnostic evaluation. (The TMJ Association)



Figure 2

Variants include **Anterior Bite Planes**, **Posterior Bite Planes**, soft or resilient splints, hydrostatic splints, and partial coverage designs. Each has different mechanical features and trade-offs in terms of comfort, force distribution, stability, and risk of unwanted occlusal changes. (adr.org.in)



Figure 3

Repositioning Appliances/Mandibular Orthopaedic Repositioners

These are directive splints that move the mandible to a therapeutic position — anteriorly or sometimes inferiorly — with the goal of recapturing a displaced articular disc, reducing joint loading, or improving symmetry. Examples include anterior repositioning splints, mandibular orthopedic repositioning appliances (MORAs). (PubMed) Risks include permanent occlusal

alterations if used long term, discomfort, muscular adaptation, and need for close monitoring. (NCBI)



Figure 4

Pivot Appliances

Pivot or distraction appliances primarily aim to increase the vertical dimension posteriorly, unloading the joint or reducing intra-articular pressure. They can be unilateral or bilateral. Generally used in internal derangement, joint pain, degenerative changes. (ipskerala.com)

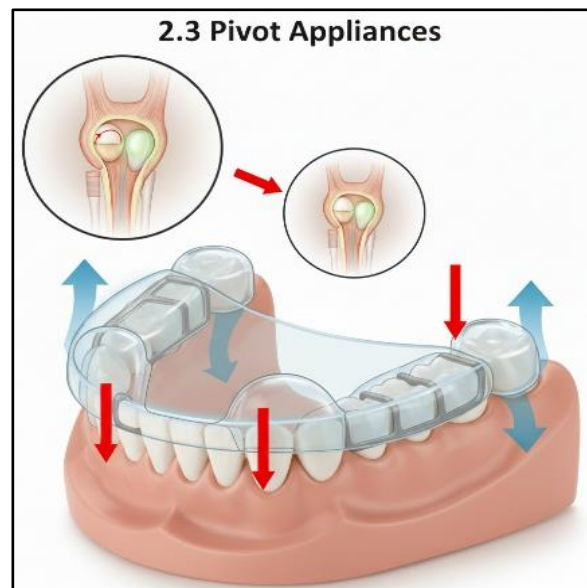


Figure 5

Soft/Resilient Appliances & Hydrostatic Devices

These are composed of pliable materials (e.g. soft acrylic, silicone, or fluid filled chambers) intended to



improve comfort, accommodate minor movements, and relieve muscle tension. They are more adaptable, but often less stable, may allow undesirable occlusal changes, less accuracy in achieving desired joint or occlusal changes. (aprd.in)

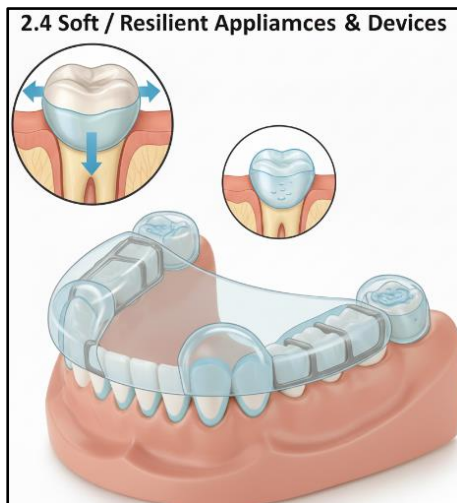


Figure 6

Total Joint Prostheses (Alloplastic TMJ Replacement)

In severe or end-stage joint disease (ankylosis, degenerative changes, failed prior therapy, craniofacial syndromes), prosthodontic input is essential in designing, planning, and restoring occlusion and function post-replacement. Prostheses may be stock or custom, often using CAD/CAM technologies, 3D printing. (PubMed)

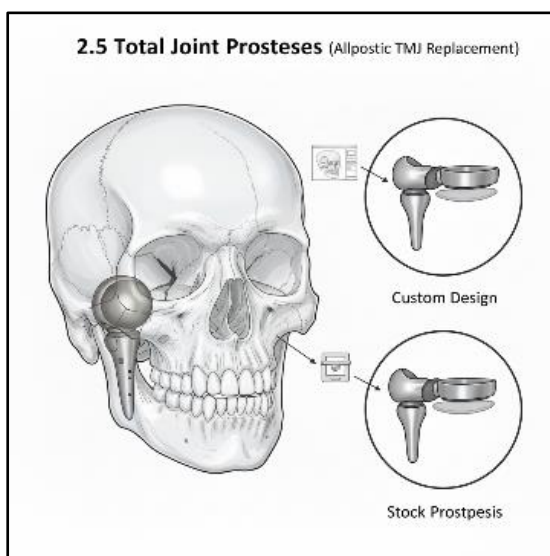


Figure 7

Mechanism of Action

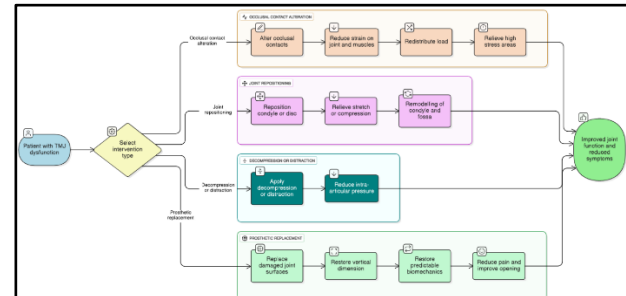


Figure 8

Altering occlusal contacts reduces strain on the joint and muscles; redistribution of load (especially in splints) helps relieve high-stress areas. (PubMed)
 Repositioning can physically move the condyle, affect disc position, relieve stretch or compression of joint structures. Remodelling of the condyle and fossa may occur in response to functional appliance treatment. (PubMed)
 Decompression or distraction (e.g. pivot appliances) aims at reducing intra-articular pressure. (PubMed)
 Prosthetic replacement supplants damaged joint surfaces, restores vertical dimension, allows predictable biomechanics, reduces pain and improves opening. (PubMed)

Clinical Indications

- Myofascial pain, bruxism, muscular hyperactivity without severe structural changes
- Internal derangements with disc displacement (with or without reduction), clicking, locking
- Degenerative joint disease where pain and functional limitation persist after conservative treatment
- Ankylosis (fibrous or bony), trauma, congenital or developmental joint deficiencies
- As adjuncts in pre-prosthetic, pre-orthodontic or full-mouth rehabilitation to “test” occlusal vertical dimension, mandibular position etc.
- In severe cases, total joint replacement when other treatments fail. (PubMed)

Evidence of Outcomes

Splint and Repositioning Appliance Outcomes

In the systematic review “Impact of functional mandibular advancement appliances on the TMJ”, use of functional appliances (Herbst, Twin Block, Bionator, Activator etc.) showed that in healthy patients, no significant adverse effects; condyle tends to move anteriorly; remodelling of condyle and adaptation of glenoid fossa. (PMC) However, for class II patients treated with fixed mandibular repositioning, evidence regarding changes in disc morphology, condylar



positional changes, articular surface morphology is inconsistent or contradictory; many studies risk bias, small samples, methodological heterogeneity. (PubMed) Studies of appliances on intra-articular pressure show that stabilization appliances reduce upper compartment pressure significantly when clenching (e.g. a drop of ~31% with an inter-occlusal appliance) compared to clenching without appliance. (PubMed)

Prostheses/Total Joint Replacement Outcomes

- Clinical analysis of customized alloplastic TMJ prostheses (n≈31 patients followed up to 7 years) showed significant reduction in pain (from mean ~5.5 to ~2.2 on pain scales), improved maximum mouth opening (from ~25.8 mm preop to ~35.9 mm postop), stable function over long-term follow-up. (PubMed)
- Quality of life outcomes following TMJR: systematic review of ~64 studies including >2000 patients showed consistently high rates of pain reduction (75-87%), improvements in interincisal opening by 26-36 mm, and improvements across physical, social, psychological domains. Custom prostheses tended to yield advantages in complex anatomy or in revisions. Complication rates (heterotopic ossification, infection, chronic pain) exist but are manageable. (PubMed)
- 3D-printed custom TMJ prostheses in a Chinese prospective series (n=9) showed excellent short-term outcomes: good implantation accuracy (mean deviation ~0.432 mm), improved mouth opening, pain relief, diet, mandibular function, facial symmetry. (PubMed)
- Systematic reviews comparing stock versus custom (CAD/CAM) prostheses find both perform well, particularly in first six months, but custom devices offer better fit, adaptation, possibly less complication in complex cases. (mednext.zotarellifilhoscientificworks.com)

Limitations, Risks, and Challenges

- **Diagnostic uncertainty:** Many appliance studies suffer from small sample sizes, heterogeneous diagnoses, variable imaging modalities (MRI, CBCT, Cephalometry) and outcome measures. Makes comparison difficult. (PubMed)
- **Occlusal changes:** Repositioning splints used long term risk permanent changes in the bite; partial-coverage or directive appliances must be used carefully. (Lippincott Journals)
- **Patient compliance:** Wear time, adjustment of appliance, follow-ups is crucial. Lack of consistent wear or follow up leads to less favourable outcomes.
- **Material and design issues:** Soft appliances more comfortable but less durable; rigid appliances more precise but less comfortable. For prostheses, implant

materials, design of the condylar and fossa components, wear, friction, fatigue etc. matter.

- **Cost, access, surgical morbidity:** Total joint replacement involves significant surgical procedure; custom prostheses more expensive; access to digital technology, imaging, manufacturing may be limited in many settings.
- **Complications:** Infection, heterotopic bone formation, chronic pain, implant failure, possible interference with growth in paediatric patients, though short- to medium-term follow up suggests no overt growth inhibition in many studies. (PubMed)

Technological Advances

- The use of **CAD/CAM**, virtual surgical planning, patient-specific implants, 3D printing for prostheses and splints increases precision, fit, reduces operative time, and improves functional and aesthetic outcomes. (PubMed)
- Digital workflows for occlusal splint design: intra-oral scanning, CBCT, facial scanning, multimodal imaging allow precise determination of therapeutic positions. Recent work on a computer-aided design of personalized occlusal positioning splints using multimodal 3D data demonstrates high fidelity to planned positions. (arXiv)
- Biocompatible, wear-resistant materials for prostheses, possibly antimicrobial surfaces, material interfaces, improving longevity and reducing complications.

Guidelines / Prosthodontic Decision Framework

A suggested framework for prosthodontists to choose among appliance options:

Step	Considerations
Diagnosis	Accurate imaging (MRI, CBCT), assessment of disc status, joint morphology, occlusion, pain sources, muscular involvement.
Severity & Stage	Mild/moderate muscular/TMJ dysfunction vs structural damage / ankylosis.
Goals	Pain reduction, function (mouth opening), restoring occlusion, correcting asymmetry, delaying or avoiding surgery, or preparing for surgery.
Appliance Selection	Type suited to goal: stabilization for muscle-based pain; repositioning for disc displacement; prosthetic



Step	Considerations
	replacement when joint destruction is severe. Design, material, coverage, tolerable changes.
Monitoring & Adjustment	Regular follow-ups; adjustment of appliance to avoid unwanted side effects; ensure compliance.
Transition Plan	For repositioning or prosthetics, plan for final occlusal restoration or definitive rehabilitation.

Future Directions

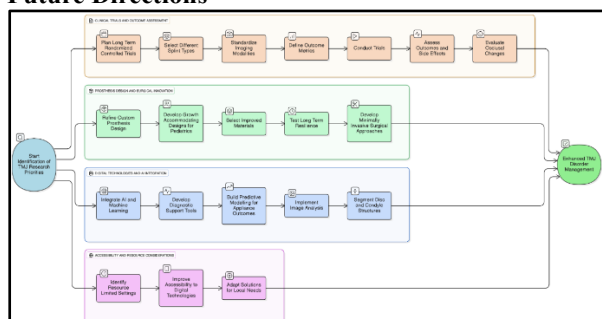


Figure 9

Long-term randomized controlled trials of different splint types, comparing outcomes, side-effects, occlusal changes, ideally with standardized imaging modalities and outcome metrics. Further refinement in custom prosthesis design: growth accommodating designs for paediatric use, improved materials, long-term resilience, minimally invasive surgical approaches. Integration of AI, machine learning for diagnostic support, predictive modelling of appliance outcomes, image analysis (segmentation of disc, condyle etc). Greater accessibility to digital technologies in resource-limited settings.

Conclusion

TMJ appliances represent a spectrum from conservative splints to full alloplastic joint replacement, with important roles for prosthodontists. While occlusal splints and repositioning appliances offer reversible, non-invasive means to manage many patients with TMD, their success depends heavily on correct diagnosis, appliance design, compliance, and monitoring. For advanced joint disease, prosthetic total joint replacement shows promising outcomes in pain relief, function, and quality of life, especially with custom designs and digital planning. As technology and evidence evolve, personalized, precise treatments will likely drive future practice, but careful attention to risks, costs, and long-term stability is essential.

References

- Ivorra-Carbonell L, Montiel-Company JM, Almerich-Silla J-M, Paredes-Gallardo V, Bellot-Arcís C. “Impact of functional mandibular advancement appliances on the temporomandibular joint” – systematic review. *Med Oral Patol Oral Cir Bucal*. 2016;21(5):e565–e572. (PMC)
- Systematic review: Changes in TMJ morphology in Class II patients treated with fixed mandibular repositioning appliances. (PubMed)
- Influence of oral stabilization appliances on intra-articular pressure of the TMJ. (PubMed)
- Management of TMJ ankylosis: clinical outcomes of various appliances. (PubMed)
- Prosthetic management of a masticatory muscle disorder with customized occlusal splint (case report). (PMC)
- Quality of Life Outcomes Following Total Temporomandibular Joint Replacement: systematic review. (PubMed)
- Clinical analysis of TMJ Replacement Using Customized Prosthesis up to 7 years follow-up. (PubMed)
- Clinical and radiological outcomes of Chinese customized 3-dimensionally printed total temporomandibular joint prostheses. (PubMed)
- Total temporomandibular joint replacement prostheses: systematic review and bias-adjusted meta-analysis. (PubMed)
- Accuracy of custom-fitted TMJ alloplastic reconstruction using virtual surgical planning. (PubMed)
- Major clinical approaches of prefabricated and customized prostheses for TMJ: systematic review. (mednext.zotarellifiloscientificworks.com)
- Role of hydrostatic occlusal devices in TMD management. (aprd.in)
- “Guardians of the temporomandibular joint: The occlusal splints—an overview” (classification and functions). (adr.org.in)
- Types of splints and guidelines for use (partial coverage, directive vs permissive splints etc.). (Lippincott Journals)
- Custom design of a temporomandibular joint prosthesis using finite element analysis and optimized kinematic center. (ovid.com)