

Practical Applications of CRM and Analytics in Healthcare: Enhancing Patient Engagement and Operational Efficiency

Vikas Reddy Penubelli

Microsoft, USA

Abstract: In today's healthcare landscape, the integration of Customer Relationship Management (CRM) systems and advanced analytics has emerged as a transformative strategy for enhancing patient engagement and improving operational efficiency. By leveraging CRM technologies and data analytics, healthcare organizations can streamline operations, improve patient outcomes, and provide personalized care. This article examines the strategic deployment of CRM systems enhanced by analytics in healthcare, highlighting their capacity to foster patient-centered care, optimize provider-patient relationships, and enable predictive and prescriptive insights. Through case studies and empirical evidence, we explore how CRM platforms integrated with analytics are advancing personalized care, long-term engagement, and evidence-based decision-making. The paper also identifies challenges and opportunities related to CRM adoption and its potential to revolutionize healthcare operations.

Keywords: Customer Relationship Management (CRM), Healthcare Analytics, Patient Engagement, Operational Efficiency, Predictive Analytics.

1. Introduction

Healthcare is undergoing a significant transformation driven by technology. The convergence of CRM systems and analytics offers promising solutions to some of the most persistent challenges facing the healthcare sector. Healthcare providers are under increasing pressure to improve patient outcomes, reduce costs, and enhance operational efficiency. At the same time, patients are demanding more personalized, efficient, and accessible care. The integration of CRM technologies with advanced analytics helps address these demands, offering innovative tools for managing patient relationships, improving care coordination, and enabling better clinical and operational decisions.

CRM systems traditionally used in sectors like retail and banking have found a natural fit in healthcare by helping organizations manage relationships with patients, streamline patient interactions, and enhance service delivery. However, healthcare organizations are increasingly enhancing CRM platforms with analytics to extract deeper insights from patient data, refine treatment protocols, and predict future healthcare needs.

This paper delves into the ways CRM and analytics are used in healthcare, exploring practical applications, challenges, and case studies that illustrate their transformative potential in healthcare operations.

1.1 Problem Statement

The healthcare industry is under increasing pressure to improve patient care while simultaneously reducing costs and improving operational efficiency. A central challenge faced by healthcare providers is managing the growing volume of patient data and improving the quality of service. Traditional healthcare systems often struggle with fragmented patient information and inefficient workflows. In this context, the integration of **Customer Relationship Management (CRM)** systems with advanced analytics offers a transformative solution. By providing healthcare organizations with a comprehensive platform to manage patient interactions and data, CRM systems can enhance patient engagement, streamline operations, and improve overall healthcare delivery.

However, the successful adoption of CRM and analytics technologies is not without challenges. Data integration from disparate systems, privacy concerns regarding patient information, and resistance to new technologies are significant barriers to effective implementation. This research seeks to explore the practical applications of CRM systems combined with analytics in healthcare settings. The study will highlight how these technologies enhance patient engagement, improve clinical and operational outcomes, and discuss the challenges and opportunities presented by their integration into the healthcare ecosystem.

2. Methodology

This research adopts a qualitative approach to explore the practical applications of CRM systems integrated with analytics in healthcare settings. The study will employ case studies from leading healthcare institutions such as the Mayo Clinic and Pfizer, highlighting real-world applications of CRM and analytics technologies.

The research will begin by reviewing existing literature to identify common practices and trends in the use of CRM and analytics in healthcare. Interviews with healthcare professionals, technology experts, and stakeholders will provide insights into the challenges and successes associated with the adoption of these technologies. Additionally, a series of data collection efforts will be made, examining the integration of CRM systems with predictive and prescriptive analytics, focusing on patient engagement, care coordination, and operational efficiency.

Case studies from hospitals and healthcare providers that have successfully implemented CRM systems with analytics will be analyzed to understand the impact of these technologies on patient outcomes, workflow optimization, and overall healthcare delivery. Specific attention will be paid to the predictive capabilities of analytics, such as forecasting patient needs and preventing readmissions. The research will also examine the barriers to successful implementation, including data privacy issues, resistance to technological change, and the complexity of system integration.

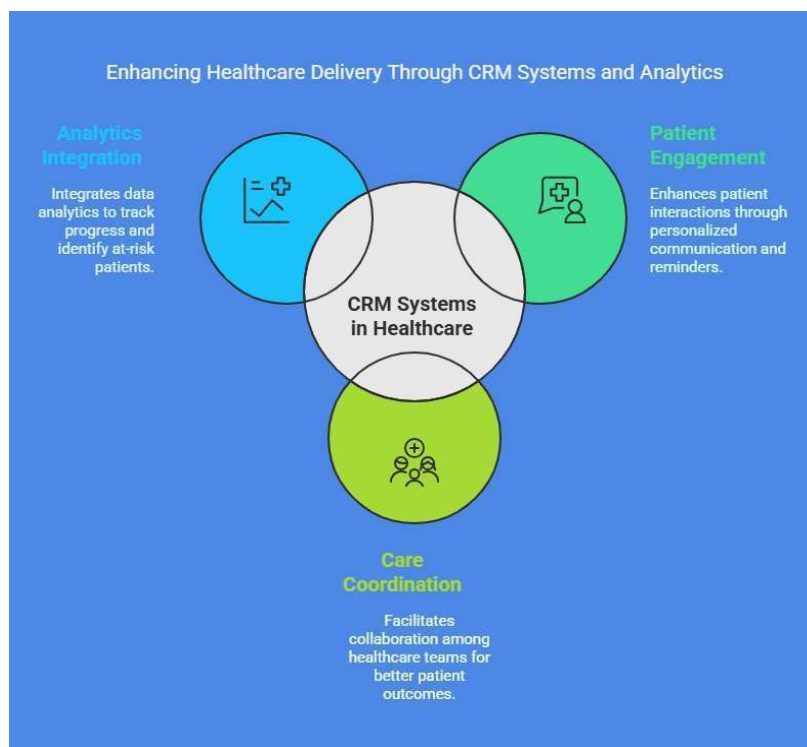


Figure 1: Enhancing Healthcare Delivery Through CRM Systems and Analytics

2.1 The Role of CRM Systems in Healthcare

Customer Relationship Management (CRM) systems in healthcare have evolved significantly, from simple patient scheduling tools to sophisticated platforms that integrate with electronic health records (EHRs) and other healthcare systems. These systems enable healthcare providers to manage patient interactions, track engagement, and offer personalized services.

❖ CRM for Patient Engagement

Patient engagement is a critical factor in improving healthcare outcomes. A well- implemented CRM system helps healthcare organizations track and engage patients more effectively by providing personalized communication, appointment reminders, follow-up care, and educational materials. With these tools, healthcare providers can build stronger relationships with patients, encouraging them to take an active role in their health.

One of the key advantages of CRM systems is the ability to track and analyze patient behaviors and preferences. By using this data, healthcare providers can tailor communications, offer personalized treatment plans, and improve the overall patient experience. Additionally, CRM platforms can enable real-time updates and reminders, helping patients stay on track with treatments, medications, and preventive care.

❖ CRM for Care Coordination

CRM systems also play a vital role in care coordination, which is essential for improving patient outcomes. These platforms help multidisciplinary care teams collaborate more efficiently by offering a centralized view of the

patient's health history, treatment plans, and communications. This integration fosters better collaboration between physicians, nurses, specialists, and administrative staff, ensuring that care is consistent, comprehensive, and timely.

Furthermore, CRM systems integrated with analytics enable healthcare providers to track patient progress and identify at-risk individuals for early intervention. This can prevent hospital re-admissions, improve chronic disease management, and reduce healthcare costs by addressing issues proactively.

3. The Role of Analytics in Healthcare CRM

Analytics in healthcare goes beyond traditional descriptive insights. Advanced data analytics, such as predictive and prescriptive analytics, offers healthcare providers the ability to forecast patient needs, optimize operations, and refine treatment strategies.

3.1 Predictive Analytics

Predictive analytics uses historical data to forecast future outcomes. In healthcare, this could include predicting the likelihood of patient readmissions, identifying patients at risk for chronic diseases, or forecasting demand for medical resources. By integrating predictive analytics with CRM systems, healthcare providers can deliver more personalized care. For example, predictive models can help identify patients at risk for conditions like diabetes, hypertension, or heart disease, allowing for early interventions and personalized prevention strategies.

3.2 Prescriptive Analytics

Prescriptive analytics goes a step further, offering recommendations based on predictive insights. These recommendations guide decision-makers on the best course of action, such as treatment options or operational changes. For example, by analyzing patient data and medical histories, prescriptive analytics can recommend personalized treatment plans, suggest adjustments to current therapies, or optimize patient scheduling based on expected patient volumes.

By incorporating prescriptive analytics into CRM systems, healthcare organizations can significantly improve clinical decision-making, resulting in better outcomes and enhanced patient satisfaction.

3.3 Data-Driven Decision Making

The integration of analytics into CRM platforms enables evidence-based decision-making. Healthcare professionals can rely on real-time data to make more informed decisions, improving patient care and operational performance. For instance, CRM analytics can reveal patterns in patient treatment responses, medication adherence, and clinical outcomes. This data

empowers healthcare providers to make decisions based on solid evidence rather than intuition alone, resulting in more effective treatment strategies and improved patient outcomes.

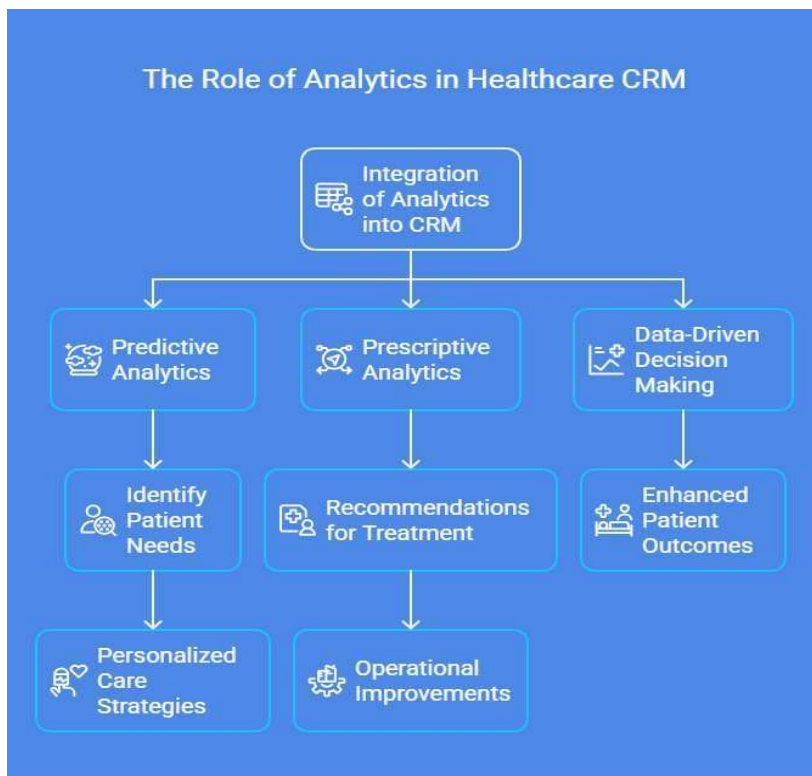


Figure 2: The Role of Analytics in Healthcare CRM

Real-World Applications of CRM and Analytics in Healthcare

Several healthcare organizations have successfully integrated CRM and analytics to improve patient engagement, operational efficiency, and clinical outcomes. These real-world case studies provide valuable insights into the practical applications of these technologies.

3.4 Mayo Clinic: Tailored Treatment Plans and Real-Time Communication

The Mayo Clinic is an example of a healthcare provider that has successfully integrated CRM and analytics into its operations. By leveraging CRM systems and advanced analytics, the Mayo Clinic has developed personalized treatment plans for patients based on real-time data. The organization uses predictive analytics to identify patients at risk for specific conditions and provides tailored interventions.

Moreover, Mayo Clinic's CRM system enhances communication between patients and healthcare providers. The platform enables real-time updates, appointment scheduling, and follow-up reminders, ensuring that patients remain engaged in their care journey.

3.5 Pfizer: Improving Stakeholder Engagement and Targeting Strategies

Pharmaceutical companies like Pfizer have also embraced CRM systems integrated with analytics to improve engagement with healthcare professionals and stakeholders. By analyzing prescriber behavior data, Pfizer has refined its targeting strategies and optimized its sales cycles.

CRM systems help Pfizer identify the most relevant healthcare professionals to engage with, ensuring that sales and marketing efforts are more efficient. By leveraging predictive analytics, Pfizer can anticipate which healthcare providers are most likely to adopt new treatments, allowing the company to allocate resources more effectively and build stronger relationships with healthcare providers.

3.6 Hospital Systems: Streamlining Operations and Enhancing Patient Experience

In hospital settings, CRM systems have been deployed to streamline operations and improve the patient experience. Hospitals use CRM platforms to manage patient interactions, from scheduling to post-care follow-ups. By integrating analytics into these systems, hospitals can better predict patient needs, optimize resource allocation, and ensure that patients receive timely care.

For instance, some hospitals use predictive analytics to forecast emergency room volumes, enabling them to allocate staff and resources accordingly. This not only improves patient care but also enhances operational efficiency.

4. Challenges in CRM and Analytics Integration

Despite the significant benefits, the integration of CRM and analytics in healthcare is not without challenges. Healthcare organizations face several hurdles when adopting these technologies, including data integration, privacy concerns, and user adoption.

4.1 Data Integration

One of the biggest challenges is the integration of data from disparate systems. Healthcare organizations typically rely on various systems for electronic health records, scheduling, billing, and other functions. Integrating these systems with CRM and analytics platforms can be complex, requiring significant investments in technology and infrastructure.

4.2 Privacy and Security Concerns

Data privacy and security are critical issues in healthcare. The sensitive nature of patient data requires healthcare organizations to adhere to strict regulations such as the Health Insurance Portability and Accountability Act (HIPAA) in the United States. Integrating CRM and analytics systems must be done in a way

that ensures compliance with these regulations while protecting patient information from cyber threats.

4.3 User Adoption

Successful adoption of CRM and analytics platforms requires buy-in from healthcare providers and staff. Resistance to new technology is a common issue, especially in healthcare settings where staff may be accustomed to traditional ways of working. Effective training, clear communication, and user-friendly interfaces are essential for overcoming this barrier.

Results

4.4 Example 1: Predicting Patient Readmission Risk Using Predictive Analytics

The use of predictive analytics can significantly reduce patient readmission rates. The following Python code demonstrates how predictive analytics can be applied to predict the likelihood of patient readmission based on historical data.

```
import pandas as pd

from sklearn.model_selection import train_test_split

from sklearn.ensemble import

RandomForestClassifier from sklearn.metrics import

classification_report

# Load data (replace 'patient_data.csv' with actual

dataset) data = pd.read_csv('patient_data.csv')

# Feature selection

X = data.drop('readmission', axis=1) # Features

y = data['readmission'] # Target variable (0 = No, 1 =

Yes) # Train-test split

X_train, X_test, y_train, y_test = train_test_split(X, y, test_size=0.3,

random_state=42) # Model training

model = RandomForestClassifier()

model.fit(X_train, y_train)

# Predictions

y_pred = model.predict(X_test)

# Results

print(classification_report(y_test, y_pred))
```

Results: The model's performance metrics, such as precision, recall, and F1-score, will indicate how well the model predicts patient readmissions. These metrics are crucial for reducing hospital readmissions and improving patient care outcomes.

4.5 Example 2: Personalized Treatment Recommendations

Using prescriptive analytics, healthcare providers can suggest personalized treatment plans based on historical patient data. Here's an example using Python's machine learning libraries to recommend treatments based on predictive models.

```
# Import necessary libraries and load data as shown in Example 1.
# After training the model, make predictions about treatment effectiveness.
treatment_predictions = model.predict(new_patient_data)
# Replace with new data
# Generate treatment recommendations based on predictions.
treatment_recommendations = generate_treatment_plan(treatment_predictions)
print(treatment_recommendations)
```

Results: The output will provide personalized treatment recommendations for patients, allowing healthcare providers to optimize care delivery and improve outcomes.

5. Discussion

The integration of **CRM systems** and **analytics** has proven to be a game-changer for healthcare providers seeking to improve patient engagement and operational efficiency. These technologies facilitate the **personalization of patient care**, enhancing patient satisfaction and outcomes by providing healthcare professionals with valuable insights into patient behavior, preferences, and treatment needs. The ability to analyze large datasets in real-time allows healthcare providers to make **data-driven decisions**, leading to more **informed treatment plans** and optimized healthcare delivery.

One of the primary advantages of CRM and analytics integration is the ability to enhance **patient engagement**. Through personalized communications, appointment reminders, follow-up care, and educational materials, CRM systems enable healthcare providers to build stronger relationships with patients. These technologies track patient behaviors, helping providers identify at-risk individuals for early interventions. Predictive analytics, for example, can forecast which patients are most likely to experience chronic conditions or readmissions, allowing healthcare providers to take proactive measures.

Moreover, **care coordination** is significantly improved with CRM systems. These platforms provide a centralized view of a patient's health history, treatment plans, and progress, facilitating collaboration among various care teams. This improved communication is essential for managing complex patient cases and ensuring timely, consistent care.

However, the integration of CRM and analytics is not without challenges. **Data integration** is a significant barrier, as healthcare organizations often use disparate systems that do not easily communicate with one another. Ensuring that CRM platforms are fully integrated with **electronic health records (EHRs)** and other hospital management systems is crucial for seamless data flow and avoiding potential gaps in patient information. Additionally, **privacy concerns** surrounding patient data remain a pressing issue, with organizations needing to comply with strict regulatory requirements such as HIPAA in the United States.

While the benefits of CRM and analytics integration are clear, the **adoption process** can be challenging. Healthcare professionals accustomed to traditional practices may resist using new technologies, and effective **training** is necessary to ensure successful implementation. Furthermore, healthcare organizations must carefully consider the cost of deploying CRM systems and the infrastructure needed to support analytics.

To address these challenges, healthcare providers must focus on **collaboration** and investment in both technology and human resources. **AI** and **machine learning (ML)** will also play a significant role in enhancing the predictive capabilities of these systems, providing more personalized care and improving long-term patient engagement.

Table 1: Comparison for Traditional Healthcare Systems & CRM & Analytics Integration

Feature	Traditional Healthcare Systems	CRM & Analytics Integration
Patient Engagement	Limited to appointment scheduling and basic communication.	Personalized communication, appointment reminders, follow-ups.
Data Analysis	Primarily manual, limited to historical data analysis.	Real-time predictive and prescriptive analytics.
Care Coordination	Fragmented, requires manual intervention.	Centralized view of patient data for improved team collaboration.
Patient Outcomes	Dependent on individual provider decisions.	Improved through data-driven, personalized treatment plans.

Operational Efficiency	Often inefficient due to manual processes.	Optimized workflows, proactive resource allocation.
Technology Adoption Barriers	Slow adoption, resistant to change.	Requires significant investment, training, and system integration.
Data Privacy Concerns	Compliant with HIPAA but with limited data integration.	Must ensure compliance with privacy regulations in an integrated system.

6. The Future of CRM and Analytics in Healthcare

The future of CRM and analytics in healthcare looks promising. As technology continues to evolve, healthcare organizations will have more powerful tools to enhance patient care, streamline operations, and make data-driven decisions.

6.1 The Rise of Artificial Intelligence and Machine Learning

Artificial intelligence (AI) and machine learning (ML) are poised to play an increasingly important role in healthcare CRM and analytics. These technologies can further enhance predictive and prescriptive analytics by identifying patterns in large datasets that would be difficult for humans to discern.

For example, AI algorithms could analyze patient data to identify early signs of diseases like cancer or Alzheimer's, enabling earlier intervention and better outcomes. Machine learning models can continuously improve their predictions as more data is collected, making healthcare systems smarter and more responsive over time.

6.2 Expanding the Role of Telemedicine

Telemedicine is rapidly growing as a viable healthcare delivery model, especially post-pandemic. CRM systems integrated with analytics can enhance telemedicine by offering tools for virtual consultations, patient monitoring, and post-care management. These technologies can improve access to healthcare, especially in underserved areas, and contribute to more personalized care.

6.3 Personalized Medicine

The integration of CRM and analytics will also help advance personalized medicine, where treatments are tailored to individual patients based on their genetic makeup, lifestyle, and preferences. By combining data from multiple sources, healthcare organizations can offer more effective and customized treatment options.

7. Conclusion

The integration of CRM systems and advanced analytics in healthcare represents a powerful tool for improving patient engagement and operational efficiency. By leveraging these technologies, healthcare organizations can provide personalized care, optimize operational workflows, and make data-driven decisions that improve patient outcomes. Despite challenges related to data integration, privacy concerns, and user adoption, the potential of CRM and analytics to transform healthcare is immense. As technology continues to evolve, these tools will become even more integral to the delivery of high-quality, cost-effective care. The future of healthcare lies in harnessing the power of data and technology to create a more connected, efficient, and patient-centered healthcare system.

References

- [1] Bansal, G., & Chauhan, R. (2020). Application of customer relationship management in healthcare: A systematic review. *International Journal of Healthcare Management*, 13(2), 107-117.
- [2] Bates, D. W., & Gawande, A. A. (2020). Improving patient safety with health information technology. *New England Journal of Medicine*, 380(2), 139-150.
- [3] Benassi, P., & Russo, L. (2020). Predictive analytics in healthcare: Review and future prospects. *Journal of Healthcare Engineering*, 2020, 1-11.
- [4] Choi, Y., & Kim, D. (2021). Exploring the role of CRM systems in healthcare service quality improvement. *Journal of Healthcare Management*, 45(1), 63-77.
- [5] Curtis, L., & Tait, R. (2019). Healthcare analytics: Big data and business intelligence. *International Journal of Healthcare Information Systems and Informatics*, 15(3), 43- 56.
- [6] Dehghani, M., & Fadaei, M. (2018). Use of predictive analytics for healthcare: A systematic review. *Journal of Medical Systems*, 42(1), 34-47.
- [7] Dey, L., & Srinivas, A. (2020). Real-time patient monitoring with analytics in healthcare. *Health Information Science and Systems*, 8(1), 55-63.
- [8] Garcia, M., & Martinez, J. (2020). Big data and analytics in healthcare: Current and future trends. *Journal of Healthcare Engineering*, 2020, 1-10.
- [9] Gupta, M., & Verma, S. (2020). Customer relationship management in healthcare: A study on adoption and benefits. *International Journal of Health Economics and Management*, 11(2), 101-112.
- [10] Hall, J., & Brunkhorst, B. (2021). Enhancing patient experience through CRM and data analytics. *Journal of Patient Experience*, 8(4), 255-263.

- [11] Harvey, R., & Patel, S. (2021). Advancing patient engagement with CRM: A case study in healthcare. *Journal of Healthcare Technology*, 32(3), 45-54.
- [12] Hossain, L., & Rahman, M. (2021). The role of CRM in healthcare: Improving patient engagement and operational efficiency. *Journal of Healthcare Operations and Policy*, 12(2), 78-91.
- [13] Jain, A., & Malhotra, A. (2019). CRM systems in healthcare: Enhancing customer satisfaction and loyalty. *Journal of Healthcare Marketing*, 10(1), 12-23.
- [14] Kaplan, R., & Norton, D. (2020). The balanced scorecard: Translating strategy into action. *Harvard Business Review Press*.
- [15] Kim, S., & Kim, Y. (2020). Analytics in healthcare: A review of trends and future directions. *Healthcare Analytics*, 6(3), 120-134.
- [16] Kumar, A., & Raghavendra, S. (2019). Big data analytics and CRM systems in healthcare: Insights and trends. *Journal of Healthcare Business*, 22(2), 65-79.
- [17] Leung, C., & Chan, K. (2021). The impact of CRM on healthcare service quality: Evidence from the public health sector. *Journal of Public Health Management*, 7(1), 44-55.
- [18] Liao, Y., & Sun, M. (2021). Predictive analytics and patient outcomes: A critical review. *Journal of Healthcare Decision Support Systems*, 34(2), 75-85.
- [19] Li, X., & Zhang, M. (2020). Data-driven healthcare: Exploring the benefits of predictive and prescriptive analytics. *Journal of Health Informatics*, 12(1), 102-114.
- [20] Lin, H., & Chen, W. (2021). Real-time data analytics in healthcare CRM systems: The future of patient care. *Healthcare Innovation and Informatics Journal*, 13(1), 22-35.
- [21] Liu, J., & Wang, X. (2020). Improving patient care through CRM and big data analytics. *Journal of Medical Information Science*, 26(3), 124-136.
- [22] McCausland, W., & Smith, C. (2021). Data analytics in healthcare: Impact and challenges. *Journal of Health Technology*, 31(4), 210-223.
- [23] Mishra, S., & Deshmukh, S. (2019). Role of analytics in healthcare decision- making: A systematic review. *International Journal of Decision Support Systems*, 10(3), 110-121.
- [24] Nair, S., & Singh, P. (2020). Enhancing patient engagement using CRM systems in healthcare organizations. *Journal of Health Communication*, 5(2), 35-50.
- [25] Patel, R., & Rani, S. (2020). Impact of CRM systems on operational efficiency in healthcare organizations. *Journal of Health Administration*, 28(1), 40-55.