

# Auvergne-Rhône Alpes





### Pre-2016 Regions of Metropolitan France



*GeoCurrents Map*

# Introduction

- Borders Switzerland and Italy
- Capital: Lyon
- Second largest population in France with 8 million people
- Created in 2016 when France reformed its territories



# A Brief History

- Combination of Auvergne and Rhône-Al

## Lyon

- One of the oldest cities
- Founded as a military colony called Lugdunum in 43 BC by the Romans
- Lyon became capital of Gaul
- During the Renaissance, the establishment of commercial fairs allowed Lyon to flourish
- Became a major trading city during the middle ages

# Geography

Home of three massifs  
(Central, Alpes, Jura)

- Almost 70% of its territory is mountains
- Access to the Mediterranean via the Rhône corridor



# Climate

January



[View](#)

February



[View](#)

March



[View](#)

April



[View](#)

May



[View](#)

June



[View](#)

July



[View](#)

August



[View](#)

September



[View](#)

October



[View](#)

November



[View](#)

December



[View](#)

# Farming

- Gardening plays an important role in Auvergne-Rhône-Alpes
- Around 42% of households in rural areas have a garden or orchard
- Slopes from mountains add a challenge to farmers
- Often use terraces for farming
- Farmers have to keep in mind where they are located on the slope
- Temperature also influences the length of life for produce
- Farmers often use greenhouses and have been working to acclimate produce



# Produce

- Largest producer of apricots
- Second largest producer of peaches, raspberries, walnuts, cherries and tinned tomatoes



# Wine

- Rhône Côte Rôtie- from the Syrah grape
- Condrieu- finest white wine
- Hermitage- red wine



# Live Stock

- Two local cattle breeds: the Tarine and the Abondance
- The meat sector, which generates annual revenue of €2.8 billion
- The dairy sector, with annual revenue of €1.9 billion



# Cheese



Produce 46% of the national AOC cheese

Famous for:

- Saint Nectaire
- Cantal
- Salers
- Fourme d'Ambert
- Bleu d'Auvergne

# Organic Farming

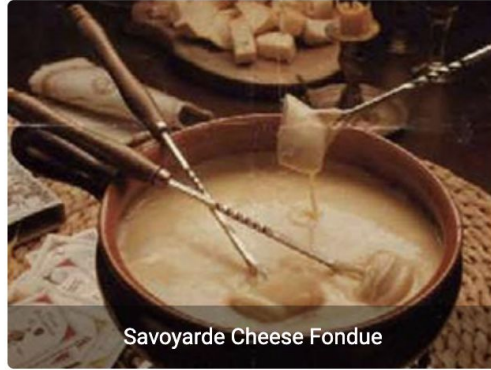
- France's second-largest surface of land under organic farming
- The regions subsidizes businesses to encourage small business food production
- Distributes financial aid to those who participate in international trade fairs



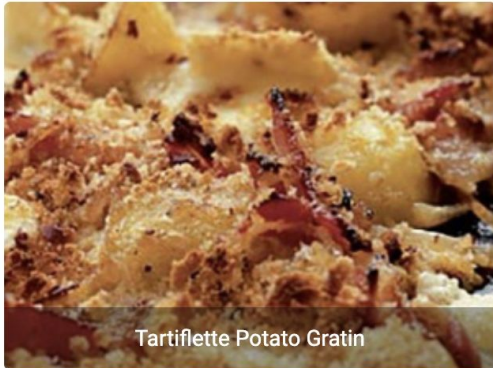
# Popular Dishes



Rhône-Alpes Raclette Cheese Dish



Savoarde Cheese Fondue



Tartiflette Potato Gratin



Lyon Quenelle de Brochet



Montélimar Nougat Candy- peeled almonds, 16% Lavander honey and 2% pistachio nuts.

# Paul Bocuse

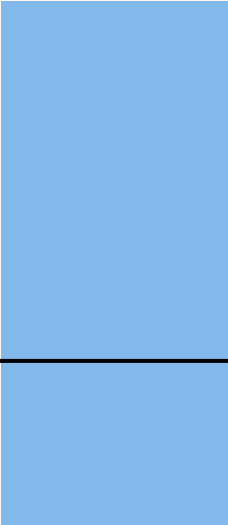

- Symbolic figure of Lyon's and France's gastronomy
- Eight restaurants and brasseries in Lyon, Paris and Annecy
- Heritage and tradition, authenticity, modernity and friendliness are themes in his restaurants



# Bouchons

- Lyon is famous for its bouchons
- These are a type of bistro that has a warm, friendly atmosphere a local specialties on the menu
- Help to keep traditions passed on to next generations





# **Gastronomy, Terrier, and French Values**