

Socio-spatial Equilibrium as a tool to raise the efficiency of residential complex planning Bismayah city as a model

Abbas Fadel Abba^{a)}, Luai Taha mohammed^{b)}

University of Baghdad, Center for Urban and Regional Planning for Graduate Studies, Baghdad, Iraq

^{a)} Abbas.Fadel1200b@iurp.uobaghdad.edu.iq

^{b)} luai.t_mohammed@yahoo.com

Abstract.:

The concept of social balance is an important concept in any architectural design and for any building, especially residential complexes for a multi-family style because of its importance in our time due to the worsening housing crisis, and to reach designs approaching the pattern of single-family housing where there is a dialectic relationship between the physical and moral aspects and the reliance on material aspects away from the moral and social aspects leads to the emergence of many social problems within these complexes such as weak interaction, friction and social communication between Individuals. Therefore, when planning residential complexes, it requires the creation of different and renewed patterns and solutions that keep pace with the nature of families and their spatial and social requirements resulting in response to human behavior towards the residential environment. The problem of research was the lack of knowledge about the role and importance of socio-spatial balance that ensures the spatial and social interaction of the population and supports the sense of security, reassurance, collective control and protection in the residential environment, and the possibility of raising the efficiency of new housing complexes. A key objective is to try to establish a comprehensive knowledge about the role and importance of socio-spatial balance that ensures the spatial and social interaction of the population and supports a sense of security, reassurance, collective control and protection in the residential environment. The research assumes the hypothesis that the level of the population's sense of stability in the environment of residential complexes increases the more balanced at the level, social - spatial and urban - and environmental, research methodology research methodology adopted the research method inductive statistical analysis by concluding scientific facts by extrapolating and analyzing the parts and their interdependence to reach the overall truth. The results showed that the process of meeting the housing need and designing residential complexes is an ongoing process and requires effective coordination between the efforts of all parties in order to achieve their objectives and make their results come as required, that the place consists of two elements the physical element is all that surrounds the individual and the moral element is the sense of place, the human being and the place are linked to the element of time.

Keywords: social Equilibrium -Place - sustainable planning- Residential complexes

Introduction

Housing is a fundamental need for human beings and one of the main criteria for improving the quality of life, and the main challenge in housing policies in most countries, especially developing ones, is to meet the housing need and to harmonize with the rates of increase in population growth, and

in many writings that addressed the problem of housing have been used to limit it to its quantitative dimension of a shortage of housing units available when compared to the size of demand for them, and our talk is often focused on physical and urban aspects. And economic. We rarely talk about man, who is the main element in the residential complex and in the city as a whole, and in the midst of

our ill-considered rush to urbanization, we may forget or forget that the human, social, environmental and aesthetic aspects are central points in the urbanization of cities and settlements. You interact with a place where there must be factors that help to interact, such as sensory comfort, emotion, a sense of protection, security, and then the place becomes familiar. He has the mental feelings associated with his memories as well as his sense of pleasure in moving and moving around to realize all its elements and components.

The first axis: - general concepts related to social balance

Equilibrium:

The word equilibrium appears in the dictionaries

Balance is the source of "balance", and the balance of the two things is equal in weight. The balance is based on the weight of interaction in the sense of participation, so that each actor in the word is effective in the meaning. Balance has a counterpart in meaning: balance is the source of "balance", and justice weighs any moderation of the other and becomes equal to it in weight and lightness, and the two things weigh equal weight. As well as the word "budget" is a balanced source, it balances this if it is weighed or is aligned. [Lewis Maalouf, 1956]

The definition of Chapple and Coon

they point out that it is a situation of a particular pattern when pressed by a small force in which a certain change occurs, and once this force disappears the pattern returns almost to its previous state and notes that the previous contents of the concept of balance It was characterized by the generality of photography or any pattern, whether natural or social, and did not depart from the meaning of equality and equality, which derives its significance from the description of the state of balance, but adding social character to

balance, it leads to farther contents and connotations, as will be shown. [Ike Holtecrates, 1972].

Social equilibrium

Parsons' social balance is the highest picture of integration and order within the format, but its importance in the face of all forms of incompleteness and change, through which a higher degree of integration is achieved through a set of mechanics and processes generated by its construction to preserve itself, and the study of balance is a study of the way in which elements of the pattern achieve stability and continuity when some changes or deviations appear within the format, but the manifestations of inefficitivity and imbalance in society have been seen by Parsons as deviations from shared values. Existing standards must then be confronted with controlled operations, so that the balance of socialization and social control returns.[Ali, Al-Fatlawi, , 1996]

Conte's social balance is harmony in society that represents the stability situation, while the side of change represents the continuing movement of society, progress is its greatest reality, and his study aims to reveal the laws governing its continuity, and the stable aspect governs its subject is analytical analysis, while the aspect of change is empirical. According to Conte, stability and change are necessary, and a real social system cannot be established if it is not conducive to progress or conformity. A real social system cannot be established if it is not conducive to or identical to progress, and continuous progress is not possible, if it is not demonstrated and supported by its system and the separation of stability and the state of change, but dictated by analytical objectives, because the laws of stability and change are linked together through the idea of macro-format, and the reconstruction of society - according to Conte - requires this correlation in its combination and consolidation of stability, change or order and progress, to give effective solutions to the problems affecting society and Conte believes that social problems and tensions affect the

consistency of society and its agreement Its balance and stability are disrupted, which can be overcome by relying on the positive educational system by placing the means of education and means of physical coercion in that one is to be reformed in a way that society does not lose its structural harmony and balance. [Nicolas Schiff,1993].

The procedural definition of the concept of equilibrium is a state of dynamic stability and the highest stage reached by societies when society becomes free of tension and deviations that hinder the process of social interaction.

The concept of social balance in functional structural theory

Functional structural theory is based on the assumptions of the organic trend that prevailed in the first social theories in sociology. Its overall view of society as a living being has the status of continuity over time, and at the same time it has an organic, human-like organization nature, equipped with devices that maintain its balance in the face of internal and external changes, if the human body. Maintaining its temperature, society, in turn, has structured self-governing defensive mechanisms, and functional construction looks at anything, whether it's a living or social being, whether it's an individual, a small group, a collective organization, a society, or even the whole world as a system or system. This format consists of a number of interrelated parts. She believes that each format requires fundamental needs to be met, otherwise the pattern will perish or change fundamentally. Society for example, needs methods of regulating behavior (law or normative controls), a childcare group (family) and so on, and the pattern must always be balanced: in order to achieve. [Samir Naim,1985].

The concept of Place:

This concept is a fundamental concept in various branches of scientific knowledge, there is no doubt that belonging to the place is the first conditions of social existence, a fundamental determinant of the identity of the

individual and society, and a container for all forms of thought, creativity and culture. No one is born, nor is there a society, suspended in space, and we cannot imagine a social or cultural existence outside the context of the place, as the place embraces the existence of the individual from birth, even after his departure, and then the place comes with the identity of things, phenomena and societies.. [Muadh Al-Alusi,1988].

Dr. Chalabi defined the place as the human space containing a measure of customs, traditions and intellectual formulas, as well as time, which is a real dimension in the measure of the functional transformations of the place, as a result of the dynamic social perception of the constantly changing reality of life and the good place is the good conductor of all sensations. Man cannot feel the performance of the place unless the place achieves the protection and ease of movement it needs and the addition of an aesthetic spatial atmosphere that makes man feel the desire to interact with the place by reviving the spirit of the city and creating a state of interdependence between the city as a violin and the city as the human being of the place that determines the identity of the individual, society and the container of all events.. [Sobeih Chalabi,2000].

The Elements Place:

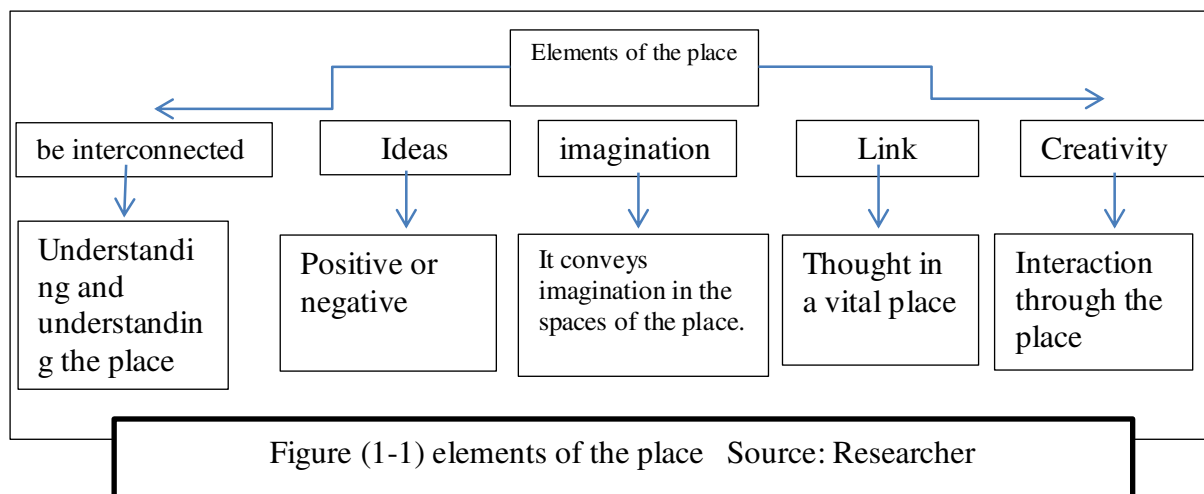
The place is determined by different elements, the most important of which is [Gaston Bachelard,1980]

1. Creativity: There is no place without creativity, no creativity without a place. The place suggests creativity, in the sense that the place is loaded with ideas that the creator should use to build his deposit and achieve the summary of his creative interaction with the place.
2. Link: Any links in our brains that determine the responses of life place and elements is according to what contributes to our survival.
3. And imagination: like the dream departure in the spaces of the place and its effects and assets, the imagination is colored

by the elements of the place and it is the place that exists in the depths of man.

4. Ideas: Negative ideas and positive ideas according to the two cases determine the nature of life in the place and the fact of human thinking that the negative attracts the negative and positive attracts the positive.

5. Communication: Societies that absorb their place have a better life and because their relationship with the place will be a relationship of love, beauty and creative interaction that contributes to the development of the mind of the place and the understanding and understanding of the place.



If we go back to Schulz in his book *Genius Loci*, he believes that the boundaries of knowledge help to sense space and realize it as a place where the place requires limits and identity of knowledge arising from the interaction of the individual with the environment, the place is the coherent appearance of human habitation, and it is the association of the place with its local circumstances that creates the identity of the place or its soul (Schulz, 1980) the place arises as a result of the relationship between the natural and artificial elements surrounding it, and is felt through the mutual relationship between these elements The sense of place is the result of the relationship between the principal and these elements. The principal is the object that occupies the place and the place can be considered the result of the interaction between the organism and the environment, but Rapoport emphasizes that the place represents a certain symbolic system for the expression of meaning as relationships in the physical environment are spatial relationships

above all where the elements are related to the people within the place [Rapoport,1977]. Man and space are linked in one way or another to the element of time, which imposes the character of permanent change on both. Transformation is a characteristic of the place, and man is one of the parties to this transformation and its tools, the place is the basis for the launch of all events and activities and is the first pillar of human beings old and new. [Rapoport,1977].

Levels Place:

During the study of the concept of the place, it shows three levels that make up the place of its overlays [Al-Jabra, 1989.].

- 1- Shop - represents the physical structure of the place.
- 2- Man - the active element in determining the value of the place, man gives the place an intellectual building, consisting of mental images, memories, ideas and also adds a dynamic act that represents the event in which it occurs.

3- Time - a level that includes man and shop for permanent change. It is an indicator of the vitality of the place.

Place Theory:

The intellectual dimensions of this theory go one step further than the concepts of space mass and interdependence, adding components to human, cultural and historical needs as well as the natural environment of the site (in other words, it takes the effects of the natural and cultural environments [Philips,2003]

This theory will be addressed through three axes:

A- Location characteristics of the place:
Each place has its own unique characteristics derived from the ocean, so that it acquires the body, texture, color and degree of surroundment. and others) and the imperceptible elements of cultural, social and historical elements acquired by that place through human use over time [**Lynch, 1984**]

B- Uses of land and place:
It is totally impossible to neglect basic functions and events within the urban environment, nor can it be overcome by the fact that these jobs and urban events require places to be established (shelters for protection, character-building, trade, education, etc.). These urban activities and activities are embodied in the urban environment as uses of land in them [Ibrahim, 1977] and perhaps the most prominent contribution to changing land uses are the economic and social drivers associated with the transformations taking place in cities and increasing their population, which leads to significantly increased change Or it is motivated by internal or external emergency causes that raid cities and their activities, as well as the weakness of the planning agencies sometimes in adopting the baseline schemes and the efficiency and method of their implementation, which usually leads to the

impact on the distribution and overlap of urban events within cities, so the process of signing the appropriate spatial for the use of urban land and organizing the relations between them are key pillars in the success of the basic plans by absorbing emergency variables and thus creating an urban scene characterized by clarity in meaning and the possibility of perception by the recipient [**Khalis A-Laship,1982**]

C- Mass participation and a sense of place:

Most of the concepts leading to modern planning trends are in fact individual planning decisions based on simplified assumptions about human needs, a modest view of the city's historical content and a lack of focus on the wishes of society, which are important elements that the urban and even architectural planner must take in the process of regulating the urban environment. It is not permissible to ignore or ignore the ideas and opinions of people and their perceptions about their city and how to organize its urban structure and visualize its scene because this neglect or disregard will lead to the production of a city that lacks the character of communication between it and its inhabitants and does not express their will and desires, the place is not an abstract site but it is A physical entity that is hoarded by the apparent and latent meanings, it is not possible to judge a place through its external form or visual limits only because it is a virtual judgment and lacks wisdom because the physical or formal given is related to the moral meaning of the place, whereas the physical dimension examines the personalities and structures and its visual and motor axes and proportional relations and structural aspects i.e. the physical aspects of the place, i.e. the physical presence of that place, while examining the moral and symbolic dimensions of the place in historical background, events and meanings underlying those buildings and meanings behind those buildings. And the specialists [**Church, 1994**] The research here emphasizes the

intangible aspects associated with the place, which are the feelings, beliefs and legacy of people, which impose permanent status on the place, which must be taken into account when making any planning decision. It is not permissible to ignore or ignore people's ideas, opinions and perceptions about their city and how to organize its urban structure and visualize its landscape because this neglect or disregard will lead to the production of a city that lacks the character of communication between it and its inhabitants and does not express their will and desires.

The Relationship between Human and the place

There were many concepts of the social dimension with the place, describing the relationship between man and place, which means describing the human feeling towards the place as follows:

- Spatial organization is a personal or direct relationship with the place, and indicates the harmony of the individual in his relationship with his social surroundings.
- Spatial organization is the overall relationship of man with the place.
- Spatial organization is a close or secure relationship with the place.

With regard to concepts that have harmed spatial organization, the first group confirmed the system or format by using the term "part of a unit, place or something", making man part of the structure of the place or object and its entity or existence either in this place or with this thing, and notes that one of these concepts within this group also introduced a behavioral concept as well as structural concepts. This concept is represented by the term compatibility with the place, and it can be said that the organization with the place appears here through the pattern that controls the elements and parts as well as its control over the human being and his behavior, as part of this system. With regard to the second group, which introduced the concept of symbolic association, it made spatial organization morally or spiritually the result of the

possession of certain symbolic values and aspects that stimulate human emotion and feelings, which is of course evident in some ancient places of a religious nature or places with certain human memories. [David, 1988 p. 34]

As a result of the above, although the intellectual and philosophical origins of these concepts differ and addressed many aspects of spatial organization, some of them have been associated with the behavioral aspects of man such as compatibility, and others have been associated with the place such as the place of foot and residential, as the other described the relationship between man and place and promised it a direct, holistic and secure relationship and a pet, natural and symbolic connection. This concept indicates that it is in keeping with the individual's keeping up with the natural and social environment, i.e. it is a relationship of impact and impact on the environment. [Andrew, 2004].

The concepts that expressed organization in association put forward two terms: pet and natural with the place. The pet connection does not appear until after the human being is accustomed to seeing the place and seeing its elements and components as a result of its continuous coexistence in it, the place becomes familiar to its occupants as a result of the mental plans that the individual has about him until the human feels compatible with the place when he is familiar to him through his association with him close relationship and its establishment of his own world, but the natural connection means that the relationship between man and place is a relationship that arises by nature, man is broken on the love of the place the relationship of man with the place Be through the format or system that controls the elements. [Towers, 2005].

Social place:

The place expresses itself in terms of form or different forms and the multiplicity of meanings and the place expresses itself in the scene or presence, as well as being a physicist occupying a space of the wider space of the

place, and the place is the theater on which the events are represented (facts + events + movement) and means that events (facts + events) are the ones that express the subjective meaning of the place and movement that gives the ability to continue these events and the place becomes more effective [Schulz, 1980]. Social space is seen from the social view of the cultural background that plays its role in developing a sense of place, including perception and taste, influenced by the age and the urban environment in which man lives, as human perceptions and feelings have a common aspect of all human beings everywhere - the cosmic perspective) and a changing aspect of that human being alone in a specific place - (the direction of total values) and in order to ensure the addition of social spatial relationships that coincide with the function of human space. Every human being is collectively unconscious while the response to this effect appears individually consciously, varying from person to person, and this reminds us of Schulz's statement that you are, i.e., to form a place [Chalabi, 2000]

Structural spatial association is one of the human needs with psychological, intellectual and social characteristics that form the means of interaction where social construction finds a reflection in the structure perceived by man, so the individual always seeks to establish an intimate relationship with the place where he lives. Even if the places he moves change during his life — he always seeks to form a relationship between these places, one that reflects the essence of his existence and reflects his identity. It is not impossible for him to live anywhere in these places, and this place may be narrowed and radiated, but man cannot live without a place to which he is familiar and forgets, and who is given comfort and tranquillity. If man lacks this comfort, tranquillity and familiarity with the place, this place becomes a scary place holding heartless. It turns into a large prison, and then man has always solved and travelled in search of a place that meets his need for tranquillity, tranquillity, security and security. We are

talking about the socio-cultural place that expresses human interaction with this geographical space in which he lives, as well as the ability of the individual to shape the place, perhaps reshape it, turn it into a place to love and forget, and express his identity. I think here of the greatness of our ancestors and their ability to reshape the features of the desert, to reclaim it and turn it into a place where they are associated with and to forget about it, and to express their identity, that identity that has emerged in their ways of life, creativity, customs and traditions, through the nature of the professions on which they depended in the face of the demands of life. They were therefore better able to discover "Desert Aesthetics [David, 1974].

This confirms the individual's ability to give beauty to the place where he lives, as well as his or her ability to enjoy and shape the beauty he has shared in his creativity. The sense of beauty of the place stems from the nature of the aesthetic consciousness of the individual, the aesthetically conscious self has an aesthetic taste or compass capable of discovering the aesthetics of the place, and able to understand the depth and breadth of this beauty. The infinite sense of space, or spatial distress in our insides, is not associated with anything outside," Bachlar asserts in his book *Aesthetics of the Place*. (Bachlar, 1980, p. 47), the social place stems from the social background and cultural level of the individual on the basis of which there are social places that vary from country to country according to the nature of those countries.

Vital Social:

It is intended to interact between the population in a particular space (urban space) with certain similar or diverse activities and perhaps places (spaces) with diverse activities are more vital than in similar activities and the reason is due to the diversity of human needs and therefore the diversity and diversity of people and increase their access to those activities to meet those needs while one activity fills one human need mostly and therefore the limited people who are

frequented and therefore limited space available when we talk about the vital place we are talking about the social place and the dimensions. The social dimension is that invisible bond contained by the group and beyond, the visual and auditory communication between its other members is interrupted and can be likened to the family scope, which it does at the level of the relationship between the participating groups and at the level of the residential site [Hall, 1966]. He controls the field of residential patterns and methods of assembly, as the world (Hall) indicates that man is unaware of the existence of these dimensions, and this lack of awareness can be explained in that we

can feel others in terms of proximity or dimension, but we cannot always realize what made us diagnose them as well, many things happen at the same time and they are different, so it is difficult to identify the information sources on which our reactions are based so that the latter is instinctive and spontaneous, the human being is the decision maker in making the decision to make. This place is one of the most beautiful parts of the earth or otherwise by selecting the appropriate methods and methods of planning in organizing the place and adding some aspects.

Table (1.1) Indicators of the theoretical framework for socio-spatial

Indicators	Equilibrium	Social-Spatial
<ul style="list-style-type: none"> • Social spatial organization is the method of organizing the urban environment. • Social spatial organization of any urban environment depends on the physical and behavioral environment surrounding the individual 		Spatial-social
<ul style="list-style-type: none"> • The relationship of man with the place is through the pattern or system that controls the social elements and parts and the connection of man with the place does not show the most distant human re used to the place • The human relationship with the social place depends on the social homogeneity between the inhabitants 		Human relationship with social space
<ul style="list-style-type: none"> • No awareness is that the human being is aware of what is around him and interprets the information that reaches the brain. • Sensory and cognitive perception gives meaning to the behavioral environment. • The mental impression of the place depends on the mental image associated with the individual about the place and strengthens the connection to the place. 		Realizing the place
<ul style="list-style-type: none"> • Human behavior has two main determinants: the first is the environment that contains natural factors, and the second factor lies in humans and innate factors that cause differences in behavior and orientation. • There is a link between human perception of the environment and human behavior towards it. They bring their behavior into line with the behavioral and civilizational standards to which they belong. 	Factors	affecting perception
<ul style="list-style-type: none"> • The space and functional dimensions of the environment affect patterns of social relations • Positive space has several advantages (it is a partial closed 		Urban social spaces

<p>space, surrounded by physical boundaries, provides a sense of security that is difficult to spread crime within because of the difficulty of entering strangers</p> <ul style="list-style-type: none"> • The convergence of spaces contains social relationships, as opposed to the space that causes weak social relationships. 	
<ul style="list-style-type: none"> • Homogeneity, tenure, ownership, visual surveillance, privacy . • The hierarchy of spaces is a condition of security and safety . • Security checks the organization of entrances and exits to residential complexes, the adoption of good lighting entrances and reliance on closed tracks 	<p>Factors influencing security in residential complexes</p>

Source: Researcher based on the theoretical aspect

2-The second axis: - practical study

Formulating the hypothesis

Based on the above prior knowledge and concepts that achieve the goal of research and enable the solution of the research problem, the text of its hypothesis has been determined" that the level of the population's sense of stability in the environment of residential complexes increases the more balanced at the level, social - spatial and urban _ and environmental.

Basic requirements for application:

- Measurement method used
 Statistical analytical inductive approach by inferring scientific facts by extrapolating and analyzing the parts and their interdependence to reach the overall truth.

- The rationale for selecting the sample for applied projects:

An elected part of society selected on scientific grounds that ensures full representation of society. After the research community was identified in the previous paragraph, the research sample was assigned 400 forms distributed to a specific percentage of the study community, because the study community is a community consisting of homogeneous housing complexes in terms of

www.psychologyandeducation.net

design, urban shape and urban structure on it, 400 (form on the research sample and as follows) western style / eastern style) were distributed equally. Description of the study area of the new city of Basmiya geographical location and importance:

The New City of Basmiya project is the first and largest development project in The history of Iraq, located in Basmaia, southeast of Baghdad, about (10) km from the center of Baghdad on the international road linking Baghdad-Kut and on an area of 1,830 hectares and hopefully To accommodate about 600,000 people and the total number of housing units is 100,000 units, and will be the construction of a network of infrastructure of electricity, water and main streets, in addition to public facilities to be developed by the Government of Iraq, including Educational, religious, recreational and commercial facilities, as well as water treatment and wastewater treatment plants, will be the most exclusive city in Iraq and the first national housing programme project to have undergone several transformations in the Basmayeh region. Where it was in the past a barren land and when the rain fell on it the water remained stagnant in it for a while so it came called (but water) and for that ecological nature on which it was named the area (but water) and was then set up on its land a training camp called (Camp Basmiya) the camp continued on the land of Basmaia for years, until the camp was moved to another

place and remained empty land and then allocated for residential investment by the Iraqi Ministry of Planning due to its wide area and proximity to the area. The city of Baghdad was therefore contracted with the Korean company Hanwa by the Iraqi National Investment Authority to establish a residential

project with a vertical construction system and is now called the "New City of Basmaya".

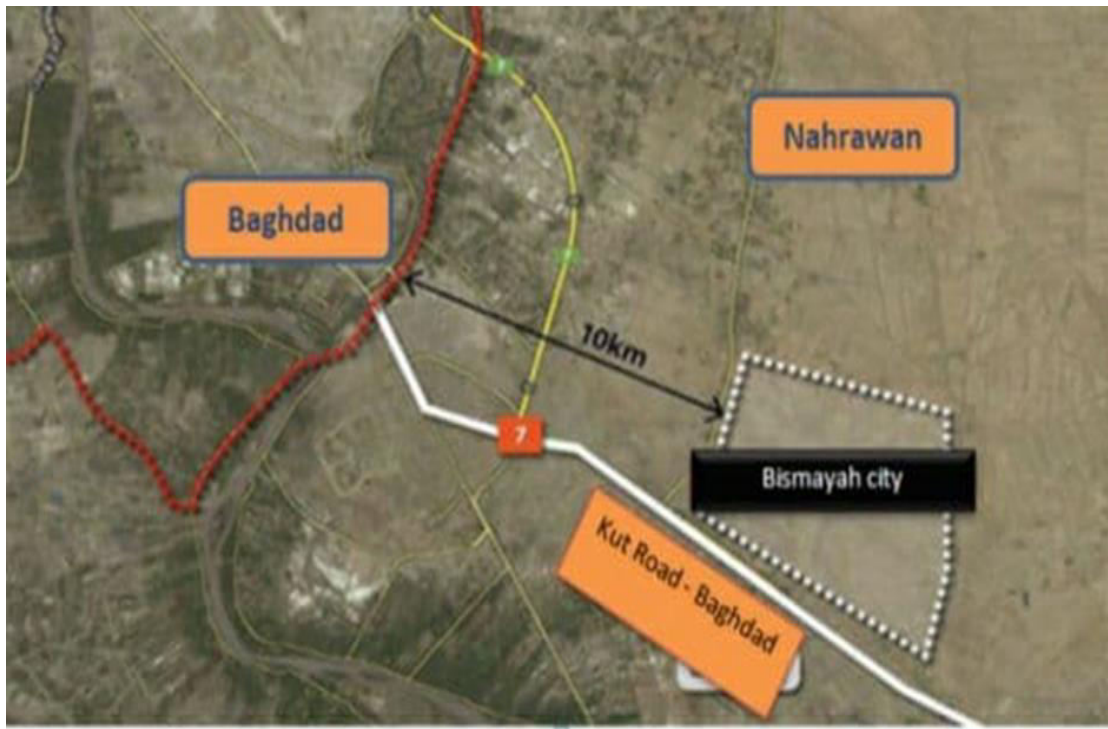


Figure 1. The location of the city of Basmiyah from the basic design of the city of Baghdad Source: Department of Engineer residing in the city of Basmiyah.





Form (2) illustrates the basic design of the city of Basm Source: Department of Engineer residing in Basmiyah C

Conclusions:

1. Housing is a shelter or protective vacuum that protects the human from external factors and provides him with his necessary needs, where the individual and the family spend most of the night and day in it, and the physiological, social and psychological comfort and productive efficiency of the members of the community depend on the extent to which the dwelling provides to achieve their desires and needs.
2. There is a clear symbiotic relationship between man and the environment in the traditional residential locality and that man and the environment are in a balanced position that responds to each other from here shows us the importance of drawing the characteristics of this environment responsive to its inhabitants and trying to apply it in our contemporary residential complexes.
3. There are a number of factors that play a key role in making residential communities attractive to the population and are placed in the hands of architects and specialists to benefit from them in reaching a residential complex that achieves humanity for residents in the internal solution of housing, the location of the dwelling, the entrances to residential buildings, the general site and the environmental environment.
4. The population attraction of the residential complex is a complex process involving several aspects (environmental, aesthetic and social values) and the loss of integration between them will lead to several problems resulting from the failure to meet the needs of the resulting population, which will lead to individuals taking the issue of providing them with adequate housing on their shoulders, which will result in other problems.

5. The process of meeting the housing need and designing residential complexes is ongoing and requires effective coordination between the efforts of all parties in order to achieve their objectives and make their results come as required.

6. The place consists of two elements of the material element is all that surrounds the individual and the moral element is the sense of place, man and place are linked to each other and the element of time is associated with them.

Recommendations:

1. The research recommends the need for social communication through social relations and the emphasis on individual women because they cannot live without social relationships and emphasizes friendly relationships and informal relationships.
2. Friendly relationships are increased by the spatial proximity on which the scheme is trying to focus.
3. 3-Sense or spatial affiliation can be achieved through social interaction that focuses on the process of influence and mutual influence.
4. Emphasizing parks that increase social interaction and thus increase spatial affiliation through functional integration by providing all amenities and providing living spaces that encourage those living to visit these gardens
5. The need to emphasize in the planning of residential complexes the homogeneity in the social and economic level among the inhabitants, which increases the opportunities for interaction and social communication.
6. Emphasizing privacy when planning residential complexes and not being penetrated by strangers by gradually planning streets and pool access outlets that give them the form and sense of security more than other places

7. . When planning housing complexes, consider the number of families who will live within these units in order to prevent overcrowding within the unit and not change the shape of the housing unit in the future.

8. Give the element of clarity more attention and stay as far away from the complexities in architectural forms that help to make it easier to access and make the place more efficient.

9. When planning open space (public park) the element of safety must be taken into account through the availability of visual surveillance opportunities that prevent or reduce accidents.

10. Do not increase the number of housing units within the residential complex for the purpose of maintaining privacy and getting to know strangers faster, which helps to increase the comfort of the residents within the complex.

REFERENCES

1. Lewis Maalouf, Al-Munajjid in Al-Lughah, 3rd Edition, Tahra, Iran Publishing and Distribution House, 1956
2. Ike Holtecrates, Dictionary of Anthropology and Folklore Terms, translated by Muhammad al-Jawahiri and Hassan al-Shami, Dar al-Ma'arif, Egypt, Cairo, 1972.
3. Al-Fatlawi Ali Abdul-Kadhim, Social and Political Stability in Jordan, Master Thesis, University of Jordan College of Graduate Studies, 1996.
4. Nicolas Tema Schiff, Sociology Theory, translated by Muhammad Al-Jawahry, and others, Dar Al Ma'aref, Cairo, 1993.
5. Samir Naim Ahmed, Theory in Sociology, 5th floor, Dar Al Maaref, Cairo, 1985.
6. Al-Alusi, Muadh, Amara Magazine, Issue Zero, Year One (Place and Figurative Rhetoric in Arab-Islamic Architecture and Arts), Baghdad, 1988
7. Chalabi, Sobeih Ali, Research (Urban Social Space Planning) presented to the Third Scientific Conference, Required Directions for Spatial Development, Urban and Regional

Planning Center, University of Baghdad, 2000.

8. Gaston Bachelard, The Aesthetics of Place, translated by Ghalib Halsal, The Book of Pens, Baghdad, 1980.

9. Al-Jabri, Muzaffar Ali, Urban Planning, General Entrance, Part 1, Ministry of Higher Education and Scientific Research, University of Baghdad, 1st Edition, Baghdad, 1980

10. Lynck, Kevin and Hack, Gary/site planning- 3d,ed-cambridge-MATpress-U-SA-1984.

11. Ibrahim Madkour and others, Dictionary of Social Sciences, Cairo, Egyptian General Book Authority, 1975.

12. Al-Ashaab, Khalis Hassan, The Arab City, The Arab Organization for Education, Culture and Public Affairs, Baghdad 1982

13. David, Architectural, press the psychology of place L.T.D.London 1974.

14. Hall, Edward T, the Hidden Dimension" Anchor Book, Double Day And company, Inc, Garden City, New York, 1966.

15. Towers, G. " An introduction to urban housing design: At Home In The City" architectural press, an imprint of Elsevier, Great Britain. 2005.

16. Andrew, " Building communities of place: Habitual movement around significant places" Journal of Housing and the Built Environment ,N.19 ,Kluwer Academic Publishers. Printed in the Netherlands. 2004.

17. Towers, G. " An introduction to urban housing design: At Home In The City" architectural press, an imprint of Elsevier, Great Britain. 2005