

Updated Integrated Safety Analysis of Ritlecitinib Over 72 Months In Patients With Alopecia Areata From the ALLEGRO Clinical Trial Program

Maryanne Senna,¹ Sameh Hanna,² Rie Ueki,³ Xingqi Zhang,⁴ Crystal Aguh,⁵ Bianca Maria Piraccini,^{6,7} Edward Nagy,⁸ Alexandre Lejeune,⁹ Mojgan Sadrarhami,¹⁰ Simon Chen,¹⁰ Robert Wolk¹¹

¹Lahey Hospital and Medical Center, Burlington, MA, USA; ²University of Toronto, Toronto, ON, Canada; ³Juntendo University, Tokyo, Japan; ⁴The First Affiliated Hospital, Sun Yat-sen University, Guangzhou, China; ⁵Department of Dermatology, Johns Hopkins Medicine, Baltimore, MD, USA; ⁶Dermatology Unit, IRCCS Azienda Ospedaliero-Universitaria di Bologna, Bologna, Italy; ⁷Department of Medical and Surgical Sciences, University of Bologna, Bologna, Italy; ⁸Pfizer Inc UK, Sandwich, Kent, UK; ⁹Pfizer Inc, Paris, France; ¹⁰Pfizer Inc, New York, NY, USA; ¹¹Pfizer Inc, Groton, CT, USA

SYNOPSIS

- Alopecia areata (AA) is an autoimmune disease characterized by patchy or complete nonscarring hair loss on the scalp, with or without additional loss of facial and/or body hair¹
- Ritlecitinib, an oral, selective dual inhibitor of JAK3/TEC family kinases, demonstrated efficacy and safety in patients ≥12 years of age with AA in the ALLEGRO phase 2b/3 study (NCT03732807) up to 48 weeks^{2,3}
- Ritlecitinib had an acceptable safety profile in patients ≥12 years of age with AA in two ALLEGRO phase 2a studies, the ALLEGRO-2b/3 study, and the ALLEGRO-LT study (NCT04006457) up to 24 months⁴

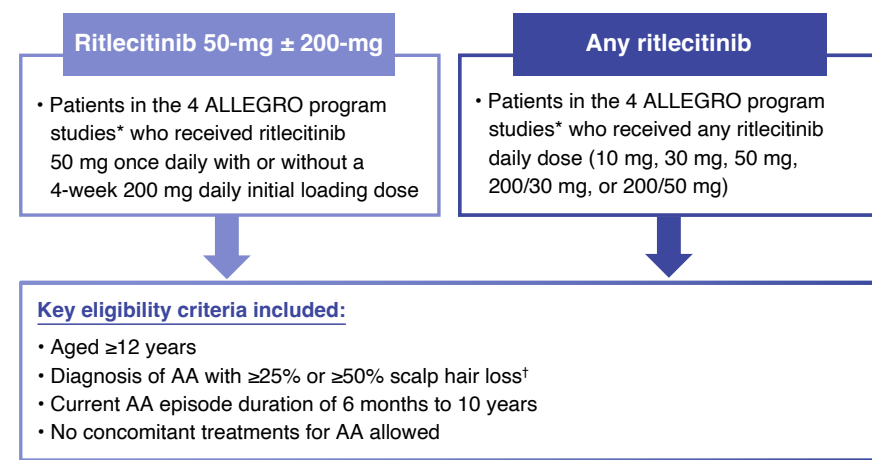
OBJECTIVE

- This updated integrated analysis of two phase 2a studies, the ALLEGRO phase 2b/3 study, and the ALLEGRO-LT phase 3 study investigated the long-term safety of ritlecitinib over 72 months in patients with AA

METHODS

Analysis populations

Figure 1. Analysis populations



AA, alopecia areata.
¹The 4 ALLEGRO studies included a Phase 2a safety study (ALLEGRO-2a safety, NCT04517864; completed), a Phase 2a study (ALLEGRO-2a, NCT02974868; completed), a Phase 2b/3 study (ALLEGRO-2b/3, NCT03732807; completed), and an ongoing, long-term open-label Phase 3 study (ALLEGRO-LT, NCT04006457; ongoing). Data cutoff for the ongoing ALLEGRO-LT was 25 June 2024.
²Patients in ALLEGRO-2a safety, ALLEGRO-2a, and ALLEGRO-2b/3 had ≥50% scalp hair loss; de novo patients in ALLEGRO-LT had ≥25% scalp hair loss.

Statistical analysis

- Safety data were integrated from the four phase 2 and phase 3 studies and summarized descriptively using counts and percentages for adverse events (AEs) and lab abnormalities in each cohort
- Events were evaluated from the start of the patients' first dose of ritlecitinib
- In the ritlecitinib 50-mg ± 200-mg group, events were evaluated from the time a patient started the 50 mg dose (or the 200 mg loading dose), as some patients received placebo or other ritlecitinib doses before switching to ritlecitinib 50 mg
- Study-size adjusted incidence rates of AEs were reported per 100 patient-years and are presented along with mid-p Gamma confidence intervals
- Data cutoff for the ongoing ALLEGRO-LT study was June 25, 2024

RESULTS

Baseline characteristics and patient disposition

- 1228 patients were included in the **ritlecitinib 50-mg ± 200-mg group**, and an additional 66 patients (1294) were included in the **any ritlecitinib group** (Table 1)

Table 1. Demographic and baseline characteristics

| | Ritlecitinib 50-mg ± 200-mg (N=1228)* | Any ritlecitinib (N=1294)* |
|---|---------------------------------------|----------------------------|
| Age, mean (SD), years | 33.8 (14.0) | 33.8 (14.0) |
| Female, n (%) | 780 (63.5) | 822 (63.5) |
| Race, n (%) | | |
| White | 861 (70.1) | 904 (69.9) |
| Asian | 270 (22.0) | 287 (22.2) |
| Black | 52 (4.2) | 55 (4.3) |
| Other | 28 (2.3) | 30 (2.3) |
| Weight, mean (SD), kg | 70.9 (17.9) | 70.9 (17.7) |
| AT/AU, n (%)[†] | 503 (41.0) | 534 (41.3) |
| AA disease duration, median (IQR), years | 6.7 (2.6-13.5) | 6.7 (2.7-13.5) |

AT, alopecia totalis; AU, alopecia universalis.
^{*}The analysis groups are not additive and are overlapping populations, with the any ritlecitinib group including all patients.
[†]AT/AU was defined as a baseline SALT score of 100 (complete scalp hair loss).

- At the time of data cutoff for the ongoing ALLEGRO-LT study, **56.7%** and **55.3%** of patients in the **ritlecitinib 50-mg ± 200-mg group** and **any ritlecitinib group**, respectively, were either ongoing or had completed the study (Table 2)
- The analysis groups are not additive and are overlapping populations, with the any ritlecitinib group including all patients

Table 2. Patient disposition

| | Ritlecitinib 50-mg ± 200-mg (N=1228)* | Any ritlecitinib (N=1294)* |
|---|---------------------------------------|----------------------------|
| Ongoing at the data cutoff[†] | 182 (14.8) | 182 (14.1) |
| Completed | 514 (41.9) | 533 (41.2) |
| Completed the study | 70 (5.7) | 89 (6.9) |
| Removed from study per protocol as commercial drug became available | 444 (36.2) | 444 (34.3) |
| Discontinued | 532 (43.3) | 579 (44.7) |
| Adverse event [‡] | 81 (6.6) | 90 (7.0) |
| Other [§] | 451 (36.7) | 489 (37.8) |

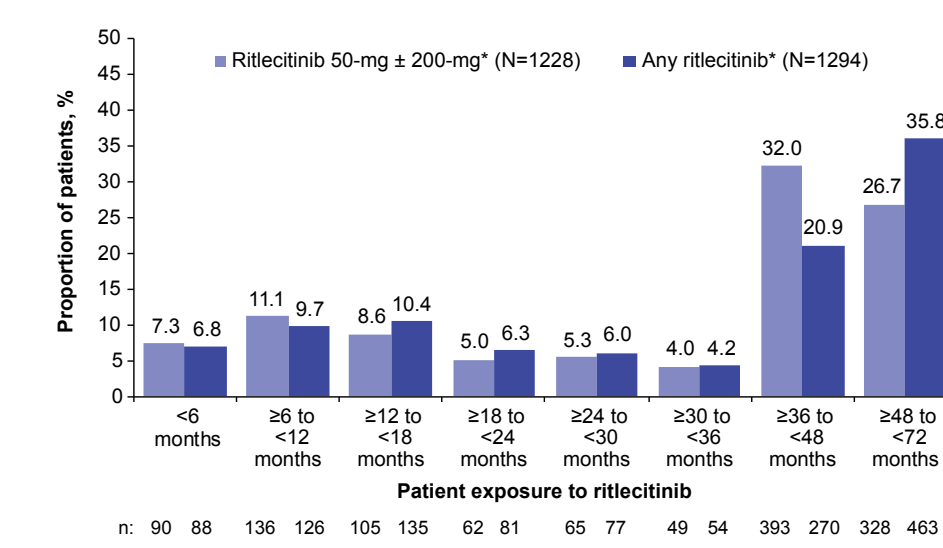
AE, adverse event; SAE, serious adverse event; SALT, Severity of Alopecia Tool.
^{*}The analysis groups are not additive and are overlapping populations, with the any ritlecitinib group including all patients.
[†]Data cutoff for the ongoing ALLEGRO-LT study was 25 June 2024.
[‡]Treatment discontinuation and participant withdrawal from the study were required in the study protocol for the following AEs: serious infections (defined as any infection requiring parenteral antimicrobial therapy or hospitalization for treatment or meeting other criteria that require the infection to be classified as a SAE), treatment-related SAEs, or other SAEs or severe AEs (at the discretion of the investigator or sponsor); clinically meaningful and treatment-emergent declines in hearing from baseline were discussed with the sponsor for possible withdrawal from study.
[§]Discontinued due to death, lack of efficacy, lost to follow-up, non-compliance with study drug, physician's decision, pregnancy, protocol deviation, study terminated by sponsor, withdrawal by subject, no longer meets eligibility criteria (i.e., adolescents who did not meet the protocol continuation criteria in ALLEGRO-LT [i.e., did not achieve a ≥50% improvement in SALT score at Month 3 from baseline in ALLEGRO 2b/3, or a SALT score of ≤20 at Month 6]), or other.

Exposure to study drug

- Median duration of exposure was **1197 days** (range: 453-1371) in the **50-mg ± 200-mg group** and **1204 days** (range: 453-1444) in the **any-ritlecitinib group**. Total patient-years of exposure was **3261.5** and **3539.5** in the **50-mg ± 200-mg** and **any-ritlecitinib** groups, respectively

- 68%** and **67%** of patients had ≥24 months of exposure to ritlecitinib, and **59%** and **57%** had ≥36 months of exposure in the **50-mg ± 200-mg** and **any-ritlecitinib** groups, respectively (Figure 2)

Figure 2. Patient exposure to ritlecitinib



^{*}The analysis groups are not additive and are overlapping populations, with the any ritlecitinib group including all patients.

Adverse events overview

- 1070 (87.1%)** and **1158 (89.5%)** patients experienced AEs and **84 (6.8%)** and **88 (6.8%)** of patients experienced serious AEs (SAEs) in the **50-mg ± 200-mg** and **any-ritlecitinib** groups, respectively (Table 3)
- There were 2 deaths (due to breast cancer and due to acute respiratory failure/cardiopulmonary arrest) in the ALLEGRO clinical trial program; both deaths were assessed by the investigator as unrelated to study treatment
- The cumulative safety data were similar to those previously reported,⁴ and no new safety signals were identified (Table 3)

Table 3. Overview of AEs in the ritlecitinib 50-mg ± 200-mg and any ritlecitinib groups

| AE | Ritlecitinib 50-mg ± 200-mg (N=1228)* | | Any ritlecitinib (N=1294)* | |
|--------------------------------------|---------------------------------------|--------------------------|----------------------------|--------------------------|
| | n (%) | IR (95% CI) [†] | n (%) | IR (95% CI) [†] |
| AE | 1070 (87.1) | 148.08 (139.39-157.17) | 1158 (89.5) | 167.90 (158.43-177.79) |
| SAE | 84 (6.8) | 2.56 (2.05-3.16) | 88 (6.8) | 2.47 (1.99-3.03) |
| Death | 2 (0.2) | 0.06 (0.01-0.21) | 2 (0.2) | 0.05 (0.01-0.19) |
| Most frequent AEs[‡] | | | | |
| SARS-CoV-2 test positive | 242 (19.7) | 8.40 (7.38-9.52) | 250 (19.3) | 7.97 (7.03-9.02) |
| Headache | 231 (18.8) | 7.97 (6.98-9.05) | 272 (21.0) | 8.89 (7.87-9.99) |
| Nasopharyngitis | 175 (14.3) | 5.81 (4.99-6.73) | 212 (16.4) | 6.69 (5.83-7.64) |
| Upper respiratory tract infection | 167 (13.6) | 5.49 (4.70-6.38) | 194 (15.0) | 5.90 (5.11-6.78) |
| Pyrexia | 134 (10.9) | 4.28 (3.59-5.06) | 138 (10.7) | 4.06 (3.42-4.79) |
| Cough | 131 (10.7) | 4.27 (3.58-5.06) | 134 (10.4) | 3.95 (3.32-4.67) |
| Acne | 126 (10.3) | 4.08 (3.41-4.85) | 150 (11.6) | 4.58 (3.89-5.37) |
| Oropharyngeal pain | 119 (9.7) | 3.82 (3.17-4.56) | 125 (9.7) | 3.66 (3.05-4.34) |

AE, adverse event; CI, confidence interval; IR, incidence rate; PY, patient-years; SAE, serious adverse event.
^{*}The analysis groups are not additive and are overlapping populations, with the any ritlecitinib group including all patients.
[†]Study-size adjusted results per 100 PY and mid-p gamma intervals.
[‡]8 most frequent AEs in the any-ritlecitinib cohort, by preferred term.

- Compared with the May 30, 2022 data cutoff,⁴ there were:
 - Two new events of multi-dermatomal herpes zoster adjudicated as opportunistic infections
 - Three new events of malignancy excluding nonmelanoma skin cancer (2 adjudicated as cervical dysplasia and 1 as intraductal proliferative breast lesion)
 - Six new events of nonmelanoma skin cancer (5 adjudicated as basal cell carcinoma and 1 as squamous cell carcinoma)
 - Four additional participants with cardiovascular events (acute myocardial infarction [2 participants], myocardial infarction [1 participant], and cerebrovascular accident [1 participant]) adjudicated as major adverse cardiovascular events
- The incidence rates for AEs of special interest (Table 4) were similar to those previously reported,⁴ with no change to the overall safety profile of ritlecitinib

Table 4. AEs of special interest

| | Ritlecitinib 50-mg ± 200-mg (N=1228)* | | Any ritlecitinib (N=1294)* | |
|--|---------------------------------------|--------------------------|----------------------------|--------------------------|
| | n (%) | IR (95% CI) [†] | n (%) | IR (95% CI) [†] |
| Serious infections[‡] | 20 (1.6) | 0.61 (0.38-0.93) | 22 (1.7) | 0.61 (0.38-0.91) |
| Opportunistic infections[‡] | 3 (0.2) | 0.09 (0.02-0.26) | 3 (0.2) | 0.08 (0.02-0.23) |
| Herpes zoster | 32 (2.6) | 0.99 (0.68-1.38) | 34 (2.6) | 0.95 (0.67-1.32) |
| Malignancies (excl. NMSC)[§] | 9 (0.7) | 0.27 (0.12-0.5) | 10 (0.8) | 0.27 (0.13-0.49) |
| NMSC[§] | 9 (0.7) | 0.26 (0.12-0.49) | 9 (0.7) | 0.25 (0.11-0.46) |
| MACE | 7 (0.6) | 0.20 (0.08-0.40) | 7 (0.5) | 0.19 (0.08-0.39) |
| VTE[§] | 1 (<0.1) | 0.03 (0.00-0.16) | 1 (<0.1) | 0.03 (0.00-0.14) |

CI, confidence interval; IR, incidence rate; MACE, major adverse cardiovascular event; NMSC, nonmelanoma skin cancer; PY, patient-years; VTE, venous thromboembolic event.
^{*}The analysis groups are not additive and are overlapping populations, with the any ritlecitinib group including all patients.
[†]Study-size adjusted results per 100 PY and mid-p gamma intervals.
[‡]Serious infections were defined as any serious adverse event in the infections and infestations system organ class.
[§]Adjudicated safety events.
^{||}MACE was defined as a composite of death from cardiovascular causes, nonfatal myocardial infarction, or nonfatal stroke.

Laboratory abnormalities

- Three participants had elevated creatine phosphokinase reported as treatment-emergent adverse events of rhabdomyolysis, considered by the investigator to be related to a recently started new exercise regimen or physical activity. All 3 events were mild and considered not related to the study intervention, the study intervention was not interrupted, and the events were resolved

CONCLUSIONS

- Treatment with ritlecitinib in patients with AA was well tolerated over 72 months and 3539.5 patient-years of exposure, and safety was consistent with previously reported data.^{4,5} There is no change to the general safety profile of ritlecitinib

REFERENCES

1. Islam N, et al. *Autoimmun Rev*. 2015;14:81-89.
2. King B, et al. *Lancet*. 2023;401:1516-1529.
3. Hardisky M, et al. *Pediatr Dermatol*. 2023. doi:10.1011/1515-1538.
4. King B, et al. *Am J Clin Dermatol*. 2024;25:299-314.
5. Senna M, et al. *AAO*. 2024. Poster No. 52338.

DISCLOSURES

This study was sponsored by Pfizer Inc. M Senna: Member on a scientific advisory board and/or consultant for Eli Lilly, BiologicsMD, Pfizer Inc, Arena Pharmaceuticals, Inmagine, Kintor, and L'Oréal; speaker for Eli Lilly and Pfizer Inc; receiving research funding from Eli Lilly, Concert, Clarity, Folicia, LED Pharma, and Santis; member on the board of directors for the Scarring Alopecia Foundation and American Hair Research Society; and co-director of the CorEvitas AA Registry. S Hanna: Clinical trialist for AbbVie, Lilly, Lumavis, and Pfizer Inc and received honoraria for speaking/consulting from AbbVie, Lilly, and Pfizer Inc. R Ueki: Clinical trial investigator for Pfizer Inc. X Zhang: No conflict of interest. C Aguh: Consultant and/or advisor for Pfizer Inc, Lilly, Myovant Sciences, and Galderma; member of advisory boards for Orlaplex and CPSkin Health; and editor of the UpToDate section on central centrifugal cicatricial alopecia, for which she receives royalties. Her research program is supported by an educational grant through Janssen. BM Piraccini: Received honoraria for participation in advisory boards, being a speaker, and/or being a consultant for Amgen, Pfizer Inc, Eli Lilly, Pierre Fabre-Dorsey, Cantabria-Dal Cooper, Dermos O'Neil, SDN, and Legacy Healthcare. A Lejeune, M Sadrarhami, S Chen, R Wolk, and E Nagy: Employees of and hold stock or stock options in Pfizer Inc. Third-party medical writing assistance provided by Nucleus Global, was funded by Pfizer Inc.

