

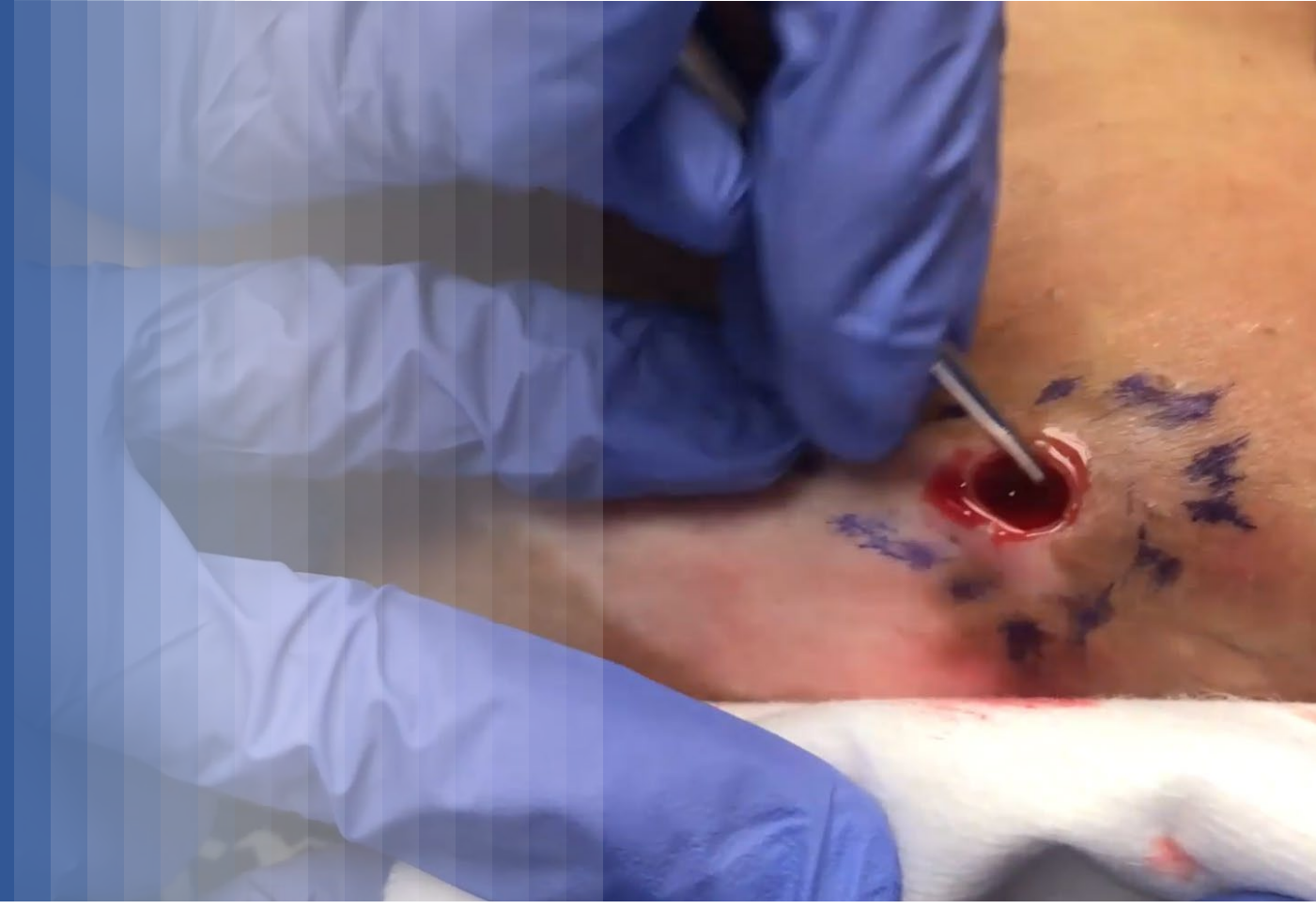
# Shaping the Future of Holistic Hidradenitis Suppurativa Care: The Power of Multimodal Continuing Medical Education

Authors: Jeremy Levine, BS<sup>1</sup>; Alexis Ann Karandrea, PhD<sup>1</sup>; Noah Goldfarb, MD<sup>2</sup>; T.J. Chao, MPAS, PA-C<sup>3</sup>; Jennifer Hsiao, MD<sup>4</sup>; Hadar Lev-Tov, MD<sup>5</sup>; Sumera Ackbarali, PhD, CHCP, MLSCM(ASCP)HTL<sup>CM</sup><sup>1</sup>; Sonia Schursky, MD<sup>1</sup>

Affiliations: <sup>1</sup>CMEsquared, Vail, CO; <sup>2</sup>University of Minnesota, Minneapolis, MN; <sup>3</sup>Atlanta North Dermatology, Atlanta, GA; <sup>4</sup>University of Southern California, Los Angeles, CA; <sup>5</sup>University of Miami, Miami, FL



This educational initiative was supported by educational grants from Incyte, Novartis Pharmaceutical Corporation, and UCB, Inc.



## INTRODUCTION

Hidradenitis suppurativa (HS) profoundly impacts patients' physical and psychosocial well-being, and optimal management requires a combination of pharmacologic and surgical interventions.

- All members of the HS care team (advanced practitioners, APs [physician assistants, PAs, and nurse practitioners, NPs] and physicians) should be well-equipped to provide this holistic care to patients.
- Three biologic therapies (adalimumab, secukinumab, and bimekizumab) were approved by the U.S. Food and Drug Administration in the past decade. Several therapies with various mechanisms of action are in late-stage clinical development.<sup>1-4</sup>
- Multimodal learning methods (e.g., visual, auditory, kinesthetic) and repeated exposure to content maximize engagement and retention, especially in adult learners.<sup>5</sup>

To meet the educational need of preparing the HS care team to provide holistic care, CMEsquared® partnered with the HS Foundation to develop a multimodal, educational initiative focused on holistic HS management.

## METHODOLOGY

### Three Activities to Facilitate Repeated Exposure to Content:

All activities accredited for 1.50 *AMA PRA Category 1 Credits™* by University of Nevada, Reno School of Medicine

- Live Conference (February 2024):** WC Miami 2024
- Live Conference (May 2024):** FC PA & NP 2024
- Enduring Activity (July 2024-2025):** <https://dermsquared.org/cme-education>

**Live:** Two 90-minute workshops with hands-on component (limited seating, separate registration)

**Enduring:** 90-minute, chapterized video recording of live session

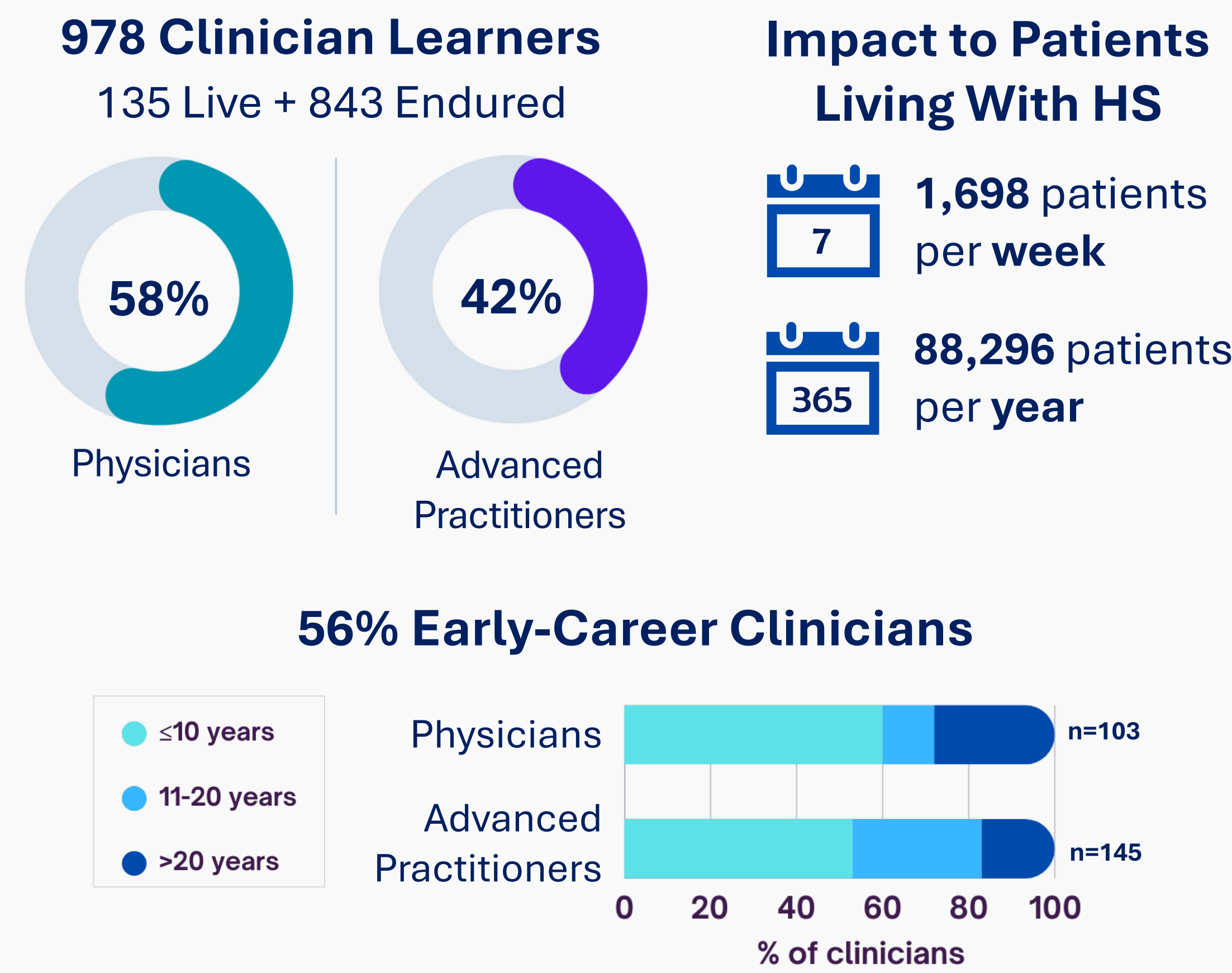
### Learning Approaches Utilized in Workshops:

- Didactic lecture on HS diagnosis & guidelines | clinical data for approved & emerging therapies | in-office surgical procedures, wound care & pain management
- Patient perspectives on the treatment journey and impact on quality of life
- Video demonstration (pre-recorded) of surgical procedures (e.g., punch deroofing and deroofing for persistent plaques/tunnels)
- Hands-on, simulation workshop on surgical procedures using food models of HS nodules & tunnels in the skin (Figures 1 & 2)

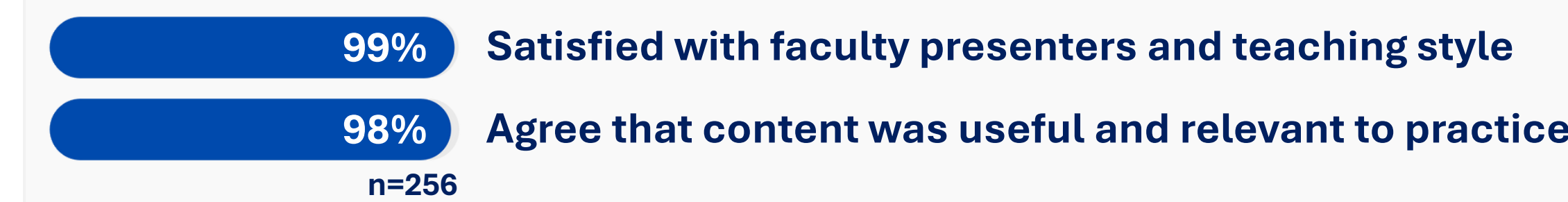
### Outcomes Data Collected:

- Demographics, engagement, changes in knowledge and competence (measured via pre- and immediate post-activity questions), intended practice changes, and practice barriers
- Statistical tests of significance (Chi-square) applied to comparisons of individual questions (pre vs post)

## Learner Demographics:



## Learner Feedback:

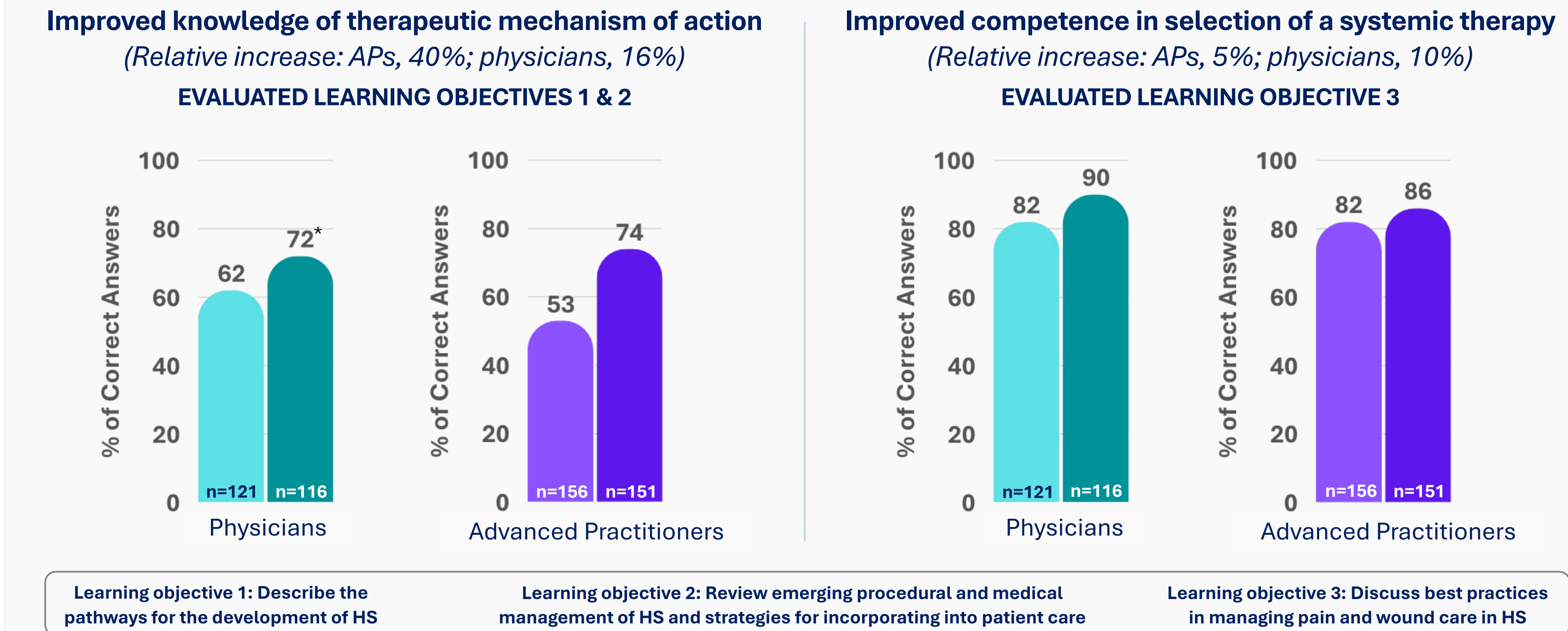


## In-Session Workshop Demonstration:

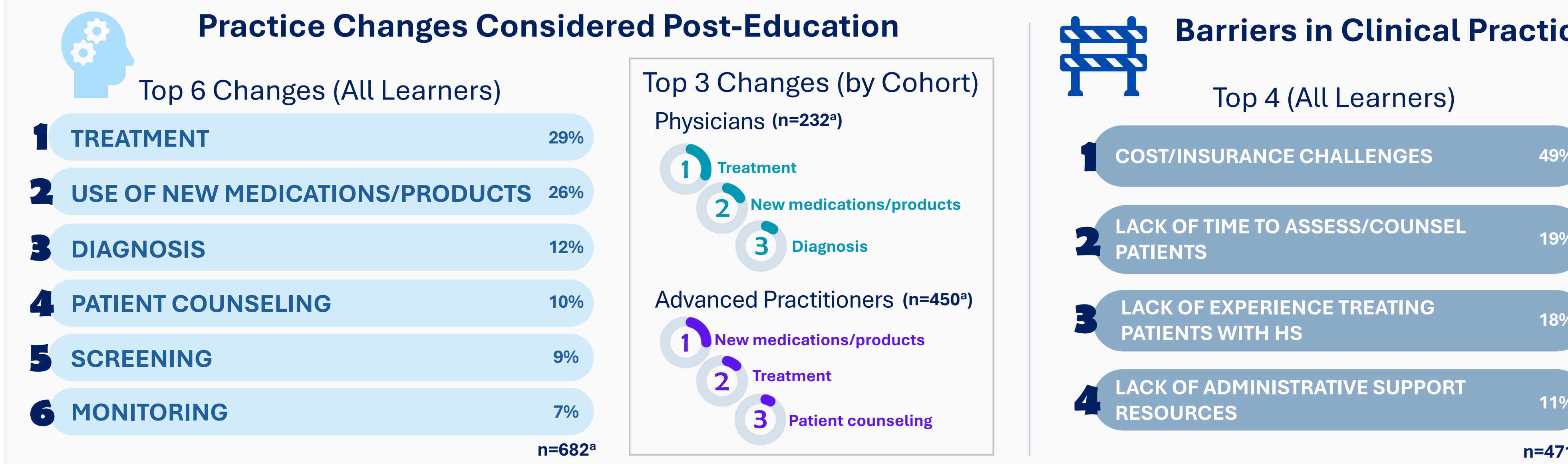


## RESULTS

### Changes in Knowledge & Competence by Learner Cohort:



### Anticipated Clinical Practice Changes and Barriers:



## CONCLUSION

- Multimodal HS education delivered by a multidisciplinary faculty panel enhanced knowledge, competence, and consideration of meaningful practice changes in holistic HS care, especially among dermatology clinicians early in their careers
- Prioritization of practice changes reflect roles of each cohort on the care team
- Practice barriers may pose a challenge to effective patient assessment/counseling and incorporation of new therapies into care
- This educational method could be applied to other dermatologic conditions, where appropriate, to 1) equip clinicians with knowledge and skills needed to improve patient outcomes, and 2) obtain valuable clinician insights

## REFERENCES

1. Adalimumab Prescribing Information. [https://www.accessdata.fda.gov/drugsatfda\\_docs/label/2011/125057o02761a1.pdf](https://www.accessdata.fda.gov/drugsatfda_docs/label/2011/125057o02761a1.pdf)
2. Bimekizumab Prescribing Information. [https://www.accessdata.fda.gov/drugsatfda\\_docs/label/2024/761151s005s006s00761a1.pdf](https://www.accessdata.fda.gov/drugsatfda_docs/label/2024/761151s005s006s00761a1.pdf)
3. Secukinumab Prescribing Information. [https://www.accessdata.fda.gov/drugsatfda\\_docs/label/2023/125504o066/761349s004b1.pdf](https://www.accessdata.fda.gov/drugsatfda_docs/label/2023/125504o066/761349s004b1.pdf)
4. Krueger JE et al. *Br J Dermatol.* 2024;190:145-162.
5. Bonham A, Brian T. *Scope: Contemporary Research Topics, Learning & Teaching.* Ottago Polytechnic Press; 2024.