



eISSN 2279-7483

<https://www.pagepressjournals.org/index.php/vl/index>

**Publisher's disclaimer.** E-publishing ahead of print is increasingly important for the rapid dissemination of science. The **Early Access** service lets users access peer-reviewed articles well before print / regular issue publication, significantly reducing the time it takes for critical findings to reach the research community.

These articles are searchable and citable by their DOI (Digital Object Identifier).

**Veins and Lymphatics** is, therefore, e-publishing PDF files of an early version of manuscripts that have undergone a regular peer review and have been accepted for publication, but have not been through the typesetting, pagination and proofreading processes, which may lead to differences between this version and the final one. The final version of the manuscript will then appear in a regular issue of the journal.

E-publishing of this PDF file has been approved by the authors.

*All legal disclaimers applicable to the journal apply to this production process as well.*

Veins and Lymphatics 2025 [online ahead of print]

To cite this article:

Costantino Eretta, Fabio Di Pumpo, Sofia Bizzarri, et al. Does lymphoscintigraphy have a role in the diagnosis and management of lipedema?. *Veins and Lymphatics*. 2025;14:14438.

doi:10.4081/vl.2025.14438

 ©The Author(s), 2025  
Licensee PAGEPress, Italy

*The publisher is not responsible for the content or functionality of any supporting information supplied by the authors. Any queries should be directed to the corresponding author for the article.  
All claims expressed in this article are solely those of the authors and do not necessarily represent those of their affiliated organizations, or those of the publisher, the editors and the reviewers.  
Any product that may be evaluated in this article or claim that may be made by its manufacturer is not guaranteed or endorsed by the publisher.*

## Does lymphoscintigraphy have a role in the diagnosis and management of lipedema?

Costantino Eretta,<sup>1</sup> Fabio Di Pumpo,<sup>1</sup> Sofia Bizzarri,<sup>1</sup> Valerio Duca,<sup>2</sup> Claudio Bianchi<sup>3</sup>

<sup>1</sup>S.S. Chirurgia dei Linfatici, Chirurgia ad alta Complessità, Ospedale San Bartolomeo, Sarzana;

<sup>2</sup>S.C. Medicina Nucleare, Ospedale Sant'Andrea, La Spezia;

<sup>3</sup>S.S.D. Chirurgia Multispecialistica, Ospedale San Bartolomeo, Sarzana, Italy;

**Correspondence:** Costantino Eretta, S.S. Chirurgia dei Linfatici, Chirurgia ad alta Complessità, Ospedale San Bartolomeo, Sarzana, Italy.

E-mail: [eretta.costantino@gmail.com](mailto:eretta.costantino@gmail.com)

**Key words:** lipedema, lipo-lymphedema, lymphoscintigraphy, differential diagnosis, Fat Pain Syndrome, conservative treatment, liposuction risk.

**Contributions:** all the authors made a substantive intellectual contribution. All the authors have read and approved the final version of the manuscript and agreed to be held accountable for all aspects of the work.

*The publisher is not responsible for the content or functionality of any supporting information supplied by the authors. Any queries should be directed to the corresponding author for the article. All claims expressed in this article are solely those of the authors and do not necessarily represent those of their affiliated organizations, or those of the publisher, the editors and the reviewers. Any product that may be evaluated in this article or claim that may be made by its manufacturer is not guaranteed or endorsed by the publisher.*

**Conflict of interest:** the authors declare no potential conflict of interest.

**Funding:** none.

**Ethics approval and consent to participate:** all procedures performed in studies involving human participants were in accordance with the ethical standards of the Institutional Research Committee and with the 1964 Helsinki declaration and its latest amendment.

**Informed consent:** informed consent was obtained from the patient included in this study.

**Patient's consent for publication:** the patients gave their written consent to use their personal data for the publication of this case report and any accompanying images.

**Availability of data and materials:** all data generated or analyzed during this study are included in this published article.

*The publisher is not responsible for the content or functionality of any supporting information supplied by the authors. Any queries should be directed to the corresponding author for the article.  
All claims expressed in this article are solely those of the authors and do not necessarily represent those of their affiliated organizations, or those of the publisher, the editors and the reviewers.  
Any product that may be evaluated in this article or claim that may be made by its manufacturer is not guaranteed or endorsed by the publisher.*

## **Abstract**

Lipedema is a chronic and progressive connective tissue disorder characterized by symmetric accumulation of adipose tissue, predominantly in the lower limbs, often associated with pain, easy bruising, and reduced response to lifestyle interventions. Despite increasing recognition, the condition remains frequently misdiagnosed or mistaken for obesity or lymphedema.

To investigate the role of lymphoscintigraphy in the diagnostic and therapeutic management of patients with clinically confirmed lipedema and assess its potential utility in detecting associated lymphostatic disorders.

A retrospective observational study was conducted on 108 patients clinically diagnosed with lipedema between January 2019 and August 2023. Among them, 31 patients underwent lymphoscintigraphy due to suspected mixed pathology or surgical candidacy. Data on lymphatic involvement were collected and analyzed to determine correlations with clinical staging.

In 58% of the selected cases, lymphoscintigraphy revealed no detectable lymphatic abnormalities. Of these, approximately 70% showed latent compensatory lymphatic patterns. The remaining 39% had confirmed alterations of the superficial and/or deep lymphatic system, suggesting a mixed clinical picture (lipo-lymphedema) with potential surgical contraindications.

*The publisher is not responsible for the content or functionality of any supporting information supplied by the authors. Any queries should be directed to the corresponding author for the article.  
All claims expressed in this article are solely those of the authors and do not necessarily represent those of their affiliated organizations, or those of the publisher, the editors and the reviewers.  
Any product that may be evaluated in this article or claim that may be made by its manufacturer is not guaranteed or endorsed by the publisher.*

Lymphoscintigraphy is not essential for routine diagnosis of lipedema, which remains clinical. However, it is valuable in identifying cases with coexisting lymphostatic components and guiding surgical decisions. These findings support a multidisciplinary and individualized approach to diagnosis and treatment.

*The publisher is not responsible for the content or functionality of any supporting information supplied by the authors. Any queries should be directed to the corresponding author for the article.  
All claims expressed in this article are solely those of the authors and do not necessarily represent those of their affiliated organizations, or those of the publisher, the editors and the reviewers.  
Any product that may be evaluated in this article or claim that may be made by its manufacturer is not guaranteed or endorsed by the publisher.*

## **Introduction**

Lipedema is a chronic disorder of loose connective tissue, clinically characterized by a particular form of edema associated with a significant increase in adipose tissue, predominantly affecting the lower limbs. The condition typically begins at the level of the iliac crest and progressively extends to the ankles in advanced stages, leading to increased body weight. A disproportional distribution of adipose tissue is generally observed, primarily affecting the lower extremities; the upper limbs are also often involved, while the abdomen is usually less affected by fat accumulation. More rarely, cases may present with a symmetric distribution of both edema and adipose tissue, without disproportion between the upper and lower limbs and the abdomen.<sup>1</sup>

The etiology of lipedema remains unknown. However, it predominantly affects women, with epidemiological studies estimating a prevalence of at least 11% among all women.<sup>1</sup> It typically manifests during periods of hormonal fluctuation, such as puberty, pregnancy, or menopause.<sup>2</sup>

Although rare, lipedema has been reported in male patients, usually associated with low levels of male sex hormones or liver dysfunction. A clear gender prevalence exists, and a genetic predisposition is highly likely. A study published in the International Journal of Molecular Sciences confirmed the genetic basis of the disease, identifying a mutation in the *AKR1C1* gene in a family affected by non-syndromic primary lipedema.<sup>3</sup>

*The publisher is not responsible for the content or functionality of any supporting information supplied by the authors. Any queries should be directed to the corresponding author for the article.  
All claims expressed in this article are solely those of the authors and do not necessarily represent those of their affiliated organizations, or those of the publisher, the editors and the reviewers.  
Any product that may be evaluated in this article or claim that may be made by its manufacturer is not guaranteed or endorsed by the publisher.*

Recent research has also focused on extracellular microRNAs isolated from the stromal vascular fraction, comparing patients with lipedema to healthy controls. Results showed significant alterations in seven microRNAs in lipedema patients, potentially involved in adipogenesis, angiogenesis, inflammation, and fatty acid metabolism — all central processes in the disease's pathophysiology.<sup>2,3</sup>

Despite growing scientific interest in recent years, especially regarding its pathophysiology, high-level evidence remains limited, making it difficult to establish definitive diagnostic and therapeutic algorithms. Most guidance relies on expert consensus or narrative reviews, and the condition remains largely underdiagnosed and mismanaged. Even in clinical settings, confusion persists between lipedema and other conditions such as lymphedema, lipodystrophy, cellulite, or simply obesity. This misclassification often results in ineffective therapeutic approaches that fail to address the disease's specific characteristics.

## **Materials and Methods**

This study is a retrospective, single-center observational analysis conducted between January 2019 and August 2023.

The pathology affects both males and females, but it is usually predominantly female patients who come to the doctor's attention due to greater attention to aesthetics and localized adiposity.

*The publisher is not responsible for the content or functionality of any supporting information supplied by the authors. Any queries should be directed to the corresponding author for the article.  
All claims expressed in this article are solely those of the authors and do not necessarily represent those of their affiliated organizations, or those of the publisher, the editors and the reviewers.  
Any product that may be evaluated in this article or claim that may be made by its manufacturer is not guaranteed or endorsed by the publisher.*

A total of 108 female patients with a clinical and ultrasonographic diagnosis of lipedema were evaluated at our vascular and lymphatic outpatient clinic.

Among these, a selected subgroup of 30 patients underwent lymphoscintigraphy. The indication for lymphoscintigraphy was based on the presence of clinical features suggestive of a coexisting lymphostatic condition (e.g., asymmetry, progression of swelling, frequent infections, or suspicion of lipo-lymphedema), or in cases where surgical intervention (e.g., liposuction) was being considered and a precise evaluation of the lymphatic system was deemed essential to avoid iatrogenic complications.<sup>4-6</sup>

The inclusion criteria were: i) female patients  $\geq 18$  years of age; ii) clinically confirmed diagnosis of lipedema (using the International Lipoedema Association, ILA, 2022 criteria), and iii) no prior lymphatic surgery or malignancy.

The exclusion criteria were: i) isolated lymphedema without clinical signs of lipedema; ii) previous radiotherapy or lymph node dissection.

The diagnosis of lipedema was established through clinical examination, supported by Doppler ultrasound in all patients to exclude chronic venous insufficiency and to assess subcutaneous tissue characteristics. Diagnostic confirmation adhered to the ILA criteria.<sup>7</sup>

Lymphoscintigraphy was carried out through subcutaneous administration of technetium-99m-labeled nanocolloid, with acquisition protocols including whole-body, static, and dynamic imaging.

Lymphatic function was categorized as positive (clear evidence of lymphatic damage) (“YES”), negative (no abnormal findings) (“NO”), or latent (compensatory changes in lymphatic flow) (“NO LAT”).<sup>8-11</sup>

The “latent” category included cases showing minor asymmetry of tracer distribution, delayed but complete lymphatic transport, or visualization of collateral lymphatic pathways, without dermal backflow. These findings were interpreted as compensatory changes in lymphatic flow.

All patients provided informed consent. The study complies with the Declaration of Helsinki.

### **Radiopharmaceutical and acquisition protocol**

The radiopharmaceutical used in our center was <sup>99m</sup>Tc-human serum albumin nanocolloid (particle size 20-80 nm). A total activity of 1–2 mCi (37-74 MBq) was administered, divided into aliquots of 0.2-0.4 mCi in injection volumes of 0.2–0.3 mL. Imaging was performed using a dual-head large-field gamma camera equipped with LEHR collimators. Whole-body imaging: Acquired in anterior and posterior projections (speed 10 cm/min, matrix 128×128, zoom 1). For lower limbs, acquisition extended from the feet to the liver; for upper limbs, from the neck to the liver.

Acquisition of dynamic images (60 s/frame, 64×64 matrix, zoom 1) on the lymph glandular districts occurs for about 20-30 min after radiopharmaceutical administration. At the end

*The publisher is not responsible for the content or functionality of any supporting information supplied by the authors. Any queries should be directed to the corresponding author for the article.  
All claims expressed in this article are solely those of the authors and do not necessarily represent those of their affiliated organizations, or those of the publisher, the editors and the reviewers.  
Any product that may be evaluated in this article or claim that may be made by its manufacturer is not guaranteed or endorsed by the publisher.*

of the dynamic study, acquisition of total body images (speed 10 cm/min) is performed in anterior and posterior projections after 30 min (early acquisition) and 2h (delayed acquisitions) in case of poor radiotracer migration. Static planar views (300 s, 128×128 matrix, zoom 1) on the injection sites and on the loco-regional lymphoglandular districts can be taken after 3-4 h.

Both superficial and deep lymphatic systems were studied during the same session.

Static planar imaging: Acquired in anterior and posterior projections, matrix 128×128, zoom 1.33, for 5 minutes.

Dynamic imaging: Acquired in anterior and posterior projections, matrix 64×64, zoom 1, with 60 sec/frame for a total duration of 30 minutes.

Deep circulation injection: For the study of the deep circulation, one aliquot (37 MBq in injection volumes of 0.2-0.3 mL) of radiopharmaceutical is injected at the level of the deep palmar fascia for the upper limbs or the deep plantar fascia for the lower limbs. Following injection, patients were instructed to perform physical exercise for 20 minutes.

Superficial circulation injection: Two aliquots of the radiopharmaceutical were injected (25G needle) subdermally on the dorsum of the hands (2nd and 3rd metacarpal spaces) or feet (2nd and 3rd metatarsal spaces). After injection, patients were again instructed to perform physical exercise for 20 minutes.

## **Results**

*The publisher is not responsible for the content or functionality of any supporting information supplied by the authors. Any queries should be directed to the corresponding author for the article.  
All claims expressed in this article are solely those of the authors and do not necessarily represent those of their affiliated organizations, or those of the publisher, the editors and the reviewers.  
Any product that may be evaluated in this article or claim that may be made by its manufacturer is not guaranteed or endorsed by the publisher.*

A total of 108 female patients were evaluated, of whom 30 underwent lymphoscintigraphy.

The average age was 47,5 years (Standard Deviation,  $SD \pm 14,87$  years).

Among these 30, 18 patients (60%) had negative lymphoscintigraphy results, of which 11 (36.7%) showed latent signs (NO LAT).<sup>6,11</sup> Twelve patients (40%) had positive findings consistent with lymphatic alterations.<sup>7</sup>

These results suggest that in more than half of the patients with suspected mixed pathology, lymphoscintigraphy did not show overt lymphatic damage, supporting eligibility for surgical intervention with minimal lymphatic risk (Figure 1-3, Table 1).<sup>6,12</sup>

## Discussion

The findings of this study confirm the central role of clinical evaluation in diagnosing lipedema, as supported by international guidelines and expert consensus.<sup>7,13,14</sup> However, they also highlight the complexity and heterogeneity of the disease, which often overlaps with other conditions such as obesity and lymphedema.<sup>5,12</sup>

Lymphoscintigraphy, while not necessary for diagnosis in typical cases, emerges as a valuable tool in identifying patients with latent or overt lymphatic dysfunction, especially when surgical intervention is being considered.

The detection of lymphatic abnormalities in 40% of the patients who underwent lymphoscintigraphy suggests a significant prevalence of mixed pathologies such as lipolymphedema.<sup>11</sup>

This is clinically relevant, as lymphatic compromise can influence both prognosis and treatment strategy. Surgical procedures like liposuction, although effective in volume reduction and symptom relief, carry the risk of damaging already vulnerable lymphatic structures. Therefore, lymphoscintigraphy can be instrumental in risk stratification and surgical planning.<sup>6</sup>

The presence of latent lymphatic compensation in a majority of "negative" cases also invites further investigation into the subclinical dynamics of lymphatic overload in lipedema. It raises the question of whether lipedema represents a spectrum disorder with varying degrees of lymphatic involvement rather than a purely adipose-based pathology.<sup>3,10</sup> Additionally, the psychological burden and quality-of-life impact of lipedema remain underexplored. Awareness remains low even among healthcare providers, as highlighted by recent surveys.<sup>13</sup> Patients often face years of misdiagnosis, inappropriate treatments, and stigma, which can exacerbate both physical and emotional suffering. Future studies should integrate psychosocial metrics and long-term follow-up to better understand the holistic outcomes of different treatment strategies.<sup>12,14</sup>

## **Conclusions**

Lipedema is a complex and often misunderstood adipose tissue disorder with clinical, functional, and psychosocial consequences. While its diagnosis remains primarily clinical, imaging modalities such as lymphoscintigraphy provide valuable insight in select cases,

*The publisher is not responsible for the content or functionality of any supporting information supplied by the authors. Any queries should be directed to the corresponding author for the article.  
All claims expressed in this article are solely those of the authors and do not necessarily represent those of their affiliated organizations, or those of the publisher, the editors and the reviewers.  
Any product that may be evaluated in this article or claim that may be made by its manufacturer is not guaranteed or endorsed by the publisher.*

particularly where mixed pathologies are suspected or surgical interventions are planned.<sup>6,7</sup> Our findings support the integration of lymphoscintigraphy as a second-level investigation in patients with suspected lipo-lymphedema or when evaluating surgical candidacy. Importantly, the results underscore the necessity of a multidisciplinary approach involving vascular specialists, radiologists, surgeons, endocrinologists, and mental health professionals.<sup>12,15,16</sup>

Ultimately, the effective management of lipedema requires early diagnosis, individualized care plans, and ongoing research into its pathophysiology, treatment outcomes, and patient-reported quality of life.

Further research into lipedema's pathophysiology, genetics, and patient-centered outcomes is needed to refine diagnostic tools and optimize care.<sup>1,8,9</sup>

## References

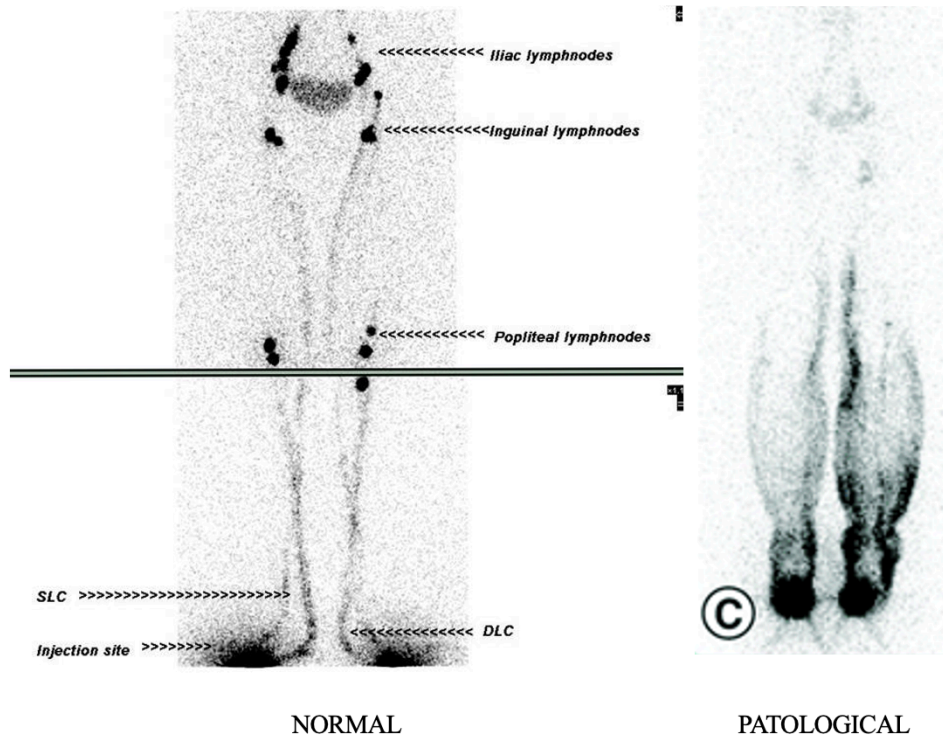
1. Michelini S, Chiurazzi P, Marino V, et al. Aldo-Keto Reductase 1C1 (AKR1C1) as the first mutated gene in a family with nonsyndromic primary lipedema. *Int J Mol Sci* 2020;21:6264.
2. Priglinger E, Strohmeier K, Weigl M, et al. SVF-derived extracellular vesicles carry characteristic miRNAs in lipedema. *Sci Rep* 2020;10:7211.
3. Strohmeier K, Hofmann M, Jacak J, et al. Multi-level analysis of adipose tissue reveals the relevance of perivascular subpopulations and an increased endothelial permeability in early-stage lipedema. *Biomedicines* 2022;10:1163.
4. Hirsch T, Schleinitz J, Marshall M, Faerber G. Is the differential diagnosis of lipedema by means of high-resolution ultrasonography possible? 2018. Available from: <https://www.thieme-connect.de/products/ejournals/pdf/10.12687/phleb2431-4-2018.pdf?articleLanguage=en>
5. Herbst KL, Hansen EA, Salinas LMC, et al. Survey outcomes of lipedema reduction surgery in the United States. *PRS Glob Open* 2021;9:e3807.
6. Wright TF, Herbst KL. Lymphatic injuries after suction lipectomy in women with lipedema. *Am J Case Rep* 2022;23:e935016.
7. Brorson H, Corda D, Greco F, et al. Report of the Diagnosis Working Group. 2022. Available from: [https://theila.net/wp-content/uploads/2024/09/pdf\\_news.pdf](https://theila.net/wp-content/uploads/2024/09/pdf_news.pdf)

*The publisher is not responsible for the content or functionality of any supporting information supplied by the authors. Any queries should be directed to the corresponding author for the article.  
All claims expressed in this article are solely those of the authors and do not necessarily represent those of their affiliated organizations, or those of the publisher, the editors and the reviewers.  
Any product that may be evaluated in this article or claim that may be made by its manufacturer is not guaranteed or endorsed by the publisher.*

8. Chakraborty A, Crescenzi R, Usman TA, et al. Indications of peripheral pain, dermal hypersensitivity, and neurogenic inflammation in patients with lipedema. *Int J Mol Sci* 2022;23:10313.
9. Grigoriadis D, Sackey E, Riches K, et al. Investigation of clinical characteristics and genome associations in the 'UK Lipoedema' cohort. *PLoS One* 2022;17:e0275889.
10. von Atzigen J, Burger A, Grünherz L, et al. A comparative analysis to dissect the histological and molecular differences among lipedema, lipohypertrophy and secondary lymphedema. *Int J Mol Sci* 2023;24:7591.
11. Kruppa P, Gohlke S, Łapiński K, et al. Lipedema stage affects adipocyte hypertrophy, subcutaneous adipose tissue inflammation and interstitial fibrosis. *Front Immunol* 2023;14:1174208.
12. Herbst KL, Kahn LA, Iker E, et al. Standard of care for lipedema in the United States. *Phlebology* 2021;36:779-96.
13. Hansdorfer-Korzon R, Czerwińska M, Teodorczyk J, Szamotulska J. Assessment of lipoedema awareness among Polish women: an online survey study. *BMC Womens Health* 2023;23:457.
14. International Consensus document. Lipoedema: a paradigm shift and consensus. *J Wound Care* 2020;29:S1-44.
15. Halk AB, Damstra RJ. First Dutch guidelines on lipedema using the international classification of functioning, disability and health. *Phlebology* 2017;32:152-9.

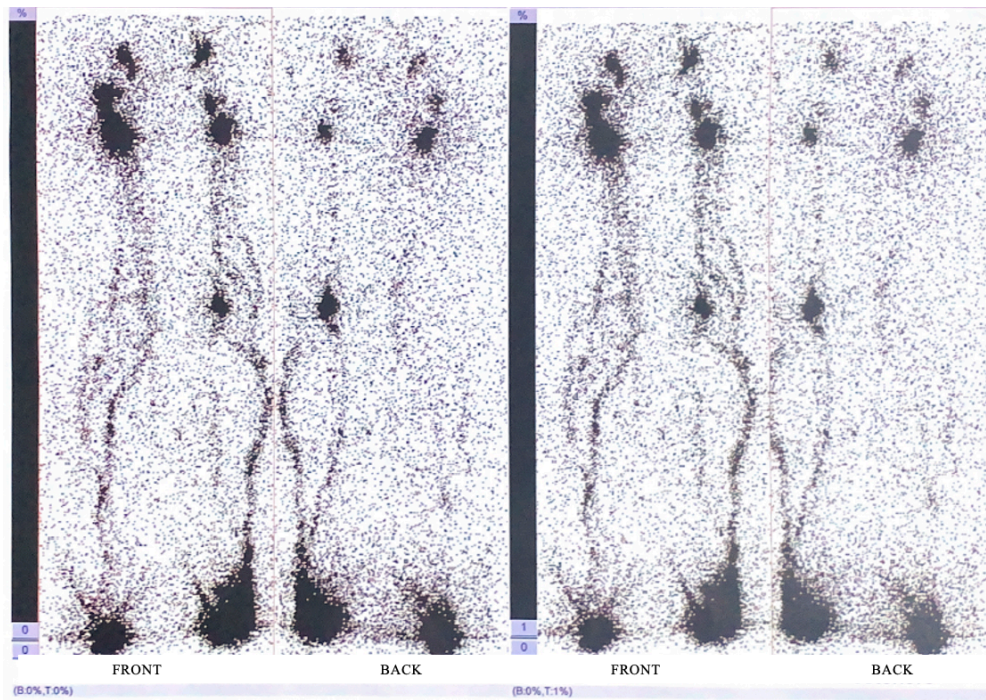
*The publisher is not responsible for the content or functionality of any supporting information supplied by the authors. Any queries should be directed to the corresponding author for the article.  
All claims expressed in this article are solely those of the authors and do not necessarily represent those of their affiliated organizations, or those of the publisher, the editors and the reviewers.  
Any product that may be evaluated in this article or claim that may be made by its manufacturer is not guaranteed or endorsed by the publisher.*

16. Herpertz U. Krankheitsspektrum des Lipödems an einer Lymphologischen Fachklinik - Erscheinungsformen, Mischbilder und Behandlungsmöglichkeiten. *Vasomed* 1997;5:301-7.



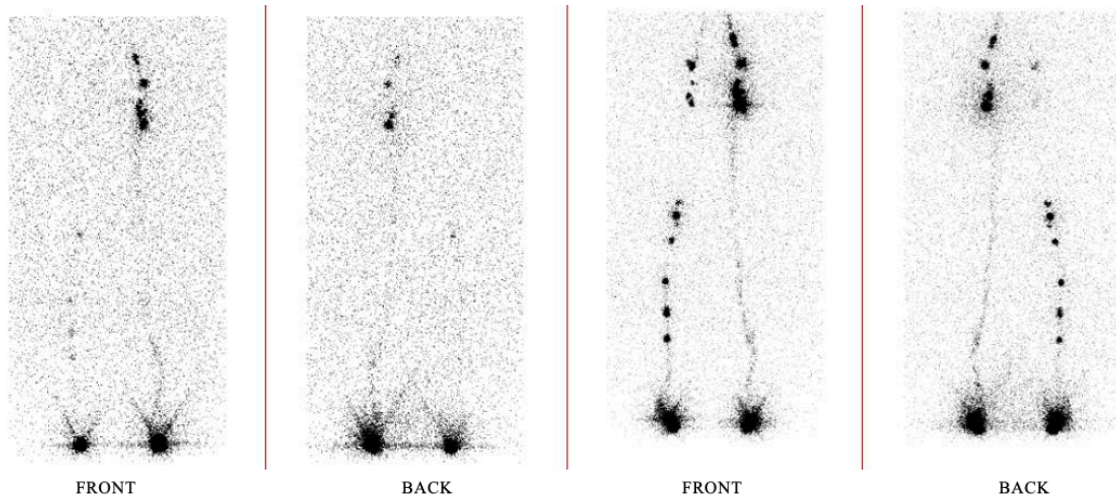
**Figure 1.** Segmental superficial and deep lymphoscintigraphy of the lower limbs: normal findings on the left side and pathological alterations on the right side.

*The publisher is not responsible for the content or functionality of any supporting information supplied by the authors. Any queries should be directed to the corresponding author for the article. All claims expressed in this article are solely those of the authors and do not necessarily represent those of their affiliated organizations, or those of the publisher, the editors and the reviewers. Any product that may be evaluated in this article or claim that may be made by its manufacturer is not guaranteed or endorsed by the publisher.*



**Figure 2.** Lymphoscintigraphy showing latent lymphatic alterations.

*The publisher is not responsible for the content or functionality of any supporting information supplied by the authors. Any queries should be directed to the corresponding author for the article.  
All claims expressed in this article are solely those of the authors and do not necessarily represent those of their affiliated organizations, or those of the publisher, the editors and the reviewers.  
Any product that may be evaluated in this article or claim that may be made by its manufacturer is not guaranteed or endorsed by the publisher.*



**Figure 3.** Lymphoscintigraphy showing latent lymphatic alterations.

*The publisher is not responsible for the content or functionality of any supporting information supplied by the authors. Any queries should be directed to the corresponding author for the article.  
All claims expressed in this article are solely those of the authors and do not necessarily represent those of their affiliated organizations, or those of the publisher, the editors and the reviewers.  
Any product that may be evaluated in this article or claim that may be made by its manufacturer is not guaranteed or endorsed by the publisher.*



**Figure 4.** Examples of lower limb lipedema at different disease stages.

*The publisher is not responsible for the content or functionality of any supporting information supplied by the authors. Any queries should be directed to the corresponding author for the article.  
All claims expressed in this article are solely those of the authors and do not necessarily represent those of their affiliated organizations, or those of the publisher, the editors and the reviewers.  
Any product that may be evaluated in this article or claim that may be made by its manufacturer is not guaranteed or endorsed by the publisher.*

Table 1.

Patient ID	Age	Sex	Stage	Lymphoscintigraphy
A.J.	41	F	2	NO LAT
A.T	74	F	2	YES
A.K.	38	F	2	NO LAT
B.A.	28	F	2	NO LAT
C.B	45	F	3	NO
C.J.	27	F	2	NO LAT
D.SM.S	54	F	2	YES
D.S.F.	49	F	2	YES
D.G.	69	F	3	YES
C.V.	58	F	3	NO
D.S.	44	F	3	YES
D.A.	49	F	3	YES
F.D.	51	F	3	NO
F.R.	39	F	3	NO LAT
F.G.	32	F	1	YES
G.D.	35	F	2	NO LAT
L.S.	24	F	1	NO LAT
L.A.	68	F	LIPO-	YES
L.A.	58	F	3	YES
L.S.	51	F	3	YES
M.M.	50	F	1	NO
M.V.	34	F	2	YES
M.A.	24	F	1	NO LAT
M.G.	79	F	2	NO LAT
M.T.	29	F	1	NO
M.S.	52	F	2	NO LAT
N.V.	44	F	1	NO
P.C.V.	60	F	3	NO LAT
P.C.	57	F	3	YES
R.G.	62	F	2	NO LAT

*The publisher is not responsible for the content or functionality of any supporting information supplied by the authors. Any queries should be directed to the corresponding author for the article.  
All claims expressed in this article are solely those of the authors and do not necessarily represent those of their affiliated organizations, or those of the publisher, the editors and the reviewers.  
Any product that may be evaluated in this article or claim that may be made by its manufacturer is not guaranteed or endorsed by the publisher.*

*The publisher is not responsible for the content or functionality of any supporting information supplied by the authors. Any queries should be directed to the corresponding author for the article.  
All claims expressed in this article are solely those of the authors and do not necessarily represent those of their affiliated organizations, or those of the publisher, the editors and the reviewers.  
Any product that may be evaluated in this article or claim that may be made by its manufacturer is not guaranteed or endorsed by the publisher.*