

Meet the WAESOL Board

OFFICERS



President
DAVID MARTIN



President-Elect
ROSEMARY COLÓN



Past President
CHRISTINA MITMA MOMONO



Treasurer
KRISSEY WILCOX



Executive Director
JOAN JOHNSTON NELSON



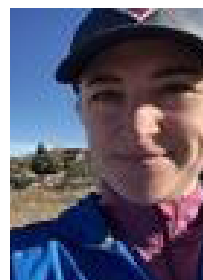
MEMBERS-AT-LARGE



Ana Kear



Margaret Diehl



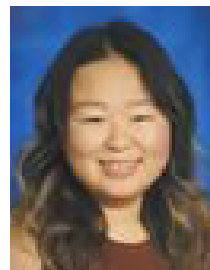
Catherine Kelly



James Hunter



Ali Asiri



Jenny Ahn

All WAESOL Board members are volunteers who are also professionals in the TESOL field.

Learn more about the board members on the [WAESOL website](#).

Consider joining the board. Elections take place in November.

Visit the [Nominations & Elections](#) page.
