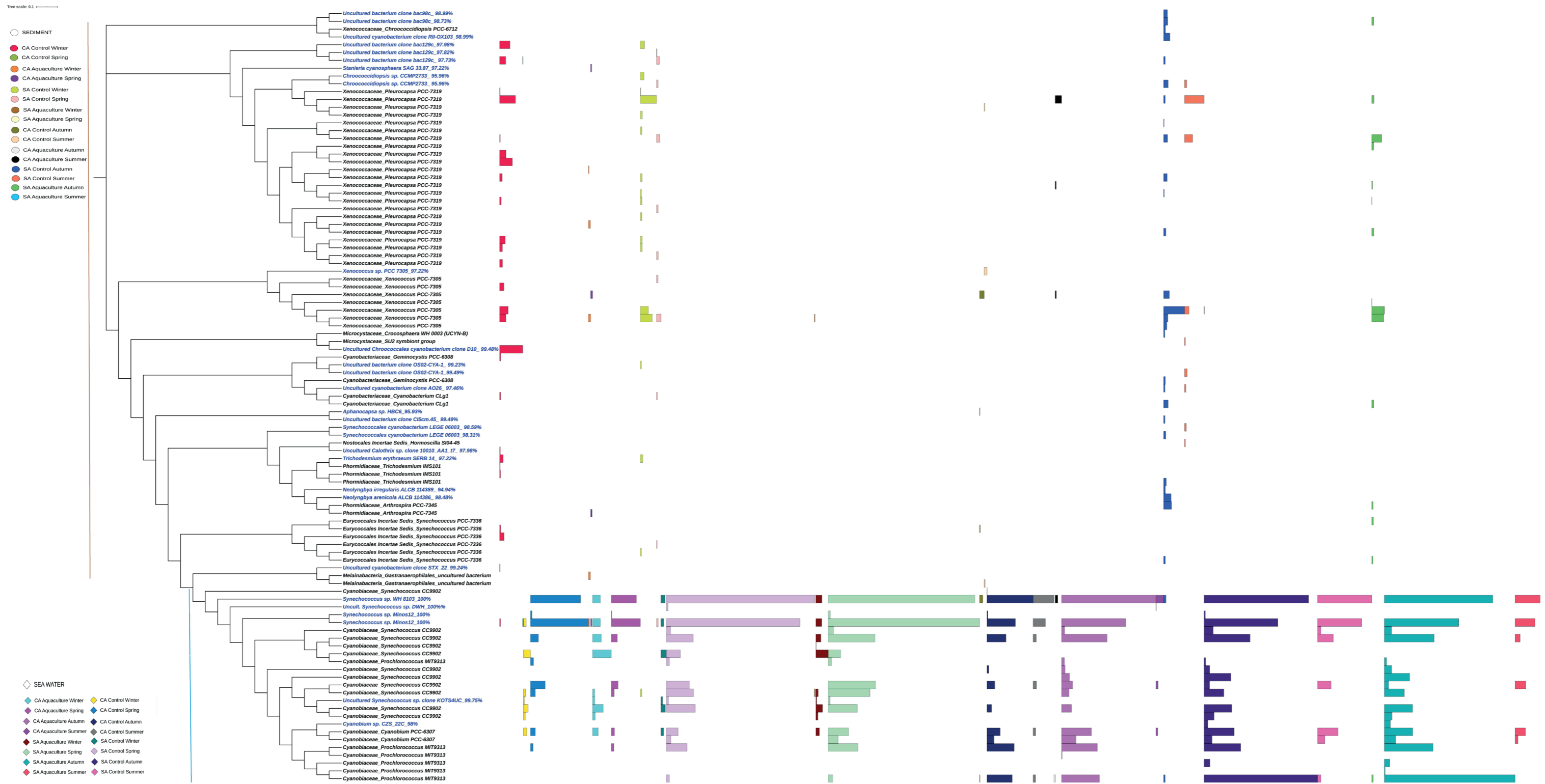


On-line Suppl. Tab. 1. Results of principal component analysis.

	PC1	PC2	PC3
Eigenvalues	3.50	2.61	1.75
% variance explained	31.9	23.7	15.9
Cumulative % explained	31.9	55.6	71.5
Eigenvectors			
Secchi Depth	-0.153	-0.085	-0.527
Turbidity	-0.238	-0.332	0.347
Salinity	0.088	0.403	-0.261
TDS	0.095	0.477	-0.269
Temperature	-0.425	0.265	0.178
pH	-0.267	-0.130	-0.423
DO ₂	0.351	-0.406	-0.155
O ₂ %	-0.314	-0.328	-0.014
N	-0.428	0.071	-0.112
P	0.040	0.350	0.445
SiO ₂	-0.495	0.077	-0.001



On-line Suppl. Fig. 1. Cladogram displaying grouping of 100 cyanobacterial ASVs, with addition of multi value bar chart of sample frequencies in different ASVs (CA – central Adriatic, SA – southern Adriatic, Aquaculture – site type under the influence of fish farms, Control – control site type; à - sea water sample type, O – sediment sample type). Leaf labels are automatically assigned by SILVA database (black letters), or NCBI GenBank database BLAST search hit results (blue letters).