



**RIO GRANDE CONE TECTONO-STRATIGRAPHIC MODEL –
BRAZIL: SEISMIC SEQUENCES**

Castillo., L.L.A¹, Kazmierczak, T. de S.², and Chemale., Jr., F.³

¹ *Profesor, curso de Geofísica, Departamento de Geociencias – Universidad Nacional de Colombia Bogota.*

² *Schlumberger Ltd, Brazil.*

³ *Professor, Instituto de Geociências, Universidade Federal do Rio Grande do Sul, Porto Alegre – Brazil.*

Corresponding author Email: lacastillo@unal.edu.co, thaisk@povo.net and farid.chemale@ufrgs.br

RESUMEN

Análisis sísmicos integrados con técnicas de interpretación, procesamiento, información de velocidades y datos geofísicos permiten modelar diferentes rasgos de tipo tectónico, estructural o geomorfológico. Este trabajo se constituye en una primera aproximación a un modelo tridimensional de un rasgo geomorfológico ubicado en el fondo oceánico. El modelo inicial comprende una configuración bidimensional de una grilla interpretada a partir de secciones sísmicas llevadas a un volumen tridimensional, esto mediante la concepción de una aproximación dos y medio dimensional. Además de un cambio de configuración, se hizo un análisis de atributos sobre las imágenes de las secciones y se determinaron las características presentes desde un área de la plataforma, hasta el *offshore* del sudeste Brasileño. El rasgo geomorfológico a tratar es conocido como el Cono de Rio Grande, el cual pudo ser caracterizando con sus principales estructuras tectónicas y estratigráficas, mediante la cartografía y modelamiento tridimensional del subsuelo, con la integración geológica, geofísica y geomorfológica. La geomorfología del cono, se ve influenciada por procesos gravitacionales, corrientes de fondo, estructuras de tipo tectónico y composición litológica, como sus principales controladores que están presentes a partir del Neógeno. Así, a partir de la interpretación sísmica pueden ser extractados diferentes estructuras tectónicas, sedimentarias y geoformas, por ejemplo presencia de fallas, pliegues, canales, *levee* naturales, contornitos, etc.

Palabras clave: Sismoestratigrafía, Modelamiento, tectonoestratigrafía, interpretación geofísica.

Manuscript receiver: February 03th, 2009.

Accepted for publication: June 01th, 2009.

ABSTRACT

The seismic analyses integrated to interpretation techniques, processing, velocity model and geophysical data have permitted modeling different tectonic, stratigraphy or geomorphology features. This paper is the first approach to geomorphological features for a three dimensional depth model. The initial model comprises a seismic section grid with bidimensional configuration converted to three dimensional subvolumes. These include a two and half dimensional model. Also, an attribute analyses in image section is necessary to determine the most relevant characteristics. The geomorphologic feature corresponds to the named Rio Grande Cone, which is characterized by principal tectonic and stratigraphic structures. That is why mapping and subsurface three dimensional modeling, with geology, geophysical and geomorphologic integration is necessary. The cone geomorphology is characterized by gravitational processes, bottom currents, tectonic structures and lithological compositions which are the principal factors that have been influencing it since Neogene. Then, the seismic interpretation could extract different tectonic, sedimentary structures and geoforms, for instance, faults, folds, channels, natural levee, contourites, etc.

Key words: Seismic stratigraphy, Modeling, Tectono stratigraphy, Geophysical interpretation.

Introduction

Seismic stratigraphy method has improved since development of acquisition, processing and interpretation processes. They include loading, processing, visualization and modeling tools that have allowed the manipulation of format data, screen and the creation of a high quality model. Data could be transformed to different configurations like 2D, 2.5D and 3D.

The first concepts related to seismostratigraphy interpretation refer to geometry and stratal terminations (Mitchum *et al.* 1994). In the Brazil's Southeast area, the Rio Grande Cone has been influenced by tectonic episodes since the Cretaceous until the Recent. Two and half dimensional seismic interpretation on some sections along the surface and the subsurface show the presence of some features located on shelf. They include a fault system, geoforms and folds that influence the slope, proximal and distal shelf and the sea floor. The tectono-stratigraphic analysis make the description of some geological aspects in subsurface possible. As a consequence, a geological model was obtained by means of the seismic information and a velocity function within seismic interpretation (Sarta, 2004).

The geological mapping was obtained by means of the seismic stratigraphic interpretation on the Rio

Grande Cone. This interpretation allowed the division of the deep sedimentary package into several sequences and a driven-model from a sequential stratigraphy classification could be made. To define seismic units (chronostratigraphic unit referred as sequences), the first step was to define the unconformities and then recognize the unit according to the facies, the seismic expression and the attributes analyses.

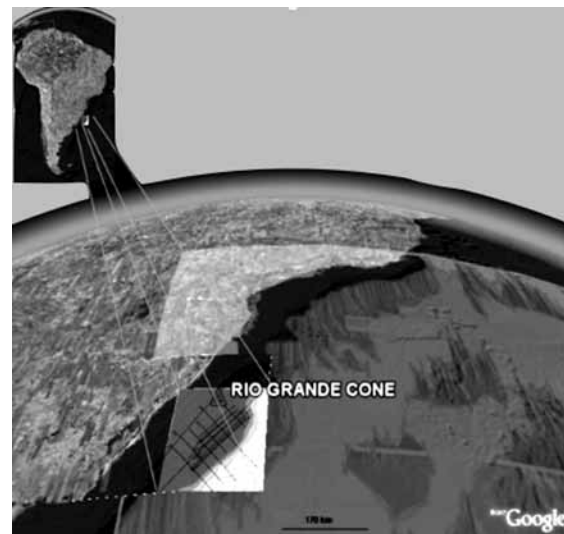


Figure 1. Rio Grande Cone location within the Pelotas Basin – Brazil (Modified from Google Earth).

Geomorphology, geophysics and computational disciplines are powerful tools that could be integrated in order to obtain a 3D approach by using a driven-model method. This model allows the generation of a more realistic feature of the subsurface geomorphology. In this preliminary research a 3D model obtained from seismic interpretation in the Rio Grande Cone will be documented.

Location

Rio de la Plata and Rio Grande Cone were formed during the Maastrichtian/Danian Atlantic transgression in South America. The continental shelf and the depression are flooded by the sea. They are typical examples of geofoms can be seen on the Uruguay and Brazilian platforms. The Rio Grande Cone (RGC) is a relevant geofom that extends 28900 km² on the Brazilian offshore (Figure 1). It is a subsurface landscape semicircular-shaped noticeable feature that comprises a transition from shelf to slopes with a high amount of shale supply. Its source is the highlands and the Brazilian craton.

Seismic Data

In this analysis, the data corresponds to 3577km of seismic lines that were acquired from Brazil's ANP, and other old printed sections (Fontana, 1996; Porto, 2007). Structural and stratigraphy models were generated by means of software modules: Petrel 2008, Matlab (v. 7.0.1), Voxler, Seismic Unix and open source seismic interpretation software (OpendTect V3.03e).

The dominant frequency seismic information could be obtained from attributes analyses, i.e. an instantaneous frequency map, which exhibits a 30-35Hz dominant frequency and 90 μ s/ft slowness in the area. A 4ms sample rate, 5 to 10s record length and 28ms windows time analyses are comprised. In order to establish the wavelength, geophysical parameters on Pelotas Basin whose average velocity is 3050 m/s and frequency of 30Hz need to be considered. The expression for wavelength is given by:

$$\lambda = V/f. \quad (1)$$

Then, $\lambda = 3048\text{m/s} / 40 \text{ Hz} = 76,2\text{m}$, by the $\lambda/4 \Rightarrow 76,2\text{m}/4 = 19,05\text{m} \Rightarrow 62,5 \text{ feet}$.

These calculations determined that the obtained thickness for a minimum layer is between 20 to 100 feet (7 to 30m), otherwise it is not tuned. The seismic resolution limit in section data establishes what can and cannot be seen on subsurface.

Attribute Analysis

All information extracted from seismic data is known as Attribute and the interpretation depends on the combination of attributes, the quality of data, and the interpreter's experience. The Attribute is used to highlight subsurface features in order to delimit horizons, zones, seismic facies, and geometries by increasing the ability to define structural models and stratigraphic analysis. The advantage of seismic data is the multiplicity, areal extension and depth penetration as it permits obtaining information from *seismic attributes* (Taner *et al.* 1977, 1979). Seismic attributes are calculated from at least two trace input and provide information about lateral variations in set data. An Attribute is not restricted to structural or stratigraphic analysis; it has been used to estimate petrophysic properties and geomorphological elements by combining them with well data. Historical development of seismic tools and techniques improve the execution of the different stages of seismic stratigraphic analysis. Seismic stratigraphy and attribute analysis could be considered as tools for geomorphological, geological and geophysical modeling (Figure 2).

Seismic attributes application

Seismic attributes were introduced in the seventy's first to display seismic data, then to obtain different derived seismic measures, and finally turned into an analytical tool to predict lithological characterization.

Although a direct relationship between the attributes and the geological characteristics of the

RIO GRANDE CONE TECTONO-STRATIGRAPHIC MODEL – BRAZIL: SEISMIC SEQUENCES

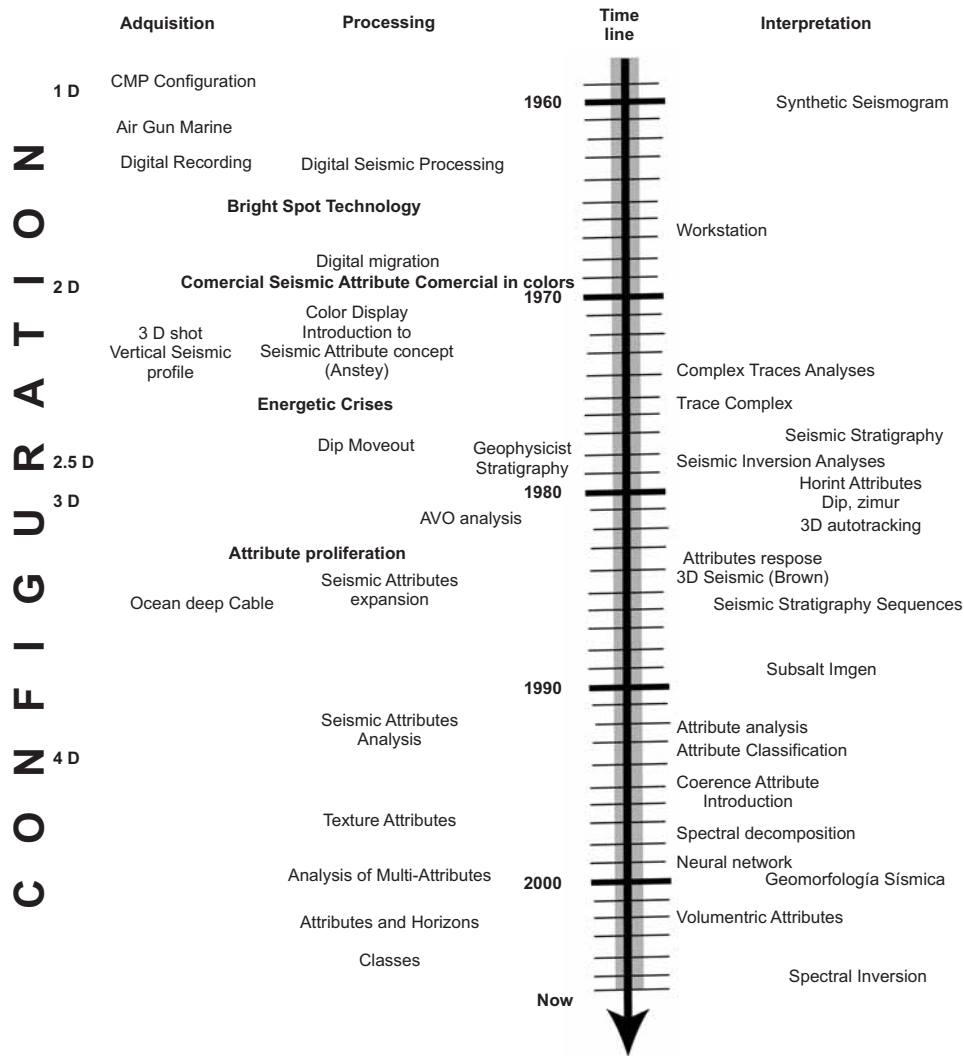


Figure 2. Historical development of the seismic method: acquisition, processing, interpretation and modeling (Adapted from Liner, 2008; Chopra and Marfurt, 2005 and Friedman, 1998).

Earth has not been established, almost all analyses describe several uses of seismic attributes i.e. classes' classification discriminator.

Recently, the seismic attribute application includes surfaces, horizon, geomorphology mapping, sequence stratigraphic interpretation, modeling subsurface and geobody information. They all have been accepted as tools to interpret old strata and processes through the use of modern survey (Posamentier and Kolla, 2003). Then seismic geomorphology is an evolving field, building on the his-

toric approaches of seismic stratigraphy, sequential stratigraphy, fluvial geomorphology and three dimensional modeling. Seismic attributes are used in structural, stratigraphy and geomorphological interpretation (Figure 3). An example of this is the improvement of image resolution thanks to the sophistication of computational systems that allow determining reservoir properties and their lateral continuity. Figure 3. Dip seismic line display of Seismic Attribute analysis and seismic stratigraphy interpretation

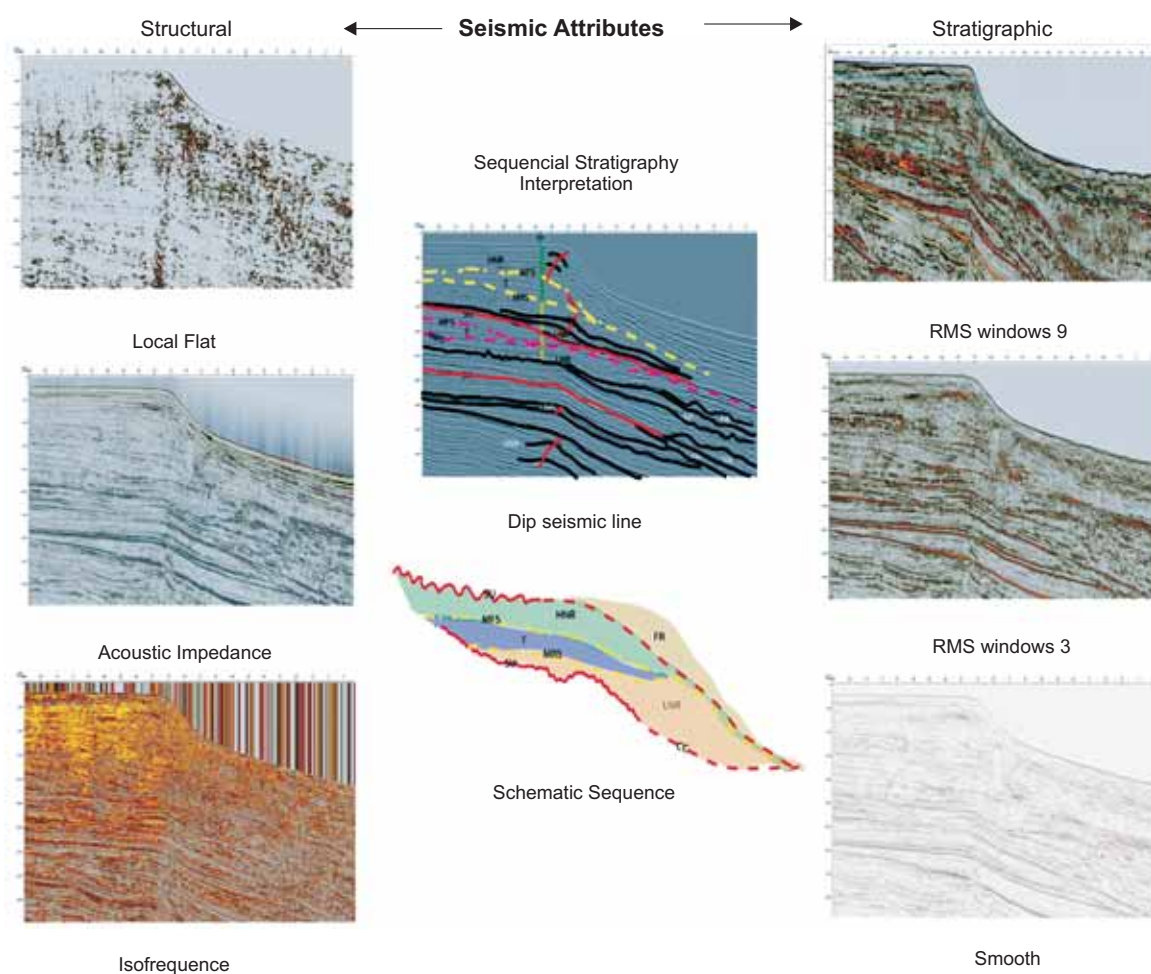


Figure 3. Dip seismic line display of Seismic Attribute analysis and seismic stratigraphy interpretation

In the seismic images processing, local seismic attributes analyses (LSAA) are being used to measure seismic signal characteristics of neighboring points. This technique has been applied in different steps of multicomponent seismic image acquisition (Fomel, 2007). In this paper Attributes were used to delineate structural (dip/azimute, ant-tracking, dip deviation, local structural dip, structural smoothing, variance, etc), stratigraphy (iso-frequency component, local flatness, acoustic impedance, etc) and geomorphologic (gradient, coherence, strata slices attributes, horizon slice attributes etc) features (Figures 2 and 3). Coherence attribute measures the similarity of a trace with its neighbors and display discontinuities,

faults and channels (Marfurt *et al.* 1998). This criterion guides the interpreter in the establishment of seismic reflection attributes and seismic facies patterns. Instantaneous amplitude and frequency, which are the most frequently used, show changes in lateral continuous reflections.

Some attribute analyses were applied to seismic lines belonging to the Brazilian offshore. The most important features are the lineaments and fractures found by means of local flat analyses and relative acoustic impedance that showed normal faults influencing the sedimentary package into the Rio Grande Cone. Root meters square permits delineating strong reflectors that could be correlated and interpreted by

a sequence stratigraphic model, and delineated by geomorphological elements like channels.

Seismostratigraphy and sequence stratigraphy of the Rio Grande Cone

Rio Grande Cone is located in a passive margin basin characterized by several progradational systems supplied by fluvial and cratonic sediments influenced by sea level fluctuations. Some geological features have been reported by authors like Alves (1977); Fontana (1996) and Porto (2007).

Seismic section and attributes permit identifying structural, sedimentology, and geomorphology features and they allow determining structural and the stratigraphic sequences elements.

Tectonic structures description

The southeast of the Brazilian offshore is composed by sequences influenced by rift faults causing a half-graben configuration on the basal sequence. The Rio Grande Cone comprises post-rift sequences. The Post-rift stage starts during Aptian, in which the

adiastrophic tectonic developed, influencing basal sequences, i.e., the Aptian-Albian sequence. Above it more than 3000 m of sediments belonging to Rio Grande Cone were laid (Fontana, 1996). Structural sequences are influenced by tectonic and sedimentary structures. Relevant structures correspond to active system faults until Pleistocene -late Wisconsin (Alves, 1977).

From a structural point of view, fault systems are the most relevant factor that affects clastic sequences. The first domain contains a faults system, including listric faults, thrust and their detachment planes. Those structures are characterized by normal faults that were originated by distensive stress generating displaced blocks located on the proximal area (Northeast-Southwest trends and vergence to the Northwest). There are some small faults on the cone's distal section which structural style changes to inverse faults. This style is located to the end of the section (Figure 4).

Some seismic section permit identifying gravitational deposits associated to fault systems, generating deformational and tectonic structures. Studies have

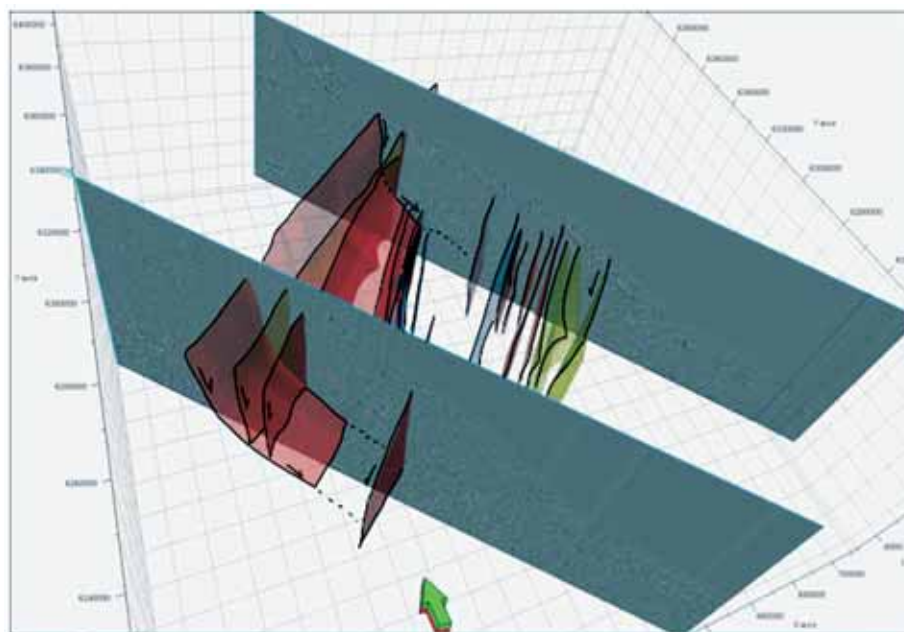


Figure 4. Three-dimensional structural model of the Rio Grande Cone, Brazilian Southeast.

determined that some lineaments and faults were originated by fluids decompaction, and have influenced on the generation of fluid escape structures visible on the sea bottom's surface (Fontana, 1996; Porto, 2007).

The Rio Grande Cone constitutes a huge sedimentary package characterized by the result of channel system morphology, sediment waves and contourities that have been influenced on the upper sequences by a distensional fault system that originated normal faults to the North and inverse faults to the South.

Stratigraphic Sequence in the Rio Grande Cone

The seismic stratigraphic interpretation of the Pelotas Basin includes at least sixteen sequences (Butler, 1970; Fontana, 1996 and Porto, 2007). The cone's area has geoforms, internal structures and velocity models that can be described with geophysical methods, for instance seismic refraction. The refraction

method revealed along to Rio Grande do Sul and the Uruguay's continental margin a 1.8 km/s wedge, and a velocity model for the sedimentary sequence (Alves, 1977). The wedge sedimentation lasted from Middle Miocene to Pleistocene. Stages of deposition and erosion were caused by eustatic sea level fluctuations, originating the development of four sedimentary sequences. The depocenters distribution suggests a source migration towards the continent, maybe due to marine transgression (Alves, 1977). A different interpretation for the Pelotas Basin and Florianopolis shelf established eight sedimentary sequences using seismic reflection (Gonçalves *et al.* 1979). Martins (1983) described the Rio Grande Cone as a sedimentary-originated deep sea feature supplied by *Rio Grande do Sul* highlands, with progradational deposition and gravitational processes (turbidities and another flux) modeled by bottom current. Some researchs reports hydrate gas in the Pelotas Basin, i.e., Fontana (1989), Rosa *et al.* (2006).

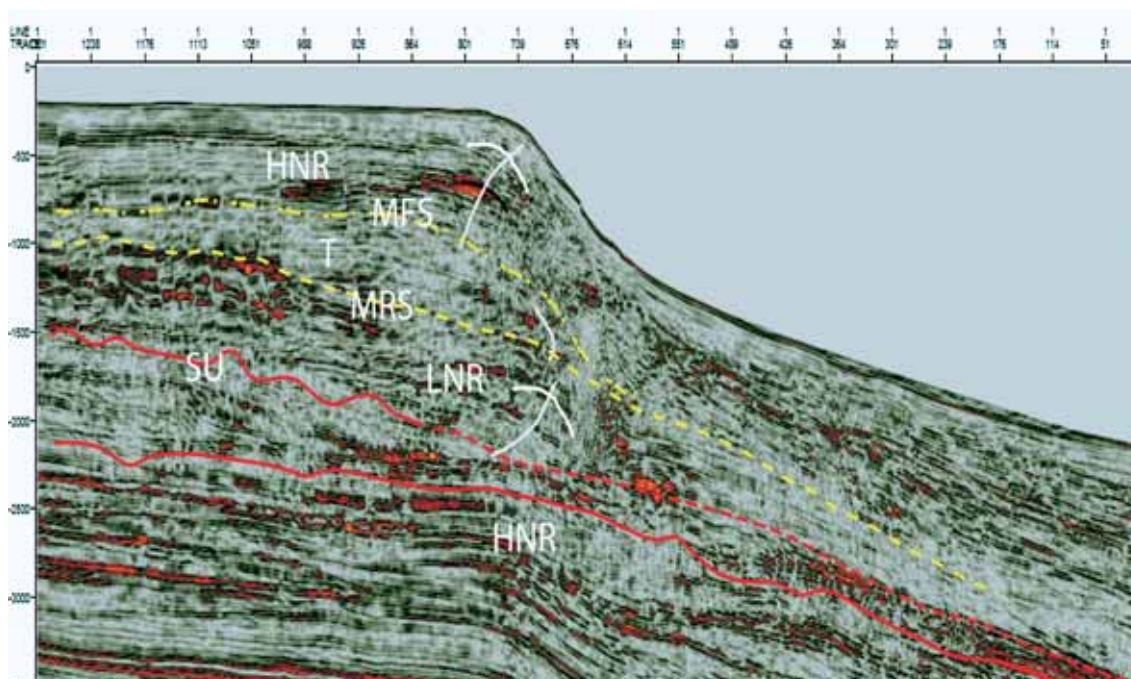


Figure 5. Seismic dip line (DI) interpretation of surface (SU: unconformity; MRS: Maximum Regressive and MFS: Maximum flooding surfaces) sequences (HNR: High normal Regressive, LNR: Lowstand Normal Regressive).

RIO GRANDE CONE TECTONO-STRATIGRAPHIC MODEL – BRAZIL: SEISMIC SEQUENCES

The generated Transgressive (T), highstand (HNR) and Lowstand regressive (LNR) could be identified on seismic sections (Figure 5). The shelf edge suffered erosion resulting in the truncation of the prograding sediments. The eroded sediments fed it via suspension or gravitational processes. This feeding was four times greater than Holocene rates.

Seismo-stratigraphy and sequence stratigraphy description

In order to describe the evolution of the Rio Grande Cone, it is important to describe its tectono-stratigraphy. The Cone comprises several Continental and

post-rift (drift) sequences. The middle and upper sequences belong to the Rio Grande Cone (Figures 5 and 6). The Middle sequences correspond to onlap transgressive sequences and downlap basinward. All sequences permit identifying montiforms with bidirectional downlaps that represent the lowstand fan unit deposited on the basin's deeper area. This is the first lowstand stage in which a rapid decrease on eustatic curve inflection occurs. Few continuous reflections and variable amplitudes are found on paleoslopes. Middle sequences with erosion surfaces changed from Cretaceous to Tertiary. Geological mapping considerations comprise sequences that have been influenced by different structural and

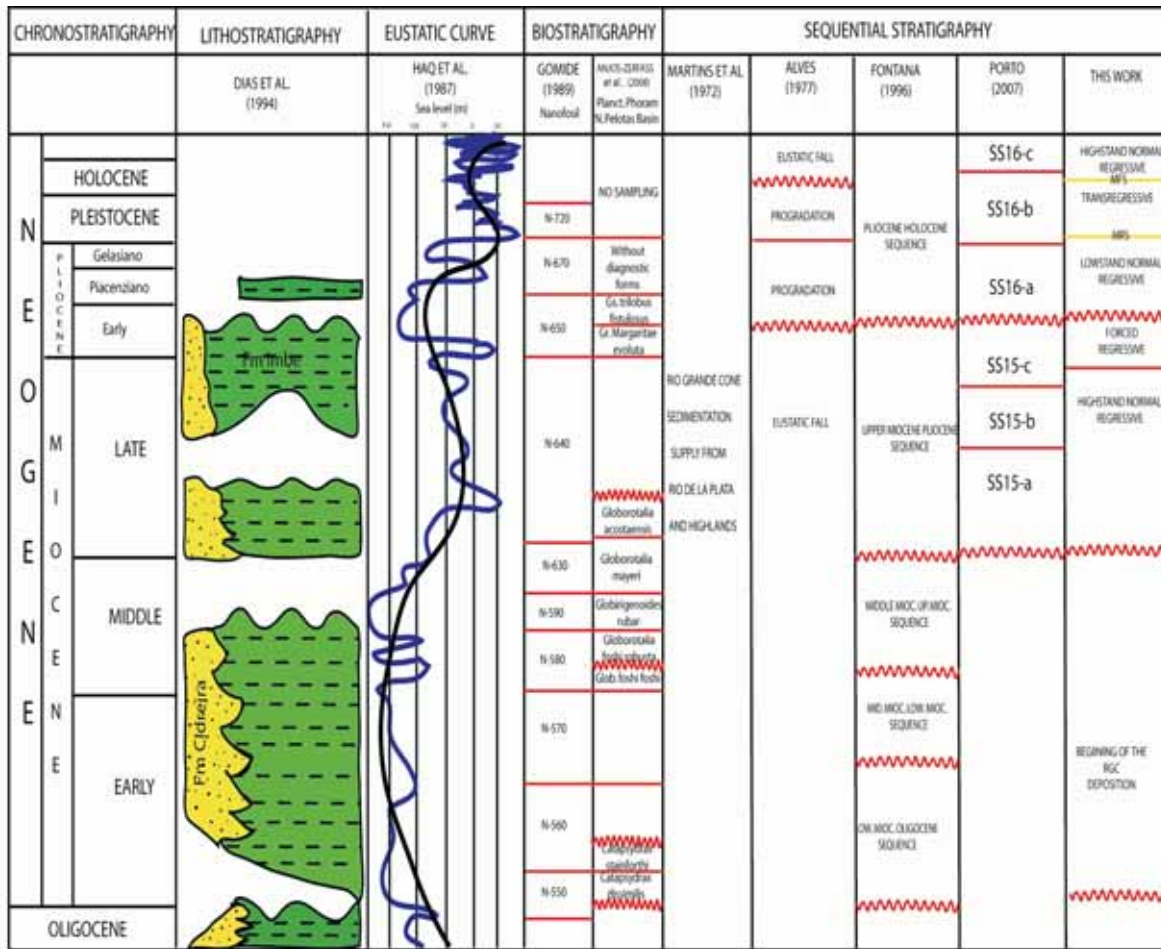


Figure 6. Sea level variations (Haq et al, 1987) and chronostratigraphy interpretation correlation in the Rio Grande Cone (Alves, 1977; Fontana, 1996; Porto, 2007 and this paper).

stratigraphic styles dominated by facies variations that were caused by a high quantity of sediments supply. The upper sequences that belong to the Rio Grande Cone are characterized by changes from retrogradational to progradational sequences. Transgressive (T) and regressive features (LNR) are the result of sea level fluctuations that occurred from Aptian. In the Holocene Transgression (T), the southeast continental margin has not received any significant quantity of terrigenous supply. Two processes are still active: widespread pelagic and sedimentation geostrophic. Contour current activity developed along lower continental rise. Bottom-currents deposits result from upslope flowing processes, while gravity deposits result from downslope process. Recent drift sequences allow identifying slope features deposited by bottom-currents, slump and gravity deposits process (Alves, 1977).

Due to the instability of the upper sequences originated by steep slopes, the seismic has established slumps geometric characteristics that lead to a progradational system. The sediment supply in a decline plane influenced by a higher sea level produces a mass flow deposit.

The highstand (HNR) is constant from Paleocene to Middle Eocene and Oligocene, through regressive intermittent cycles that finished with an Oligocene regression (This is shown by hard layering, as result of paleoshelf). There are regional Terraces and an erosive surface covered by deltaic events until Upper Pleistocene on *Rio de la Plata*, (Martins, 1983; Martins *et al.* 1990). They have similar geometries to the Rio Grande Cone. Sedimentary effects in the Paleocene cycles could be evident in quiescence tectonic causing stability. In the final cycle, as result of Andean tectonics, a Regional tilt from West South American took place and

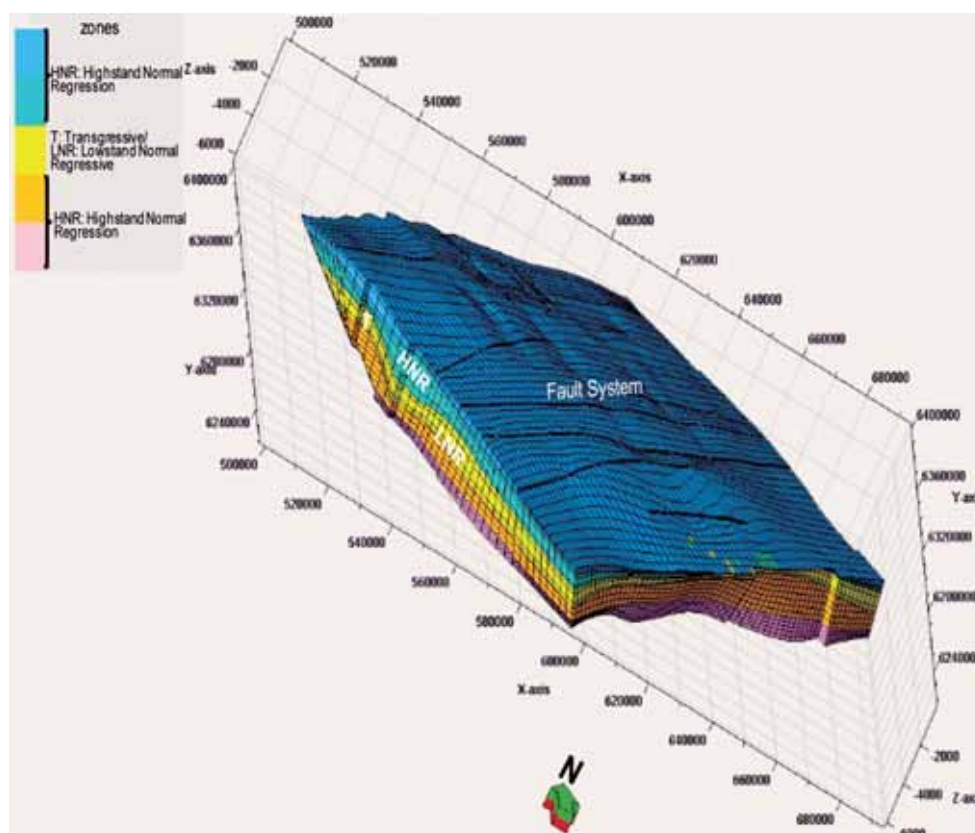


Figure 7. 3D Model obtained from seismic stratigraphic interpretation showing paleoshelf and several stratigraphic sequences and highlights the tectono stratigraphic features of the Rio Grande Cone.

caused the beginning of the sea level decrease and the deposition of progradational sequences. This event could be coincident with Haq curve (Figure 6).

Rio Grande Modeling and Mapping The boundaries and horizon picking obtained in 2,5-D configuration permitted constructing the three-dimensional subsurface image of the Rio Grande geofom (Figure 7). Seismic stratigraphic analyses and basal sequence mapping permit identifying platforms with regressive progradational sediments. The sequences are comprised by sequential systems in a marginal sag type since late Cretaceous. These correspond to the Pelotas Basin sequences.

The semicircular-shaped plan-view morphology extends to the Southeast and strike to the North. The thick recent sequences are crossed by faults systems and by the presence of geophysics anomalies, for instance a reflector that simulates the bottom surface (BSR). This reflector is an anomaly generated by the high impedances caused by hydrate gas presence. Below 500 ms, a system faults extends cutting all upper sequences.

Near offset or proximal sector it includes some clinoform set which has been separated by internal downlap surfaces and are not faulted. Visualization and 3D modeling has allowed defining fault systems geometries (Figure 7), showing details of normal faults. This process includes fault propagation and could be interpreted as a polygonal faults system due to contraction factors and early fluid expulsion during possible burial, where compaction acts in different directions on clay rich sediments. The Rio Grande Cone progradational layering produce continuous offlap, evidencing features like the continental slope, the Marginal Cone, Progradational systems, and the upper interval that constitute recent continental Shelf (Urien *et al.* 2003). The last stage during the inferior Holocene sedimentary dispersion included erosive process through submarine sedimentation.

Eustatic changes are less evident during the Neogene. The Highstand and Lowstand alternation could be aged Miocene and Pliocene. They are associated

to eustatic episodes with sea level changes that are controlled by Andean orogenic pulses.

Conclusion The feature named Rio Grande Cone could be defined as a huge semicircular shape geological body with a thick package of sediments. It is mainly a shale geofom. The area is influenced by complex structures that affect the whole sedimentary package. The Rio Grande Cone is overlying an older inferior and a middle sedimentary sequence that constitute the Pelotas Basin sequences. The cone comprises the basin's younger sequence which is the upper sequence. The three dimensional analysis comprises an academic research of seismic data applied to the modeling and visualization for interactive understanding. This will permit a paleogeomorphology reconstruction of Rio Grande Cone.

A methodology and a typical sequence of seismic interpretation are given in this paper. The purpose is to show the importance of visualization, attribute analysis and modeling, especially in sequential stratigraphy.

It is important to emphasize the use of different computational technologies as tools for data interpretation, visualization, and the recovery of information for the subsurface image by means of a velocity model.

Acknowledgments

This article was written for the Doctorate Program Research in the Federal University of Rio Grande do Sul (UFRGS - Porto Alegre, Brazil) sponsored by National University of Colombia. Thanks to National Petroleum Agency for providing some of the seismic lines used in this paper. Thanks to Schlumberger for the software contribution, especially to the technical support for Petrel's (Module and tools 2008), processing, visualization and seismic interpretation with the geophysical integration data.

References

- Al-Husseini, M., Glover J. and Barley B. (1981). Dispersion Patterns of the Ground Roll in East-

- ern Saudi Arabia, *Geophysics*, Vol 46, p. 121-137.
- Alves, E. C. (1977). Estrutura rasa do talude e sopé da Margem Continental do Rio Grande do Sul e Uruguai. Tese de Mestrado. Instituto de Geociências, Universidade Federal do Rio Grande do Sul, Porto Alegre/RS, 77p.
- Al-Yahya, K.M. (1991). Application of the Partial Karhunen-Loève Transform to Suppress Random Noise in Seismic Sections: *Geophys. Prosp.*, 39, p. 77-93.
- Anjos-zerfass, G., Souza, P. A., Chemale Jr. F. (2008). Biocronoestratigrafia da Bacia de Pelotas: estado atual e aplicação na geologia do petróleo. *Revista Brasileira de Geociências* 38(2), 42 – 62.
- Butler, L. W. (1970). Shallow structure of the continental margin southern Brazil and Uruguay. *Geological Society of America Bulletin*, New York, N.Y., V.81, p. 1079-1096
- Catuneanu, O. (2006). Principles of sequence stratigraphy. Elsevier's sciences & Technology. British Library, p. 375.
- Chopra, S. and Marfurt, K. J. (2005). Seismic attributes – A historical perspective. Society Exploration Geophysicists 75th Anniversary. *Geophysics*, Vol. 70, N. 5. 26 p.
- D'Agosto, C., Marfurt, K. and Steven, J. (2003). Modeling and Removal of Ground Roll from Horizontal Component of C-Waves. *SEG*. 1981-1983.
- Dias J. L., Silveira, D. P., Sad A. R. E., and Latgé M. A. L. (1994). Estágio atual do conhecimento geológico. *Boletim de Geociências da Petrobras*, 8(1), p. 235-245.
- Fomel, S. (2007). Local seismic Attributes. *Geophysics*. vol. 72. N. 3. Pag. A29-A33.
- Fontana, R. L. (1989). Evidências Geofísicas da presença de Hidratos de Gás na Bacia de Pelotas – Brasil. *Primer Cong. Soc. Bras. Geofísica*, 7(1):93.
- Fontana, R. L. (1996). Geotectônica e sismoestratigrafia da Bacia de Pelotas Plataforma de Florianópolis. Tese de Doutorado, Universidade Federal do Rio Grande do Sul, Porto Alegre/RS. 214p.
- Friedman, M. G. (1998). Sedimentology and stratigraphy in the 1950's to mid-1980s: The story of a personal perspective. *Episodes*. Vol. 21. no. 3. New York. USA. 172-177.
- Gomide, J. (1989). Bacia de Pelotas – Bioestratigrafia baseada em nanofóseis calcáreos. In: SBP, Congresso Brasileiro de Paleontologia, Anais 11, 338-351.
- Gonçalves, A., Oliveira, M.A. and Oliveira, M. S. (1979). Geología da Bacia de Pelotas e da Plataforma de Florianópolis. *Boletim Técnico da Petrobrás*, RJ. 79:157-174.
- Haq, B. U., Hardenbol, J., and Vail, P. R. (1987). Chronology of Fluctuations Sea Levels since the Triassic (250 years ago to Present): *Science*, V. 235, p.1156-1167.
- Jones, I. F., and Levy, S. (1987). Signal Noise Enhancement in Multichannel Seismic Data Processing: *Geophys. Prosp.*, 35, p. 12-32.
- Karsh, H., and Bayrak, Y. (2004). Using the Wiener – Levinson Algorithm to Suppress Ground Roll. *Journal of Applied Geophysics* 55, p 187-197.
- Levy, A. and Linderbaurn, M. (2000). Sequential Karhunen-Loève Basis Extraction and its Application to Images, *IEEE Transactions on Image Processing*, Vol 9, N. 8, p. 1371-1374.
- Liner, C. (2008). Time line data. American Association of Petroleum Geologist – Explorer. November. p 31.
- Luo, Y., Marhoon, M., Al Dossary, S., and Alfaraj, M. (2002). Edge-preserving smoothing and applications: The leading edge, 22, 136, 138, 141-158.
- Marfurt, K.J., Kirilin, R. L., Farmer, S., L. and Bahorich, M.S. (1998). 3-D seismic attributes using a semblance-based coherence algorithm: *Geophysics*, 63, 1150-1165.

- Martins, L. R.; Uruen, C. M.; Buttler, L. W. (1972). Províncias fisiográficas e sedimentos modernos da margem continental Atlântica. Congresso Brasileiro de Geologia, 26o, Belém-Pará. Anais...Sociedade Brasileira de Geologia, p.105-114.
- Martins, I. L. (1983). Modelo Sedimentar do Cone de Rio Grande. Tese de Doutorado. Instituto de Geociências, Universidade Federal de Rio Grande do Sul, Porto Alegre, RS. 205p.
- Martins, L. R.; Martins, I. R. and Uruen, C.M. (1990). Episódios Dinâmicos de Curta Duração na Margem Continental do Rio Grande do Sul: Registro e Importância. Acta Geológica Leopoldensia. 29 (2): 9-22. São Leopoldo. Brasil.
- Mitchum, M. R. Jr., Sangree, J., Vail, P., and Wornardt W. (1994). Reconizing Sequences and System Tracts from Well logs, Seismic Data, and Biostratigraphy: Examples from the late Cenozoic of the Gulf of Mexico. In: Weimer, P. and Posamentier, H. W. (1994). Siliciclastic sequence stratigraphy: recent developments and applications. American Association of Petroleum Geologist, Memoir, 58. p. 163-197.
- Porto, R. A. (2007). Interpretação Sismoestratigráfica da Porção da Bacia de Pelotas que engloba o Cone de Rio Grande e a Avaliação do seu Potencial Petrolífero. Tese de Doutorado. Universidade Estadual do Norte Fluminense. Macaé/RJ. 264 f.
- Posamentier, H., and Kolla, V. (2003). Geomorphology and Stratigraphy of Depositional Elements in Deep-Water Settings. Journal of Sedimentary Research; v.73; no. 3; p. 367-388.
- Rosa, M. L. C., Ayup-Zouain, R. N., & Barboza, E. G. (2006). Utilização de Seções Sísmicas 2D na Identificação de zonas de escapes de Flúidos, Gravel, N. 4. p. 109-118. Porto Alegre.
- Scales, J. and Snider, R. (1998). ¿What is Noise? Geophysics, Vol 63, p. 1122-1124.
- Sarta, E. (2004). Implementación de un software de pre proceso y análisis de datos sísmicos - Seismic - UN. Geociencias – Universidad Nacional de Colombia. 163 p.
- Taner, M. T., and Sheriff, R. E. (1977). Applications of amplitude, frequency and other attributes to stratigraphic and hydrocarbon determination: American Association Petroleum Geologist, Memoir 26, 301-327.
- Taner, M. T., Kochler, F., Sheriff, R. E. (1979). Complex Seismic trace analyses. Geophysics, 44, no. 6, 1041-1063.
- Uruen, C. M., Martins, L. R. and Martins, I.R. (2003). Paleoplataformas e Programação Deltaica do Neógeno na Margem Continental do Uruguai e Norte a Argentina. Gravel N. 1. 40 - 46. Porto Alegre - Brasil.
- Yilmaz, O. (1987). Seismic Data Processing: Society of Exploration Geophysicists, Tulsa, p. 9-79.
- Zywicki, D., (1999). Traditional Seismic Surface Wave Tests. Georgia Tech Research Institute (GTRI), p. 11.34