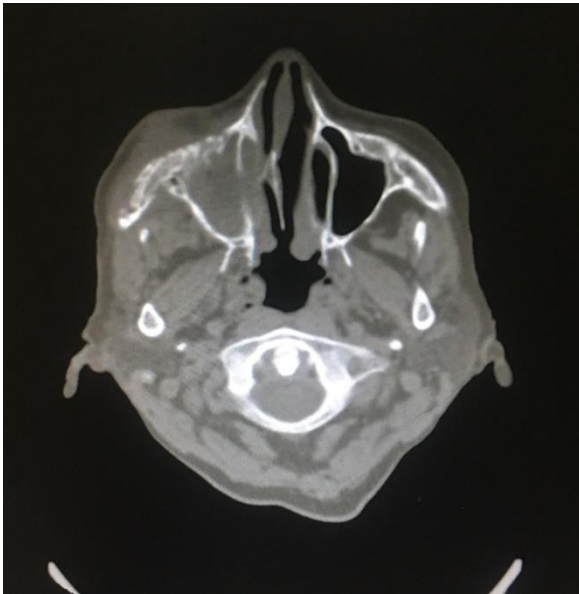
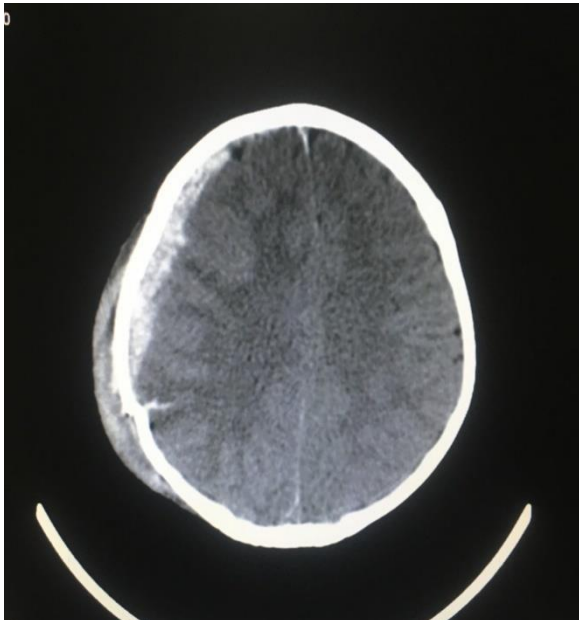
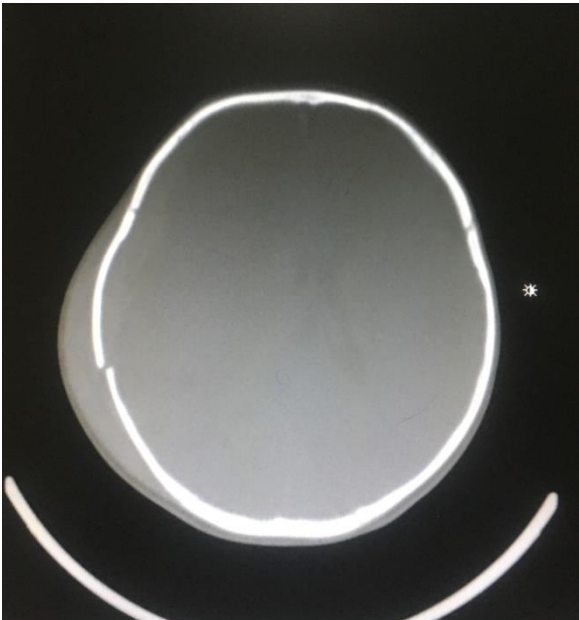
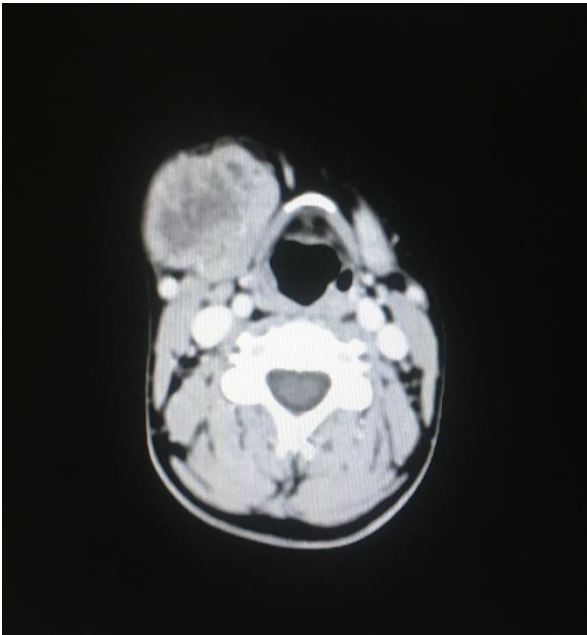


# Radiological Images

Fracture bilateral parietal bones with acute subdural hematoma in right fronto-parietal region



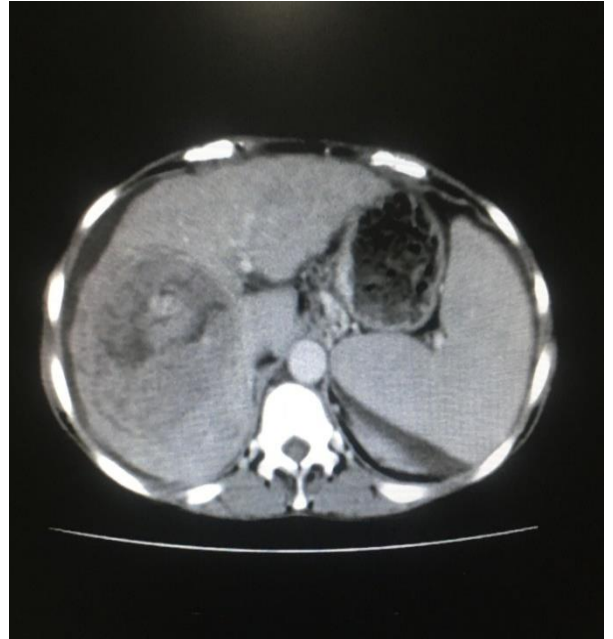
**Right submandibular gland pleomorphic adenoma**



**Covid -19 Pneumonia**



## Hepatocellular Carcinoma



## Placenta Previa Grade IV with placenta Accreta



### Contributed by:

Department of Radiology  
Dr. Akbar Niazi Teaching Hospital, Islamabad