

# Accountability of the Minahasa Regency Regional General Election Administration (KPUD) (Study on the 2018 Minahasa Regency Head Election)

**Agnesia Benedictta C. Tewu, Itje Pangkey, Marthinus Mandagi**  
Universitas Negeri Manado, Tondano Barat, Minahasa 95615, Indonesia  
Email: vicbogia@gmail.com

## ARTICLE INFO

Date received : 13-10-2021  
Revision date : 2-11-2021  
Date received : 12-11-2021

### Keywords:

Accountability;  
Development;  
Implementation;  
General election

## ABSTRACT

This study aims to analyze the accountability of the general election administration in the Minahasa Regency. This research uses qualitative methods, direct research to data sources and researchers are the key instruments. Qualitative research emphasizes the process of searching for the meaning behind the phenomena that arise in research with the aim that the problems studied are more in-depth, natural, and as they are without interference from researchers. From the results of the study, it was found that accountability is an ethical concept that is close to government public administration (government executive institutions, parliamentary legislative institutions, and judicial institutions) this is often used synonymously with concepts such as accountability, the ability to provide answers (answerability) that can be blamed (blameworthiness) and which have liability, including other terms that have no connection with the hope of being able to explain part of one aspect of public administration. The technical guidance received by PPS and KPPS is just a matter of election procedures. Submission of other information to voters is still carried out directly by the KPU and its implementation is not too optimal and not yet accountable, where the limitations of KPU members are not good in quantity. Then for suggestions to make it even better, it is recommended that the implementation of the Regional Election for the Regional Head Election of the Minahasa Regency KPUD should be more accountable from the preparation stage to the announcement stage of the Pilkada winner.

## Introduction

Administration In the context of governance, accountability is a prerequisite for the creation of good, democratic, and trustworthy governance (Raba, 2006). In this concept, accountability is often associated with a car or resource management that has been given and controlled by an institution, or

individual to achieve goals through a medium in the form of periodic performance accountability reports (William, 2015).

One thing that cannot be separated from the implementation of good governance is the concept related to its characterization, including transparency, responsiveness, consensus orientation, equity, efficiency, effectiveness, and accountability (Zeyn, 2014). From these characteristics, there are

How To Cite: Tewu, A. B. C., Itje Pangkey, Marthinus Mandagi (2021). Accountability of the Minahasa Regency Regional General Election Administration (KPUD) (Study on the 2018 Minahasa Regency Head Election). *Journal of Social Science* 2(6). <https://doi.org/10.46799/jss.v2i6.252>  
E-Issn: 2721-5202  
Published By: Ridwan Institut

three important aspects of accountability, namely the realization of transparency, efficiency, and effectiveness. Accountability is the provision of information and disclosure of activities and performance to interested parties. Accountability according to (Agung, 2020) is a form of obligation to account for the success or failure of the implementation of the organization's mission in achieving predetermined goals and targets, through a medium of accountability that is carried out periodically.

Furthermore, Stoker (1998:82) suggests that accountability is an effort to account for the implementation of duties and authorities by public officials or by government administrators (Chhotray & Stoker, 2009). Therefore, every government administrator in carrying out his various duties and authorities must prioritize accountability so that the rights, obligations, actions, expertise, and even time spent in public must be accountable so that good governance will be realized.

Public accountability is the government's responsibility to the community related to the activities and activities that are its responsibility through the presentation of financial statements, where the public has the right and authority to ask for accountability (Fernando, Loke, & Rahayu, 2011).

General elections as a means of implementing people's sovereignty in Indonesia are carried out by the General Election Commission (KPU) (ZALUKHU, 2021). Normatively, the existence of the KPU is regulated in Article 22E paragraph (5) 1945 which states that the election is carried out by a General Election Commission. The General Election Commission (KPU) is a national, permanent, and independent election organizing body. KPU as the organizer of the election and as mandated in Law Number 07 of 2017 concerning General Election Organizers in organizing the General Election is committed and guided by the principles of independence, honesty, fairness, legal certainty, orderliness, public interest, openness, proportionality, professionalism, accountability, efficiency, and effectiveness (Nengsih, 2019). Considering that the KPU's task is to organize elections for members of the House of Representatives (DPR), members of the People's Representative Council (DPD), Members of Regional People's

Representatives (DPRD) as well as elections for President and Vice President which are held directly, publicly, freely, confidentially, honestly and fairly (Suantara, 2021).

In addition to this task, it also carries out the implementation of Regional Head Elections (Pemilukada), namely to elect the Governor and Deputy Governor, Regent and Deputy Regent, Mayor and Deputy Mayor. To carry out these tasks, the Provincial KPU and Regency/Municipal KPU were also formed. Participants in Indonesia's five-year democracy cannot be separated from various kinds of problems that have always been a polemic in this country (Subiakto, 2015). The phenomenon of the White Group, the right to vote is a right that should not be wasted. Because these rights can determine the fate of the State of Indonesia for the next 5 years. But until now many people have not exercised their right to vote. They are referred to as the White Group or people who do not vote during elections. Many factors can cause the white group, ranging from individual factors and factors from not knowing the existing legislative candidates, to the many jobs that make people do not have time to go to polling stations. From the government, such as the lack of socialization carried out so that many people do not understand to vote, especially people who are in remote or remote areas.

From the observations of researchers related to the Regional Head Election in 2018, there were problems at the stage of the Regional Head General Election such as in determining the Permanent Voter List (DPT) where DP4 was based on the Identity Card (KTP-el). Furthermore, there are public complaints where many residents are not registered as voters even though they have long lived in Minahasa Regency.

The next problem that has become phenomenal is that the basic rules that refer to Law Number 7 of 2017 concerning General Elections Article 240 point G, which should be the basis of PKPU number 2 of 2018 are issued, still need to be interpreted explicitly in the determination of the Permanent Candidate List (AMANDE, 2018). Normatively in the Regional Head Elections in Indonesia, in Article 2 of Law number 07 of 2017 concerning the Implementation of Elections, there are at least 3 indicators that have public accountability for organizers, namely: (1) that

each organizer (KPU) must be independent, honest, fair, legal certainty, orderly organizers of the Owners, prioritizing public and open interests; must be professional, proportional, accountable, efficient and effective; (2) The Operator must be independent of any party about its duties and implementation and authority; (3) The organizers must consistently enforce the election law regulations.

From the problems above, the researcher is interested in researching the Administrative Accountability of the Regional General Election Commission (PUD) of the Minahasa Regency (Study on the 2018 Minahasa Regency Head Election). The formulation of the problem in this research is: how is the level of accountability in the administration of the Regional General Election Commission (KPUD) in the implementation of the General Election in Minahasa Regency?.

## Method

The method used in this research is qualitative. Where Bogdan and Biklen (Astuti, Prawoto, Irawan, Sugiono, & Saleh, 2019) suggest that qualitative research is carried out in natural conditions, (as opposed to an experiment), directly to the data source and the researcher is the key instrument. Qualitative research emphasizes the process of searching for the meaning behind the phenomena that arise in research with the aim that the problems studied are more in-depth, natural, and as they are without interference from researchers.

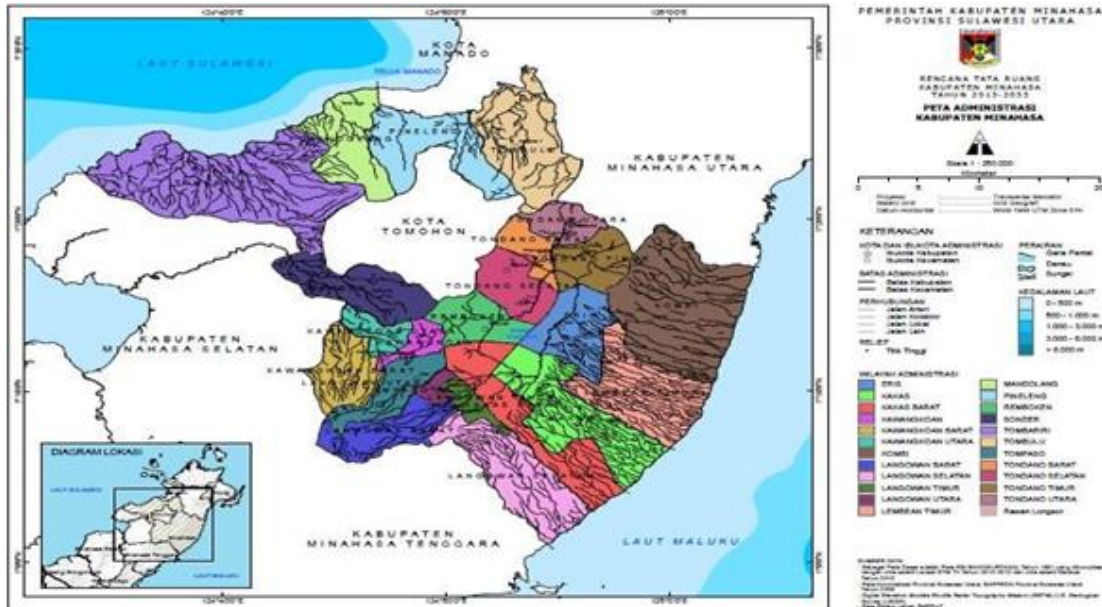
The focus of this research is related to the formulation of research problems and the

position of focus is temporary because it can change when the research is conducted. It is said to be a temporary focus because at first, it is still general and vague, it will become clearer and get focus after the researcher is in the field (Gústavsdóttir, n.d.). The main data sources in qualitative research are words and actions, the rest are additional data such as other documents. The main instrument in qualitative research is the researcher himself, (Sugiyono, 2013) suggests that in collecting data the researcher must actively engage himself in the field. By using tools such as photos, field notes, tape recorders, and interview guidelines.

## Results And Discussion

Minahasa Regency has an area of 121,043.31 ha consisting of 25 sub-districts. Tombariri/East Tombariri District. has the largest area of 15,840,89 ha while Kawangkoan District has the smallest area of 1,325,21 ha. Minahasa Regency is one of the areas in North Sulawesi. The location of this area according to latitude and longitude is: 1o22' 44"N/ 124o 33' 52" east longitude to 1o 01' 11" north longitude/ 124o 54' 45" east longitude to 125o 04' 21"E/1o 20' 25" LU. Minahasa Regency is generally hilly, mountainous, and a rather broad plain, only around Lake Tondano. These plains are found in the Tondano, Remboken, Tommaso, Langowan, and Kakas areas. Slopes vary from flat to very steep. Very steep slopes are found in Kombi District, Kakas District, and South Langowan District.

### A. Minahasa Regency Map



The total area of Minahasa Regency is 121,041.30 ha, but some areas are not productive of 29,103 ha consisting of a forest area of 14,816.00 ha, a residential area of 6,344.11 ha, a coastal border area of 759.00 ha, a river border area of 3,562.00 ha, area around lakes/dams covering 418.00 ha, area around springs 6.40 ha, green open space area of 353.00 ha, and area of nature reserves, nature conservation and cultural heritage covering 2,845.00 ha. So that the production area is 87.4911 ha.

**B. Election Overview**

In the implementation of general elections (elections) to elect leaders of the state, province, district, city, and people's representatives, of course, an election management institution is needed. In Indonesia, the institution responsible for organizing general elections is the General Elections Commission. The General Election Commission is a state institution that is national and independent to organize General Elections in Indonesia.

Based on the provisions of Article 1 point 9 of Law Number 1 of 2015 as amended several times, most recently by Law Number 10 of 2016, the Minahasa Regency KPU is the General Elections Organizing Agency that is given the task of holding the Election of Regents and Deputy Regents in Minahasa Regency

which included in the third wave of the 2018 Simultaneous Regional Elections.

**Selection Stage**

Based on KPU Regulation Number 1 of 2017 concerning Stages, Programs and Schedule for the Election of Governor and Deputy Governor, Regent and Deputy Regent, and/or Mayor and Deputy Mayor, as amended by General Election Commission Regulation Number 2 of 2018, as well as Election Commission Decree General Minahasa Regency Number 33/PP.02.3-Kb/KPU-Kab/7102/VII/2017 concerning Technical Guidelines for Stages, Programs, and Schedules for Organizing the Election of Regents and Deputy Regents of Minahasa Regency in 2018.

**C. Research result**

Accountability is an ethical concept that is close to government Public administration (government executive agencies, parliamentary legislative institutions, and judicial institutions of the Judiciary) it is often used synonymously with concepts such as accountability, the ability to provide answers, which can Blameworthiness and liability, including other terms that have relevance in the hope of explaining some or one aspect of public administration.

Elections in the form of democracy with an important aspect to be carried out democratically by all related communities, but not every election is said to be democratic, because democratic elections

are not just symbols or symbols, but elections that must be carried out periodically, definitively, inclusively, and competitively in determine government. The legitimacy of the power of a certain person or political party is not obtained using violence. As a form of implementation of democracy, the next general election serves as a forum that screens candidates for people's representatives or state leaders who have the capacity and capability to be able to act on behalf of the people. Apart from being a forum that filters people's representatives or national leaders, general elections are also related to the principle of the rule of law, because through elections, the people can choose their representatives who have the right to create legal products and carry out supervision or implementation of the people's will outlined by the representatives. - representatives of the people. However, the victory occurred because the majority of the people's votes were obtained through fair elections. Democracy provides space for individual freedom. Elections in this context mean that conflicts that occur during the electoral process are resolved through democratic institutions (Sayuti, Ulum, & Kusnadi, 2018).

In the following, the researcher asked some questions to informants from PPS members in the 2018 regional head election, KPPS Kelurahan, as well as the Head of the field of data determination and services of the Capital Service. Initially, the researcher asked whether there was a socialization process for voters regarding voter participation and election procedures? Informant "JD" answered:

For PPS Kelurahan only receive instructions from the KPU because the process of socialization to voters is all carried out by the KPU. The election procedure in the kelurahan is usually carried out during mourning activities or community organization events (artisan) and is carried out by the Kelurahan PPS. (January 2020 interview).

To make the election of the Regent and Deputy Regent of Minahasa successful in 2018, according to the stages,

programs, and schedules that have been set by KPU regulation number 1 of 2017. As amended by KPU regulation number 2 of 2018, it will be held on 27 June 2018, KPU Minahasa continues to social programs and activities to the community, including inviting all people who are scattered in various communities and the kelurahan. Furthermore, with the same question related to the process of socialization to voters regarding voter participation and election procedures, the informant "MK" answered:

In general election socialization activities related to voter participation, the communication process that takes place is usually carried out using lectures and dialogues, but can also be carried out in worship columns and churches and aims to convey messages and information to make it easier for the public to understand. (Interview January 2020).

While the informant "LM" answered "Less Know". Through several socialization bases in the community that was conveyed according to the informants above, they received such an enthusiastic response from the community. With this socialization, the KPU also encountered several obstacles in the southern Tondano area, namely the position of the Manado University campus which was occupied by so many students, in this case, Unima students who had graduated status but were still registered in the DPT records in the southern Tondano area.

Socialization is part of the process of learning about culture about the social system. In this process, an individual from childhood to old age learns patterns of thinking in acting and interacting with all kinds of individuals around him who occupy various social roles that exist in everyday life. About the socialization process in every Pilkada activity in Minahasa Regency, the definition of the concept of socialization above seems still relevant to be used as a reference basis. At least to explain the relationship between socialization as a social process, and learning about the culture as a concept (cultural learning process). To realize the 2018 Minahasa elections that are credible and safe, the Minahasa Regency KPU through the Minahasa



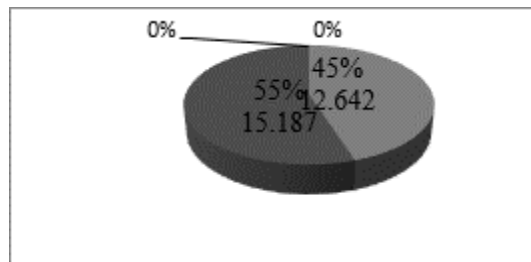
Regency regional coordinator has carried out socialization for community leaders and religious leaders in various sub-districts in Minahasa, and was also attended by PPK, resource persons for the Minahasa KPU chairman and the Minahasa Police Chief.

Coordination related to updating data and compiling voter lists as well as evaluation in the context of the 2018 Minahasa Regent and Deputy Regent elections is one of the efforts to uniform perception and understanding of substance, as well as to prepare data and documents needed in decision making. The Minahasa Regency KPU has carried out several activities with the Minahasa Regency Population and Civil Registration Office, in addition to building harmonization and synergy in welcoming the 2018 Minahasa Pilkada as well as taking steps to optimize the process of updating data and compiling the voter list.

In the successful election of the Regent and Deputy Regent of Minahasa in 2018, specifically related to updating data and compiling the voter list as stated in the letter from the chairman of the Minahasa Regency KPU number 332/KPU-Min-023.436239/XI/2017 dated November 13, 2017, regarding the request for a hearing, the Minahasa Regency KPU together The Minahasa Regency Disdukcapil held a meeting and agreed to cooperate on the condition that voters must have an EL-KTP as stipulated in KPU regulation number 2 of 2017, including socializing it to the Minahasa community, according to the results of coordination on Wednesday 15 November 2017, which took place at the office Disdukcapil Minahasa Regency. The following is the A.C-KWK data submitted to the Minahasa Regency Disdukcapil totaling 27,852 voters with the following details:

**D. AC-KWK data according to the results of DPS determination.**

Laki-Laki
Perempuan



The data referred to above has been verified by the Disdukcapil of Minahasa Regency, with the result that of the 27,829 voters listed in the A.C-KWK, there were only 9,284 registered voters and 18,545 voters who were not recorded in the Minahasa Regency population database. The number of voters recorded in the Minahasa Regency population database as well as data from the Minahasa Regency Disdukcapil has been followed up in a plenary meeting of discussion and determination of the Minahasa Regency DPSHP which is carried out in stages.

The Open Plenary Meeting for the Recapitulation of the Corrected Temporary Voter List (DPSHP) and the determination of the DPT was closed on Saturday, April 21, 2018, with the result that the Minahasa Regency DPT was set at 251,140 voters consisting of 126,714 male voters and 124,426 female voters spread across the country. 578 TPS in 270 villages/kelurahan.

**Conclusion**

From the results of the research carried out it can be concluded that: 1). The technical guidance received by PPS and KPPS is just a matter of election procedures. Submission of other information for voters is still carried out directly by the KPU and in its implementation, it is not too optimal and not yet accountable, where the limitations of KPU members are not good in quantity. 2). There is no complete trust given by KPU to PPS and KPPS in disseminating the stages of election and other important information related to the Election of Regional Heads. 3). PPS in Kelurahan only receive instructions from the KPU and all of the socialization processes are carried out by the KPU.

The socialization of the procedures for the election of regional heads to the community in Kelurahan-Kelurahan carried out by the KPU was carried out during

mourning worship activities and community organization events (arisan).

## References

- Agung, Mulyo. (2020). The Effect of Financial Reporting Quality on Regional Governments' Performance Accountability. *KnE Social Sciences*, 694–701. [Google Scholar](#)
- AMANDE, Yuantoni Fidelico Brucel. (2018). *Problematika Pemberhentian Antar Waktu (Paw) Anggota Dprd Kabupaten/Kota Dalam Undang-Undang Nomor 17 Tahun 2014 Tentang MPR, DPR, DPD & DPRD*. [Google Scholar](#)
- Astuti, Murti, Prawoto, Pratikto, Irawan, Yudy Surya, Sugiono, Sugiono, & Saleh, S. M. (2019). The Role of the University in the Implementation of Eco-Innovation at the Creative Industry Center of Natural Stone Crafts. *International Journal of Integrated Engineering*, 11(5), 58–65. [Google Scholar](#)
- Chhotray, Vasudha, & Stoker, Gerry. (2009). Governance and International Relations. In *Governance Theory and Practice* (pp. 76–96). Springer. [Google Scholar](#)
- Fernando, Niroshinie, Loke, Seng W., & Rahayu, Wenny. (2011). Dynamic mobile cloud computing: Ad hoc and opportunistic job sharing. *2011 Fourth IEEE International Conference on Utility and Cloud Computing*, 281–286. IEEE. [Google Scholar](#)
- Gústavsdóttir, Gerður. (n.d.). *Þjónusta við börn og ungmenni á þjónustumiðstöð. Sampætting þjónustu*. [Google Scholar](#)
- Nengsih, Neng Suryanti. (2019). Integritas KPU dan Pemilihan Umum. *JURNAL ILMU SOSIAL DAN ILMU POLITIK*, 1(1), 51–61. [Google Scholar](#)
- Raba, Manggaukang. (2006). *Akuntabilitas konsep dan Implementasi* (Vol. 1). UMMPress. [Google Scholar](#)
- Sayuti, Achmad, Ulum, Bahrul, & Kusnadi, Dedek. (2018). Netralisasi Komisi Pemilihan Umum (Kpu) Dalam Penyelenggaraan Pemilu Menurut Undang Undang Nomor 7 Tahun 2017. UIN Sulthan Thaha Saifuddin Jambi. [Google Scholar](#)
- Suantara, I. Gede. (2021). Kewenangan Badan Pengawas Pemilu (Bawaslu) Menganulir Peraturan Yang Dibuat Oleh Komisi Pemilihan Umum (Kpu) Dalam Penyelenggaraan Pemilihan Umum. *Privatelaw*, 1(1). [Google Scholar](#)
- Subiakto, Henry. (2015). *Komunikasi politik, media, dan demokrasi*. Prenada Media. [Google Scholar](#)
- Sugiyono, Dr. (2013). *Metode penelitian pendidikan pendekatan kuantitatif, kualitatif dan R&D*. [Google Scholar](#)
- Wiliam, Glant. (2015). Analisa Manajemen dan Resolusi Konflik Agama: Studi Kasus HKBP (Huria Kristen Batak Protestan) Pondok Timur Indah, Kota Bekasi Tahun 2010-2014. Bakrie University. [Google Scholar](#)
- Zalukhu, Nestrorius Nefrans. (2021). Peranan Komisi Pemilihan Umum (Kpu) Dalam Penyelenggaraan Pemilihan Kepala Daerah Untuk Meningkatkan Partisipasi Politik Masyarakat (Studi Kasus Pilkada Wali Kota Medan Tahun 2020). [Google Scholar](#)
- Zeyn, Elvira. (2014). Pengaruh penerapan good governance dan standar akuntansi pemerintahan terhadap akuntabilitas keuangan. *Trikonomika Journal*, 10(1), 52–62. [Google Scholar](#)

---

### Copyright holder:

Agnesia Benedicta C. Tewu, Itje Pangkey, Marthinus Mandagi (2021)

### First publication right:

Journal of Social Science

**This article is licensed under:**

