

# Magnetic resonance imaging and computed tomography of neurocysticercosis

**J Bruna**  
MD, DSc

Department of Diagnostic Radiology  
University of the Free State  
Bloemfontein

## Abstract

The typical radiological appearance of neurocysticercosis (NC) includes: small solitary or multiple non-enhancing lesions, small enhancing nodules, non-enhancing cysts without and at a later stage with perifocal oedema, racemose cysts in the subarachnoid space, cysts with ring enhancement and perifocal oedema, cysts with eccentric scolex (target sign, bull's eye sign) and nodular calcifications. MRI is more sensitive than CT (Figs 1 - 5) in the diagnosis of subarachnoid and ventricular forms of NC. CT is very sensitive in diagnosing cerebral forms and is more sensitive than MRI in the late stage of NC characterised by nodular calcifications. In patients with seizures, neurological deficit and mental deterioration CT remains the imaging method of choice. If the result of CT is negative or dubious MRI has to be considered. On CT small lesions are not visible

especially if investigation is performed only with 10 mm slices.

Neurocysticercosis (NC) may result from ingestion of food contaminated with *Taenia solium* eggs (ova) by the faeco-oral route or rarely by regurgitation (duodeno-gastric reflux) of *Taenia solium* eggs from the intestine into the stomach. The eggs are released from their encasement by gastric acid and 'hatch' in the intestinal mucus, producing oncospheres which are the primary larvae. The larvae penetrate the mucus and are distributed (disseminated) into the skin, muscles, fat tissues, bones and the central nervous system (CNS). Humans are the only known host of both the adult and larval forms of *Taenia solium*. The latter results in cysticercosis and later in taeniasis. NC is endemic in Africa, Asia, Central and South America. As a result of increased travel to the endemic areas and immigration from these countries NC has also been reported in Europe and North America.<sup>9,12,14,22</sup> The role of computed tomography (CT) and magnetic resonance imaging (MRI) are well established in the diagnosis and monitoring of treatment of NC.<sup>1-26</sup> The question remains whether

both methods have the same value, and which of them is preferred. There are also different views on direct and indirect signs and on classification of NC.<sup>6,8,10,12,13,15-17,19,23,26</sup> I would like to summarise our experience with CT and MRI of NC and to mention some differential diagnostic imaging characteristics according to my own experience.

## Material and methods

The images of a randomised group of 110 patients with different stages of NC were re-evaluated. CT investigation was performed mainly by Somatom DR3 without and after intravenous administration of 50 ml non-ionic contrast agent. Thickness of slices was 5 - 10 mm, and steps also 5 - 10 mm. Twenty-two patients were investigated by MRI (Magnetom Impact, 1 Tesla) without and after intravenous Gd-DTPA application (1 mmol/kg). Routine protocols of brain investigation were used: MRI-T1SE sagittal and T2SE axial slices (5 mm), and CT 5 mm slices of the posterior and 10 mm slices of the supratentorial region were used. The main clinical manifestations of NC in our patients are summarised in Table I. We re-evaluated number, size, localisation, density/intensity of lesions as well as indirect signs of NC (hydrocephalus, cerebral infarction, cortical atrophy and mass effect). According to our experience we summarised differential diagnostic signs and our approach in evaluation of NC.

## Results

The radiological findings are summarised in Table II. There were 59 patients (53.6%) with NC suffering from seizure, 35 (31.8%) had neuro-

[www.schering-diagnostics.co.za](http://www.schering-diagnostics.co.za)

SCHERING



Diagnostics

Further information available on request from  
Schering (Pty) Ltd, Reg. no. 1954/009072/01, 5 Orkney Street, Halfway House, 1685. e-mail: [schering@icon.co.za](mailto:schering@icon.co.za)  
11 3287b

Iopromide

**Ultravist<sup>®</sup>**



SCHERING



Diagnostics

Iopromide

**Ultravist<sup>®</sup>**

Further information available on request from  
Schering (Pty) Ltd, Reg. no. 1964/09072/07 • P O Box 5278, Halfway House 1685 • e-mail: [schering@icon.co.za](mailto:schering@icon.co.za) • UI 3393c

Table I. Main clinical signs (no. of patients = 110)

Clinical sign	No. of patients	%
Seizure	59	53.6
Neurological deficit	35	31.8
Mental deterioration	10	9.0
Intracranial hypertension	4	3.6
Headache	2	1.8

Table II. MRI and CT findings (no. of patients = 110)

	No. of patients	%
Cysts only	26	23.6
Nodule only	8	7.2
Cysts + ring enhancement	24	21.8
Calcifications + cysts + ring	31	28.1
Calcifications only	34	30.9
Hydrocephalus + NC signs	12	10.9
Cortical atrophy	9	8.2
Multiple	96	87.3
Diameter of lesions 1 - 10 mm	99	90
Localisation sub-/cortical	77	70
Subarachnoid + ventricular	27	24.5

logical deficit and 10 (9%) had different mental disturbances. The lesions were typically multiple in 96/110 patients (87.3%), with the number of lesions ranging from 2 to 500 in our group. Intracranial cysticercus, in the ganglia, and in the spinal canal was localised mainly subcortically or cortically and supratentorially (Figs 1 - 9). Occasionally NC was localised peri- and paraventricularly, subarachnoidally, intraventricularly (Figs 10 and 11), in the basal ganglia (Figs 12 and 13), and in the spinal canal, spinal cord (Figs 14 - 17), spinal subarachnoid as well as subdural spaces. Localisation simultaneously in different structures and spaces was also found. The diameter of the lesions was usually under 10 mm in 99/110 patients (90%). MRI and CT images

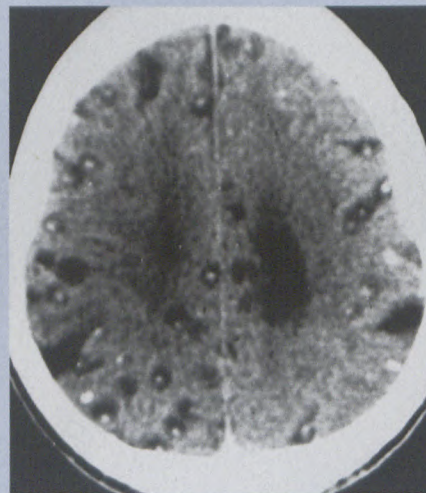


Fig. 1. Post-contrast CT image of multiple cystic lesions with scolices and cortical calcifications. No pathological enhancement. Stages 2 and 5 of NC (TS 18 yrs M).

of NC were usually those of small enhancing nodules, multiple small cysts with eccentric nodule (target or bull's eye sign) and ring enhancement.

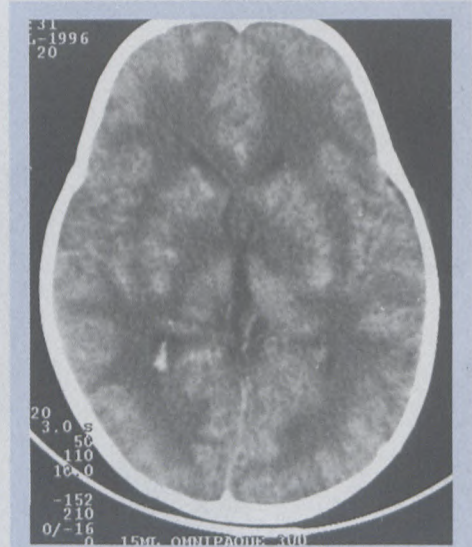


Fig. 2. Post-contrast CT shows non-homogeneous patchy enhancement of the basal ganglia and cortex. Stage 1 of NC (PZ 2 yrs M).

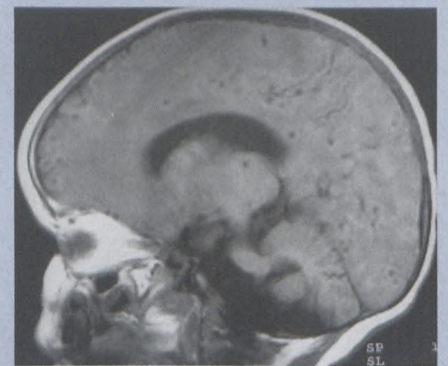


Fig. 3. T1WI shows multiple hypointense lesions with hyperintense surface. (PZ 2 yrs M).

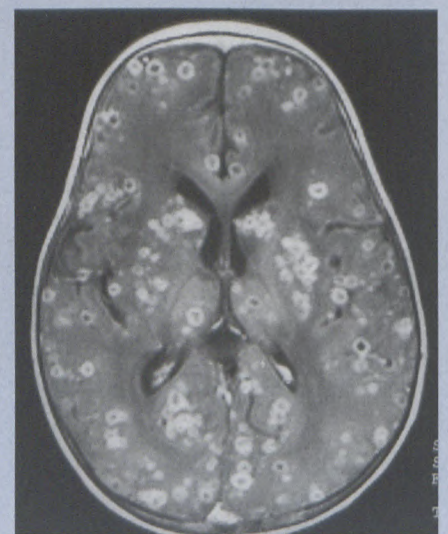


Fig. 4. T1WI post Gd-DTPA demonstrates multiple small enhancing lesions. Localisation of lesions: basal ganglia, thalamus, cortex and subcortex (PZ 2 yrs M).

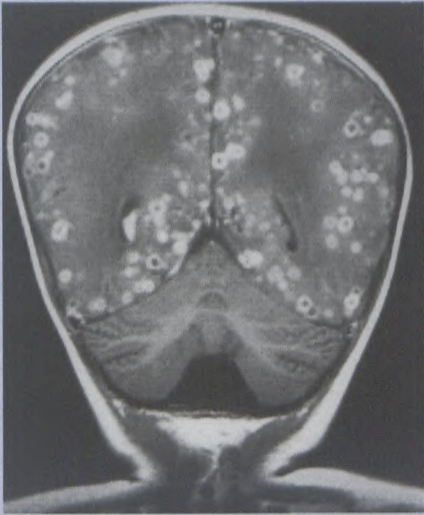


Fig. 5. Coronal T1WI post Gd-DTPA shows multiple enhancing lesions cortically and subcortically. Lesions are solid and some of them cystic stage 1 - 2 of NC (PZ 2 yrs M).

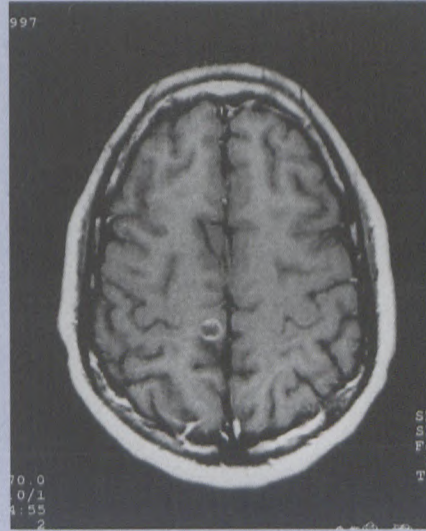


Fig. 7. Axial T1WI post Gd-DTPA shows ring enhancement and perifocal oedema. Stage 3 of NC (MA 19 yrs M).

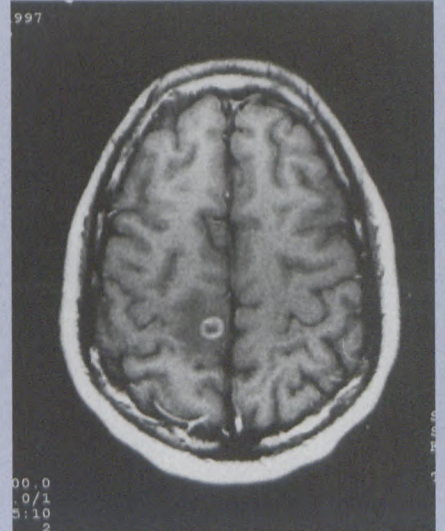


Fig. 9. Axial T1WI post Gd-DTPA shows cortical cystic lesion with ring enhancement. Stage 4 of NC (MA 19 yrs M).

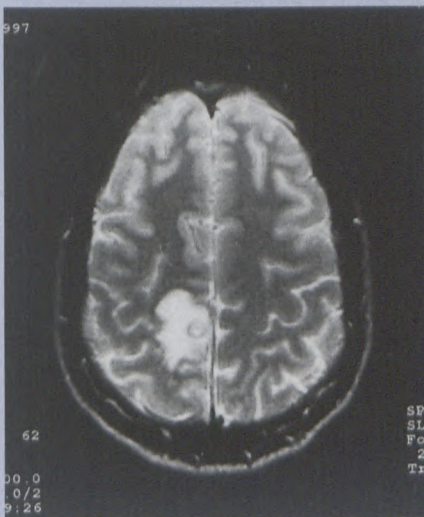


Fig. 6. Axial T2WI shows round hyperintense lesion with hypointense surface and hypointense area inside. Marked perifocal oedema (MA 19 yrs M).

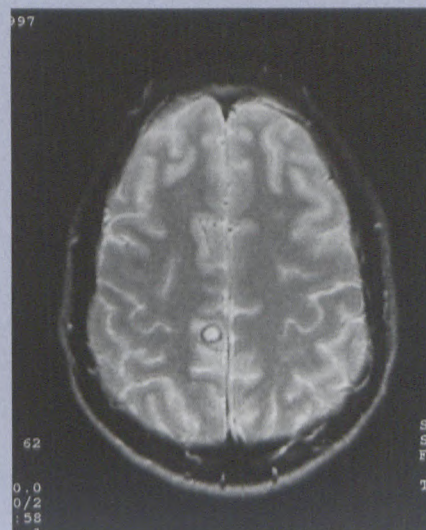


Fig. 8. Axial T2WI six weeks later shows hypointense lesion with hypointense capsule and small central hypointensity (MA 19 yrs M).

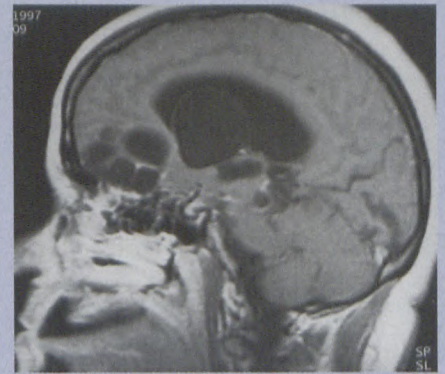


Fig. 10. Sagittal T1WI shows racemose cystic lesions sub-frontally, cystic lesion in frontal lobe and a large cyst in lateral ventricle near foramen of Monro causing obstructive hydrocephalus (RJ 37 yrs F).

Active lesions in the early dying stage had perifocal oedema. Scolices on T1WI were often visible (14/22). Subarachnoid and intracerebral cysts appeared on CT and MRI without an evident intracystic eccentric nodule (scolex). The cyst capsule was iso- or hyperintense on T2WI. Double signal with some sediment was visible in large cysts. The largest intraventricular cyst in our group was 4 cm in diame-

ter, the largest intracerebral cyst 3 cm, and the largest subarachnoid 2 cm. Very small lesions were not visible on CT but only on MRI. Some small calcifications were only visible on CT. Different stages of NC were often visible simultaneously and were better differentiated by MRI (9/22).

## Discussion

The clinical picture of NC varies

from mild headache and neurological deficits to seizures, intracranial hypertension, and coma and death.<sup>4</sup> Most patients with chronic NC presented with seizures and some neurological deficit. The acute stage (dissemination) as well as the vesicular stage are usually not diagnosed correctly because the accompanying symptoms are often only flu-like.<sup>15,16</sup> Seizures are presenting symptoms of brain and meningeal lesions usually in advanced stage of the disease. Single brain lesions follow a relatively benign

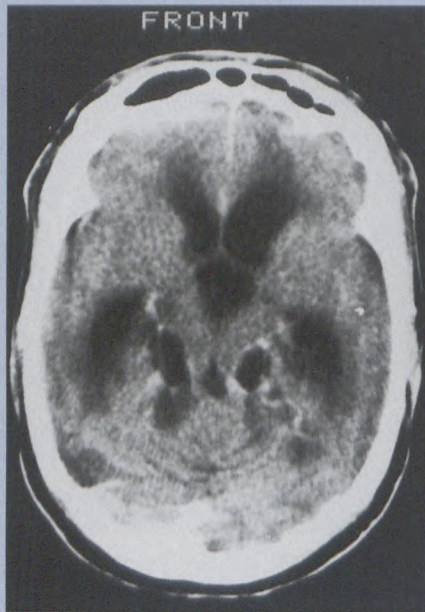


Fig. 11. Post-contrast CT shows an obstructive hydrocephalus and cystic lesion parasagittally and subarachnoidally (FN 33 yrs M).

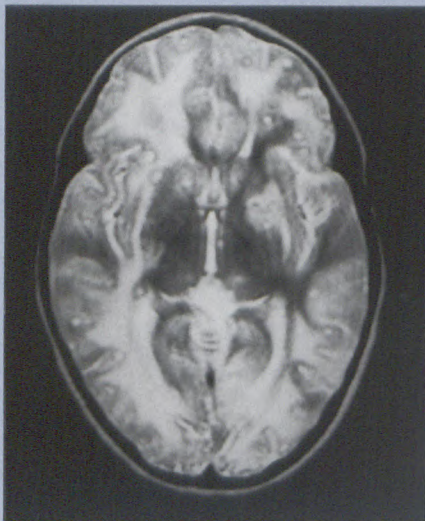


Fig. 12. Axial T2WI shows round small hyperintense lesions cortically, in basal ganglia and prominent white matter oedema which can correspond to leucoencephalitis (RM 8 yrs F).

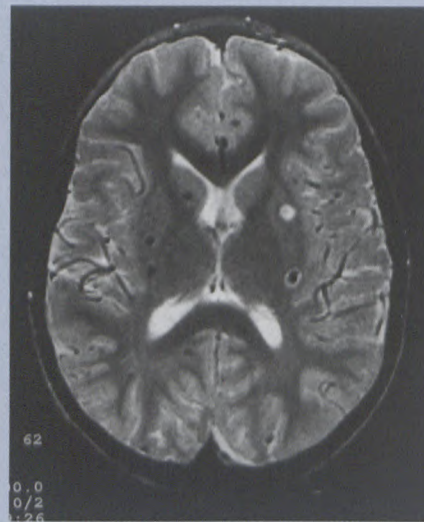
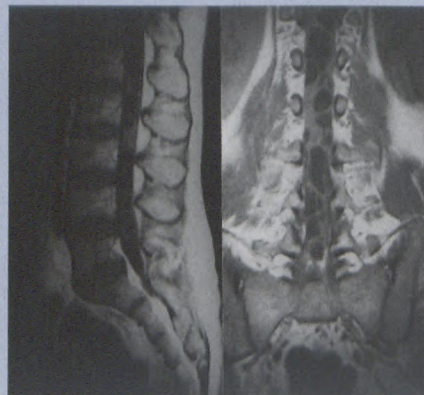


Fig. 13. Axial T2WI shows multiple hypointense lesions cortically and in basal ganglia. Some lesions have hyperintense surface due to perifocal oedema - different stage of granuloma maturity (PJS 7 yrs M).



Figs 14 and 15. Sagittal and coronal T1WI show irregular round hypointense lesions involving subarachnoid space (JM 40 yrs M).

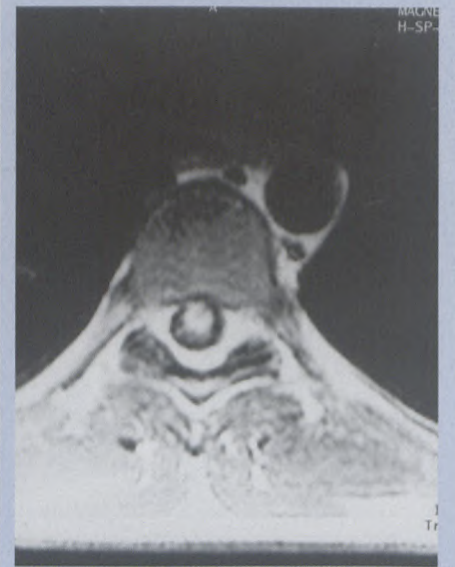


Fig. 16. Axial T1WI post Gd-DTPA shows large enhancing lesion localised in the intramedullary (PJ 25 yrs M).

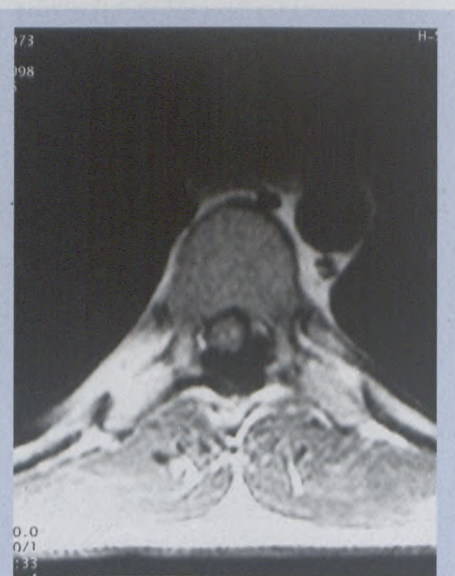


Fig. 17. Axial T1WI post GD-DTPA shows two small enhancing lesions of the spinal cord and large cystic extramedullary mass localised dorsally and proved subdurally (PJ 25 yrs M).

course.<sup>4</sup> Cerebrovascular ischaemic changes and lacunar infarcts in areas supplied by lenticulostriate arteries due to vasculitis have been reported.<sup>3,5,10</sup> According to our experience the basal ganglia infarction is typical for neurotuberculosis. NC is classified into parenchymal, ventricular, meningeal, spinal and mixed forms.<sup>4,15</sup>

According to our study and literature data the parenchymal form is the most common. We can confirm that the radiological signs varied from focal non-enhancing areas of oedema, homogeneously enhancing lesions, non-enhancing cysts without and later with perifocal oedema, cysts with ring enhancement without and later with oedema and eventually calcifications.<sup>10,15,26</sup> The indirect radiological signs of NC are hydrocephalus, cortical atrophy and rarely cerebral infarction or mass effect.<sup>16</sup> The mass effect

was only significant in all cases of spinal canal involvement. A typical imaging sign of NC is a cyst with an eccentric hyperdense small lesion localised inside on the wall of the cyst, which corresponds to scolex. This is not correctly called a target or bull's eye sign. With regard to classification, the first stage of NC is acute phase tis-

sue invasion according to Kramer *et al.*<sup>15</sup> The first stage is well tolerated. The next vesicular stage with non-enhancing cysts starts in the chronic phase and is well tolerated, too. Clinical problems start when viable larvae in the cyst die. This first stage of degeneration or dying of the NC is characterised by marked perifocal inflammatory reaction; on both CT and MRI it presents as cysts with ring enhancement. With a dead larva the fluid in the cyst becomes turbid (colloid vesicular stage). On CT the cystic lesion has higher density and on MRI T2W it is hyperintense with a lower intensity ring. In the subsequent granulo-nodular stage the cyst shrinks, the cyst membrane becomes thicker and scolex calcifies. On both CT and MRI the dead cyst is isodense/isointense with brain tissue but on MRI there may be fine ring enhancement or rim hyperintensity representing residual perifocal inflammation with oedema.<sup>17,24</sup> The final stage is nodular or residual calcification. According to references and also to our experience, MRI is more sensitive than CT in diagnosing perifocal oedema and in differentiating subarachnoid NC from subarachnoid cysts.<sup>12,13,17,18</sup> The cysts are found primarily in the cerebral grey matter and it is difficult to distinguish them from subarachnoid intercortical localisation within sulci. We also confirmed that MRI is more sensitive than CT in diagnosing the subarachnoid and ventricular forms.<sup>1,2,7</sup> A non-calcified scolex is also more easily detected by MRI than by CT.<sup>10,17,19</sup> The intensity of the signal of most parenchymal and intraventricular or meningeal cysts presumed to be viable is similar to that of CSF on both T1 and T2-weighted images. The cysts presumably degenerated have

Table III. MRI and CT images and morphology of NC

Acute phase	Invasion	Small non-enhancing lesion or Small enhancing lesion with oedema	Stage 1
Chronic phase	Vesicular	Non-enhancing cyst with scolex or Cyst with ring enhancement	Stage 2
	Colloidal	Cyst with ring enhancement + oedema (white target on T1WI)	Stage 3
	Granular	Shrunk enhancing cyst with calcified scolex	Stage 4
	Nodular calcified	Calcified nodule 1 - 6 mm in diameter	Stage 5

increased signal intensity on T1WI, probably because of increased protein content.<sup>24</sup> Perifocal (pericystic) high signal intensity on both proton and T2WI is a sign of the dying phase and represents inflammatory reaction caused initially by oedema and later by gliosis. Sensitivity of CT in diagnosis of NC is usually lower because of thicker slices routinely used for brain investigation. Thin slice (2 - 5 mm) CT can be a cost-effective alternative to MRI.<sup>19</sup> CT more easily detects the residual calcification and calcified scolex. More than 60% of our patients with NC already had calcifications by the time of first investigation. CT investigation is therefore the method of choice in patients with seizures or epilepsy of unknown origin with suspected NC. Seizures, neurological deficit and mental disturbances are the main clinical signs of brain involvement.<sup>11,20,22</sup> In the differential diagnosis of NC it is necessary to exclude tuberculosis, toxoplasmosis, abscesses, malignancy and paragonimiasis.<sup>16</sup> All of them may give a slightly similar imaging pattern. The imaging signs, morphology and classification of NC according to the literature<sup>6,15</sup> as well as the main imaging signs are summarised in Table III. The main differential imaging signs of NC and neurotuberculosis, abscess, toxo-

plasmiasis and malignancy are summarised in Table IV.

### Acknowledgements

Acknowledgements to Professors J Albertyn, J F K de Villiers, A J Kruger and Dr F Haven for submission of certain clinical data.

### References

- Barloom TJ, Yuh WT, Chiang FL. Lesions involving the fourth ventricle evaluated by CT and MT. *Magn Reson Imaging* 1989; 7: 635-642.
- Boecher-Scwertz HG, Hey O, Higer HP, Perneczky A. Intracystic cysticercosis mimicking a pituitary adenoma. *Br J Neurosurg* 1991; 5: 405-407.
- Bruna J, de Villiers JFK, Haven F, Albertyn J. Magnetic resonance imaging and computed tomography of neurocysticercosis. *MAGMA* 1998; 6: suppl 1, 185.
- Brutto del OH. Cysticercosis and cerebrovascular disease. *J Neurol Neurosurg Psychiatry* 1992; 55: 252-254.
- Cantu C, Barinagarrementeria F. Cerebrovascular complications of neurocysticercosis. *Arch Neurol* 1996; 53: 233-239.
- Carbajal JR, Palacios E, Azar-kia B, Churchill R. Radiology of cysticercosis of the central nervous system including computed tomography. *Radiology* 1977; 1: 127-131.
- Celis MA, Mourier KL, Polivka M. Cysticercose cisternale de l'angle ponto-cerebelleux. *Neurochirurgie* 1992; 38: 108-112.
- Chang KH, Lee JH, Hann MH, Han MC. The role of contrast-enhanced MRI in the diagnosis of neurocysticercosis. *Am J Neuroradiol* 1991; 12: 509-512.
- Cueter AC, Gracia-Bobadilla J, Guerra LG, Martinez FM, Kairn B. Neurocysticercosis: focus on intraventricular disease. *Clin Infect Dis* 1997; 24: 157-164.
- Dumas JL, Visy JM, Belin C, *et al.* Parenchymal neurocysticercosis: follow-up and staging by MRI. *Neuroradiology* 1997; 39: 12-18.
- Escobedo F, Sotelo J, Penagos P, Rodriguez J, del Brutto O. Albendazole therapy for neurocysticercosis, a controlled study with CT and MR. *Acta Leiden* 1989; 57: 247-254.



Table IV. General differential imaging characteristics of NC

	NC	TB	Abscess	Toxoplasmosis	TU-METS
Number of lesions	> 10	< 10	1 - 3	5 - 10	1 - Multi
Size (mm)	< 10	> 10	> 10	> 10	> 10
Localisation	Cortical	White matter	WM	WM	WM
Multiloculation	Occasional	Occasional	Occasional	No	Occasional
Ring enhancement	Yes	Yes	Thick	Yes	Irregular
Density (HU)	1 - 10	20 - 30	15 - 20	20 - 30	Hyper
T2WI	Hyper	Hypo	Hyper	Hyper	Hyper
Surface of lesion	Round	Round	Round	Irregular	Round/irregular
Calcifications	Stage 4 - 5	Healed	No	Healed	Occasional

HU = Hounsfield unit.

12. Ginier BL, Poirier VC. MRI of intraventricular cysticercosis. *Am J Neuroradiol* 1992; **13**: 1247-1248.
13. Gulati P, Jena A, Tripathi RP, Gupta AK. MRI in childhood epilepsy. *Indian J Pediatr* 1991; **28**: 761-765.
14. Hansen NJD, Hagelskjaer LH, Christensen T. Neurocysticercosis. *Scand J Infect Dis* 1992; **24**: 255-262.
15. Kramer LD, Locke GE, Byrd SE, Daryabagi J. Cerebral cysticercosis. *Radiology* 1989; **171**: 459-469.
16. Michael AS, Levy JM, Paige ML. Cysticercosis mimicking brain neoplasm. *J Comput Assist Tomogr* 1990; **14**: 708-711.
17. Palacios E, Lujambio PS, Jasso RR. Computed tomography and magnetic resonance imaging of neurocysticercosis (Review). *Semin Roentgenol* 1997; **4**: 325-334.
18. Puri V, Gupta RK. MRI evaluation of focal computed tomography abnormality in epilepsy. *Epilepsia* 1991; **32**: 460-466.
19. Rajshekhar V, Chandy MJ. Comparative study of CT and MRI in patients with seizures and a solitary cerebral cysticercus granuloma. *Neuroradiology* 1996; **38**: 542-546.
20. Robles C, Sedano AM, Vargas-Tentori N, Galindo-Vigen S. Long term results of praziquantel therapy in neurocysticercosis. *J Neurosurg* 1987; **66**: 359-363.
21. Rosenfeld EA, Byrd SE, Shulman ST. Neurocysticercosis among children in Chicago. *Clin Infect Dis* 1996; **23**: 262-268.
22. Shriqui CL, Milette PC. You drive me crazy: Acute psychosis and neurocysticercosis. *Can J Psychiatry* 1992; **37**: 120-124.
23. Sotelo J, Marin C. Hydrocephalus secondary to cysticercosis arachnoiditis. *J Neurosurg* 1987; **66**: 686-689.
24. Teilbaum GP, Otto RJ, Lin M, et al. MR imaging of neurocysticercosis. *Am J Roentgenol* 1989; **153**: 857-866.
25. Ter Pennig B, Litchman CD, Heier L. Bilateral middle cerebral artery occlusions in neurocysticercosis. *Stroke* 1992; **23**: 280-283.
26. Zee C, Segall HD, et al. Magnetic resonance imaging of neurocysticercosis. *J Comput Assist Tomogr* 1988; **12**: 927-934.